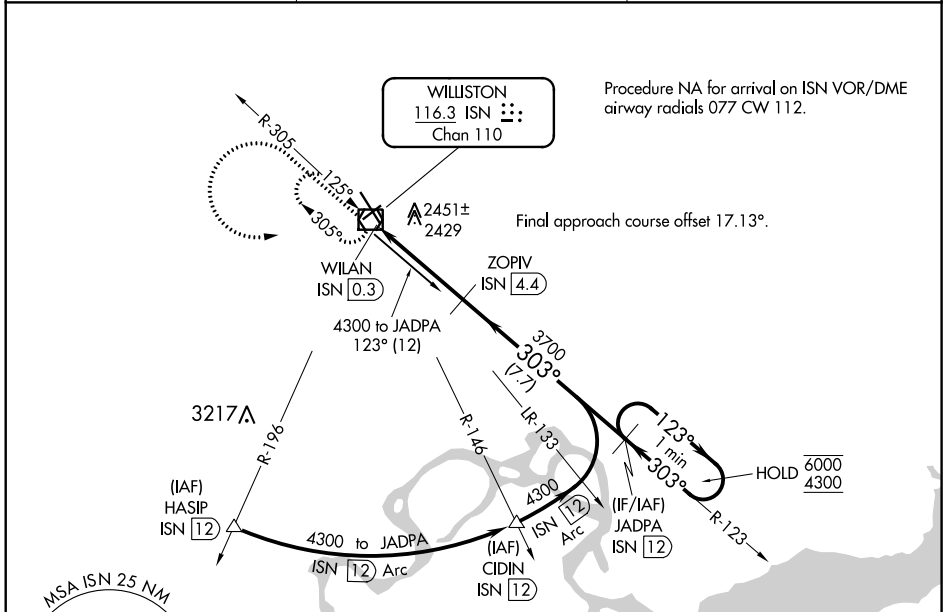


VOR/DME ISN 116.3 Chan 110	APP CRS 303°	Rwy Idg TDZE Apt Elev	7501 2350 2353
--	------------------------	-----------------------------	---

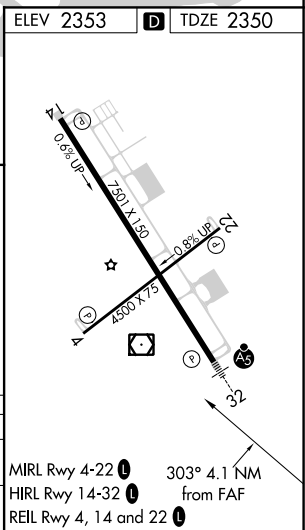
VOR RWY 32
WILLISTON BASIN INTL (XWA)

DME required.	MALSR	MISSED APPROACH: Climb to 4300 then climbing left turn to 4300 direct ISN VOR/DME and hold
For inop ALS, increase S-32 Cats C/D visibility to 1 1/8 SM. -36°C		

ASOS 125.925	SALT LAKE CITY CENTER 126.85 305.2	UNICOM 122.8 (CTAF) 0
------------------------	--	---------------------------------



ELEV 2353	TDZE 2350
4300 4300 ISN	JADPA ISN 12 One Minute Holding Pattern ZOPIV ISN 4.4 WILAN ISN 0.3 ISN 1.3 3.01° TCH 50 3700 123° → 6000 ← 303° 4300 1.1 NM 3 NM 7.7 NM
CATEGORY	A B C D
S-32	2740-1/2 390 (400-1/2) 2740-3/4 390 (400-3/4)
CIRCLING	2760-1 2820-1 2820-1 1/2 2920-2 407 (500-1) 467 (500-1) 467 (500-1 1/2) 567 (600-2)



NC-1, 02 DEC 2021 to 30 DEC 2021

NC-1, 02 DEC 2021 to 30 DEC 2021