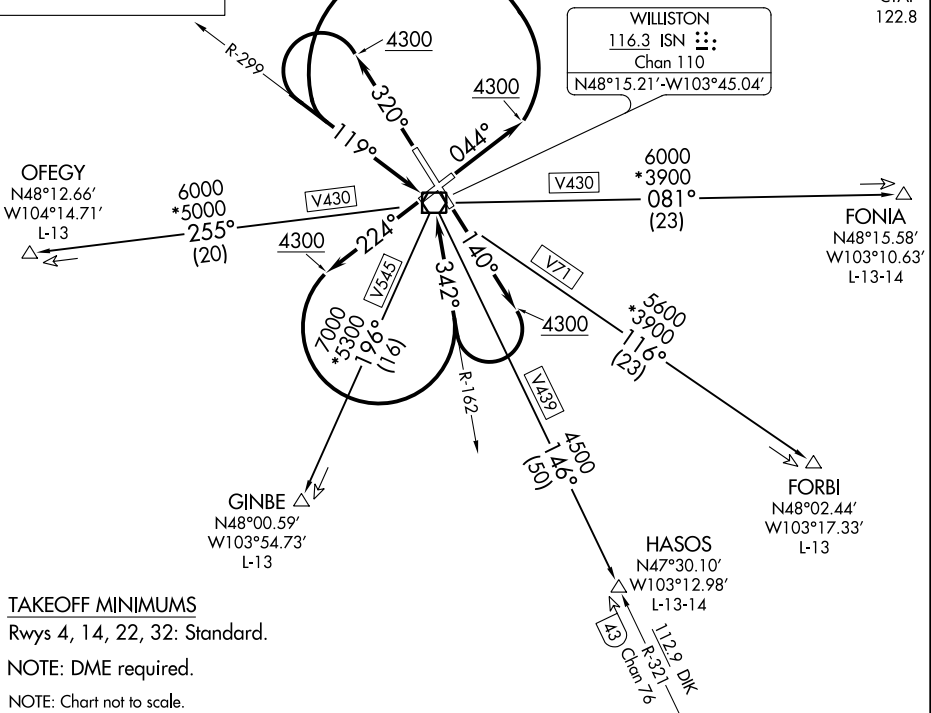


**TOP ALTITUDE:  
ASSIGNED BY ATC**

SALT LAKE CENTER  
126.85 305.2  
CTAF  
122.8



**TAKEOFF MINIMUMS**

Rwys 4, 14, 22, 32: Standard.

NOTE: DME required.

NOTE: Chart not to scale.

**DEPARTURE ROUTE DESCRIPTION**

- TAKEOFF RUNWAY 4:** Climb on heading 044° to 4300 then climbing left turn to intercept ISN VOR/DME R-299 to ISN VOR/DME, thence. . . .
- TAKEOFF RUNWAY 14:** Climb on heading 140° to 4300 then climbing right turn to intercept ISN VOR/DME R-162 to ISN VOR/DME, thence. . . .
- TAKEOFF RUNWAY 22:** Climb on heading 224° to 4300 then climbing left turn to intercept ISN VOR/DME R-162 to ISN VOR/DME, thence. . . .
- TAKEOFF RUNWAY 32:** Climb on heading 320° to 4300 then climbing left turn to intercept ISN VOR/DME R-299 to ISN VOR/DME, thence. . . .

. . . .on (transition). Maintain ATC assigned altitude. Expect filed altitude 10 minutes after departure.

- FONIA TRANSITION (ISN6.FONIA):** From over ISN VOR/DME on ISN R-081 to FONIA.
- FORBI TRANSITION (ISN6.FORBI):** From over ISN VOR/DME on ISN R-116 to FORBI.
- GINBE TRANSITION (ISN6.GINBE):** From over ISN VOR/DME on ISN R-196 to GINBE.
- HASOS TRANSITION (ISN6.HASOS):** From over ISN VOR/DME on ISN R-146 and DIK R-321 to HASOS.
- OFEGY TRANSITION (ISN6.OFEGY):** From over ISN VOR/DME on ISN R-255 to OFEGY.

NC-1, 02 DEC 2021 to 30 DEC 2021

NC-1, 02 DEC 2021 to 30 DEC 2021