


LOC I-AGS <b>110.5</b>	APP CRS <b>352°</b>	Rwy Idg <b>8001</b>
		TDZE <b>136</b>
		Apt Elev <b>146</b>

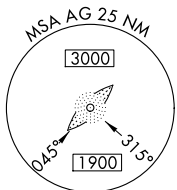
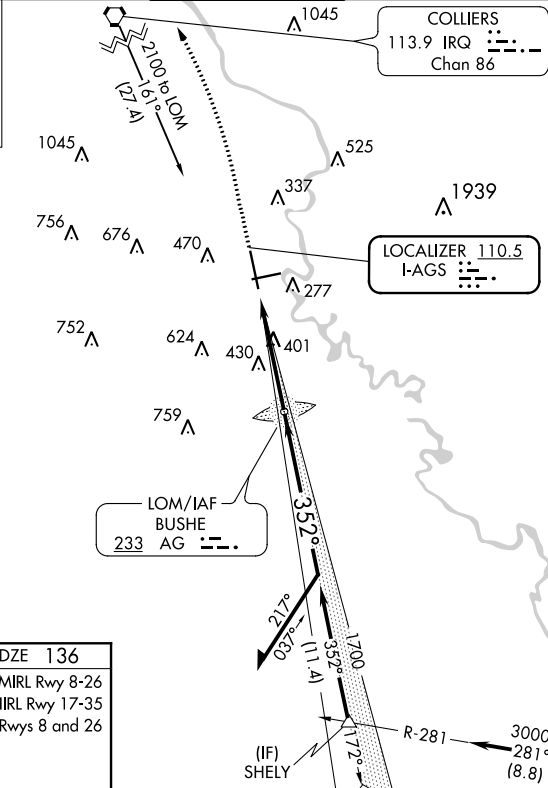
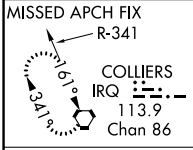
**ILS or LOC RWY 35**  
AUGUSTA RGNL AT BUSH FLD (AGS)

**ASR** When local altimeter setting not received, use Daniel Fld altimeter setting and increase all DA 55 feet and all MDA 60 feet; increase S-LOC 35 and Circling Class C/D visibility 1/4 mile. When Circling Rwy 8 at night, operational VGSI required, remain on or above VGSI glidepath until threshold. Autopilot coupled approach NA below 940.

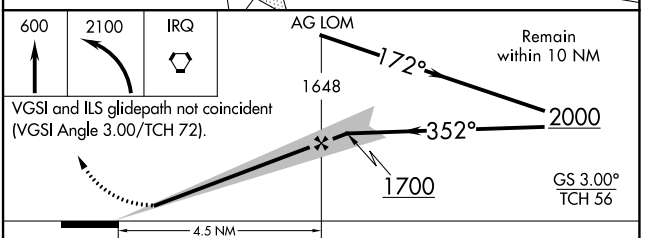
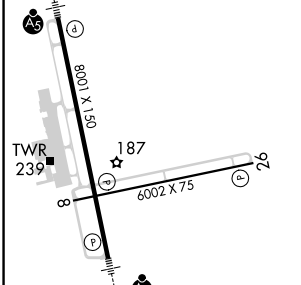
**MALS R** 

**MISSED APPROACH:** Climb to 600 then climbing left turn to 2100 direct IRQ VORTAC and hold.

ATIS <b>132.75</b>	AUGUSTA APP CON ★ <b>126.8 270.3</b>	AUGUSTA TOWER ★ <b>118.7 (CTAF) 0 239.3</b>	GND CON <b>121.9 348.6</b>	CLNC DEL <b>118.65</b>	UNICOM <b>122.95</b>
-----------------------	---	--	-------------------------------	---------------------------	-------------------------



ELEV 146	TDZE 136
MIRL Rwy 8-26	
HIRL Rwy 17-35	
REIL Rwy 8 and 26	



FAF to MAP 4.5 NM					
Knots	60	90	120	150	180
Min:Sec	4:30	3:00	2:15	1:48	1:30
CATEGORY	A	B	C	D	
S-ILS 35	336/24		200 (200-1/2)		
S-LOC 35	660/24	524 (600-1/2)	660/55	524 (600-1)	
CIRCLING	780-1	634 (700-1)	780-1 3/4 634 (700-1 1/4)	900-2 1/2	754 (800-2 1/2)

SE-4, 30 DEC 2021 to 27 JAN 2022

SE-4, 30 DEC 2021 to 27 JAN 2022