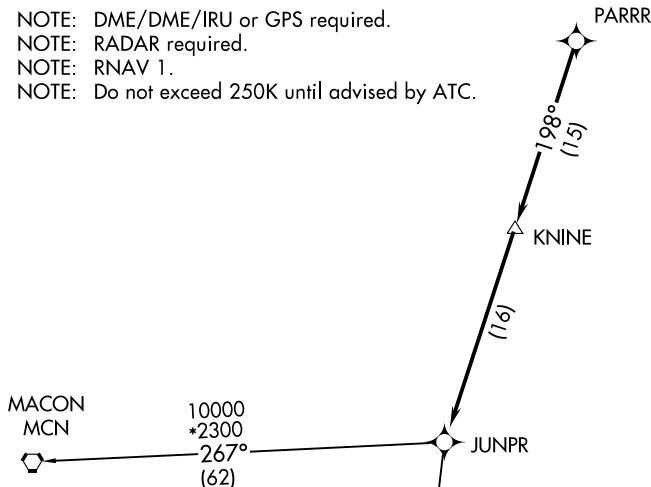


# JUNPR FIVE DEPARTURE (RNAV)

**TOP ALTITUDE:  
ASSIGNED BY ATC**

AUGUSTA DEP CON ★  
126.8 270.3  
CLNC DEL  
118.65  
AUGUSTA TOWER ★  
118.7 (CTAF) 239.3

- NOTE: DME/DME/IRU or GPS required.
- NOTE: RADAR required.
- NOTE: RNAV 1.
- NOTE: Do not exceed 250K until advised by ATC.



SE-4, 30 DEC 2021 to 27 JAN 2022

SE-4, 30 DEC 2021 to 27 JAN 2022

### TAKEOFF MINIMUMS

- Rwy 8: Standard with minimum climb of 394' per NM to 2500.
- Rwy 17: Standard with minimum climb of 265' per NM to 2400.
- Rwy 26: 300-1¾ or standard with minimum climb of 312' per NM to 2000.
- Rwy 35: Standard with minimum climb of 302' per NM to 2500.

**▼ DEPARTURE ROUTE DESCRIPTION**

TAKEOFF RUNWAYS 8, 17, 26, 35:  
Climb heading assigned by ATC for vectors to PARRR, then on depicted route to JUNPR, thence. . . .

. . . .maintain altitude assigned by ATC.  
Expect clearance to filed altitude/flight level within 10 minutes after departure.

ALMA TRANSITION (JUNPR5.AMG)  
MACON TRANSITION (JUNPR5.MCN)

NOTE: Chart not to scale.

# JUNPR FIVE DEPARTURE (RNAV)