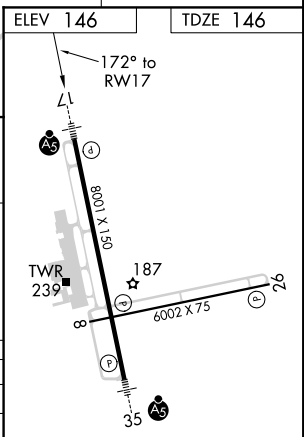
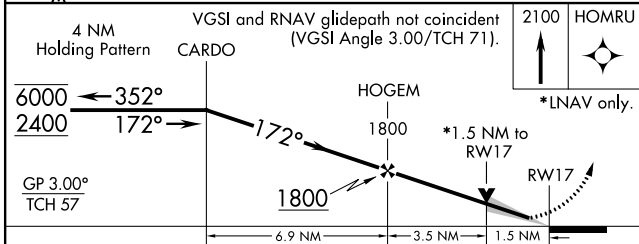
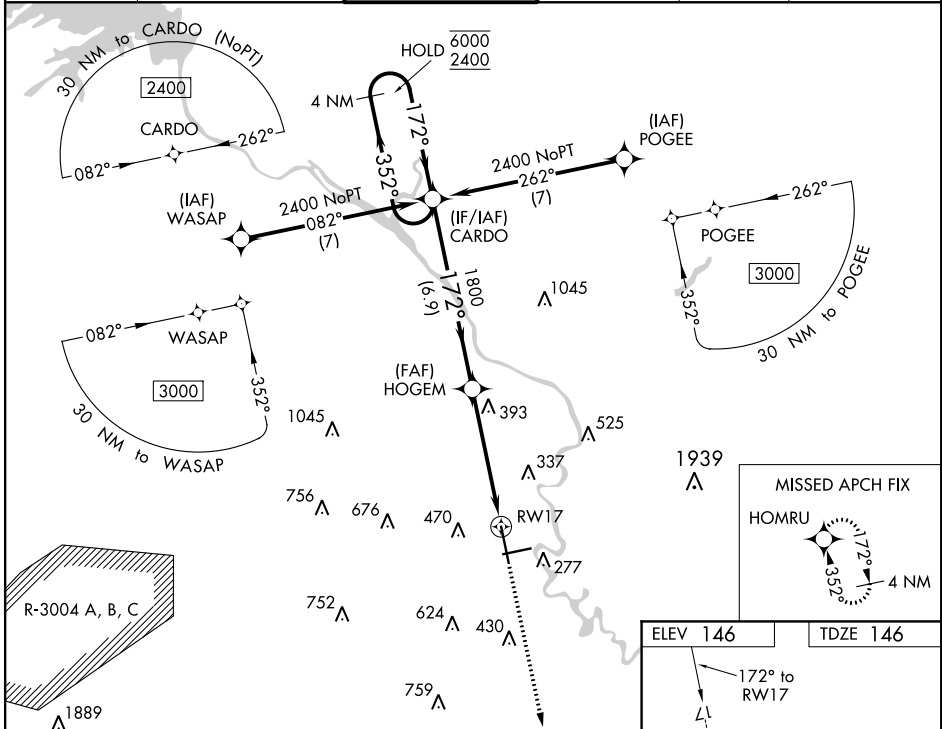


WAAS CH <b>77504</b> <b>W17A</b>	APP CRS <b>172°</b>	Rwy Idg TDZE <b>146</b> Apt Elev <b>146</b>	<b>8001</b>
--	------------------------	---	-------------

# RNAV (GPS) RWY 17

AUGUSTA RGNL AT BUSH FLD (AGS)

RNP APCH.		<p>▼ For uncompensated Baro-VNAV systems, LNAV/VNAV NA below -7°C or above 54°C.                  ▲ For inop ALS, increase LNAV/VNAV all Cats visibility to RVR 4500.</p>		MALSR  MISSED APPROACH: Climb to 2100 direct HOMRU and hold.	
ATIS <b>132.75</b>	AUGUSTA APP CON ★ <b>126.8 270.3</b>	AUGUSTA TOWER ★ <b>118.7 (CTAF) 0 239.3</b>	GND CON <b>121.9 348.6</b>	CLNC DEL <b>118.65</b>	UNICOM <b>122.95</b>



CATEGORY	A	B	C	D
LPV DA		351/24	205 (300-½)	
LNAV/VNAV DA		460/24	314 (400-½)	
LNAV MDA	700/24	554 (600-½)	700/60	554 (600-1¼)
CIRCLING	780-1	634 (700-1)	780-1¾ 634 (700-1¾)	920-2½ 774 (800-2½)

SE-4, 30 DEC 2021 to 27 JAN 2022

SE-4, 30 DEC 2021 to 27 JAN 2022