

WAAS CH 61040 W12B	APP CRS 121°	Rwy Idg TDZE 7700 488 Apt Elev 510
--	------------------------	--

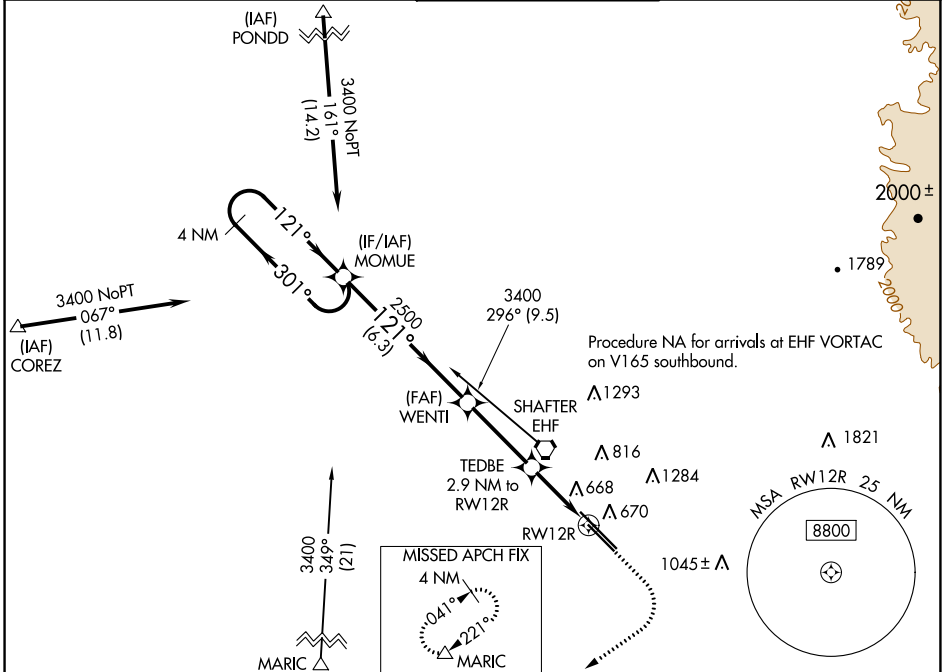
RNAV (GPS) RWY 12R

MEADOWS FLD (BFL)

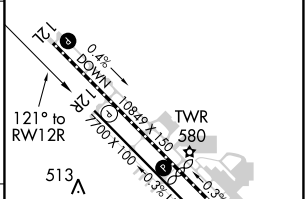
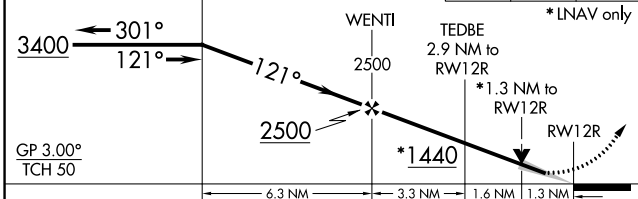
▽ For uncompensated Baro-VNAV systems, LNAV/VNAV NA below -1°C (31°F) or above 54°C (130°F). Circling NA northeast of Rwy 12L-30R. DME/DME RNP-0.3 NA.

MISSED APPROACH: Climb to 1000 then climbing right turn to 3500 direct MARIC and hold.

ATIS 118.6	BAKERSFIELD APP CON ★ 118.8 284.625 (SOUTH) 118.9 270.3 (NORTH)	BAKERSFIELD TOWER ★ 118.1 (CTAF) 0 257.8	GND CON 121.7	UNICOM 122.95
----------------------	---	---	-------------------------	-------------------------



VGSI and RNAV glidepath not coincident (VGSI Angle 3.00/TCH 25).	1000	3500	MARIC	ELEV 510	TDZE 488
--	------	------	-------	----------	----------



CATEGORY	A	B	C	D
LPV DA		738-3/4	250 (300-3/4)	
LNAV/VNAV DA		969-15/8	481 (500-15/8)	
LNAV MDA	920-1	432 (500-1)	920-1 1/4	432 (500-1 1/4)
C CIRCLING	960-1	450 (500-1)	960-1 1/2	1060-2
			450 (500-1 1/2)	550 (600-2)

TDZ/CL Rwy 30R
HIRL Rwy 12L-30R **0**
MIRL Rwy 12R-30L **0**

SW-3, 30 DEC 2021 to 27 JAN 2022

SW-3, 30 DEC 2021 to 27 JAN 2022