

WAAS CH 93739 W18A	APP CRS 179°	Rwy Idg 5810 TDZE 20 Apt Elev 22
--	------------------------	---

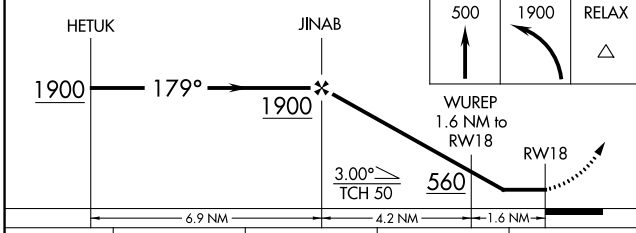
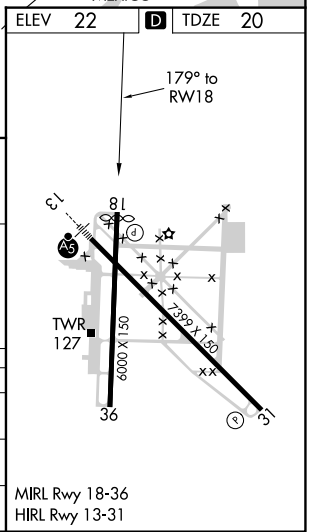
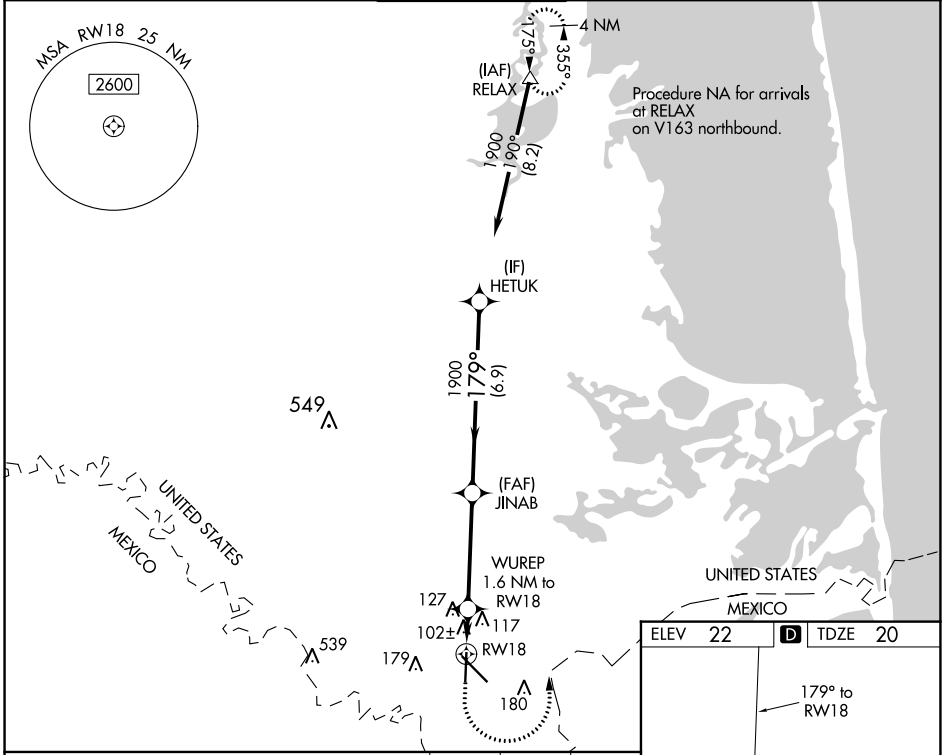
RNAV (GPS) RWY 18

BROWNSVILLE/SOUTH PADRE ISLAND INTL (BRO)

RNP APCH.
RADAR required.
 ⚠ Rwy 18 helicopter visibility reduction below $\frac{3}{4}$ SM NA. When local altimeter not received, use Port Isabel altimeter setting and increase all MDA 40 feet; increase LNAV Cats C and D visibility $\frac{1}{8}$ mile and Circling Cat D $\frac{1}{4}$ mile.

MISSED APPROACH: Climb to 500 then climbing left turn to 1900 direct RELAX and hold.

ATIS 128.55	VALLEY APP CON 119.5 257.6	BROWNSVILLE TOWER ★ 118.9 (CTAF) 239.3	GND CON 121.9	UNICOM 122.95
-----------------------	--------------------------------------	--	-------------------------	-------------------------



CATEGORY	A	B	C	D
LP MDA		360-1	340 (400-1)	
LNAV MDA		380-1	360 (400-1)	
CIRCLING	440-1	540-1	540-1½	680-2
	418 (500-1)	518 (600-1)	518 (600-1½)	658 (700-2)

MIRL Rwy 18-36
HIRL Rwy 13-31

SC-3, 30 DEC 2021 to 27 JAN 2022

SC-3, 30 DEC 2021 to 27 JAN 2022