

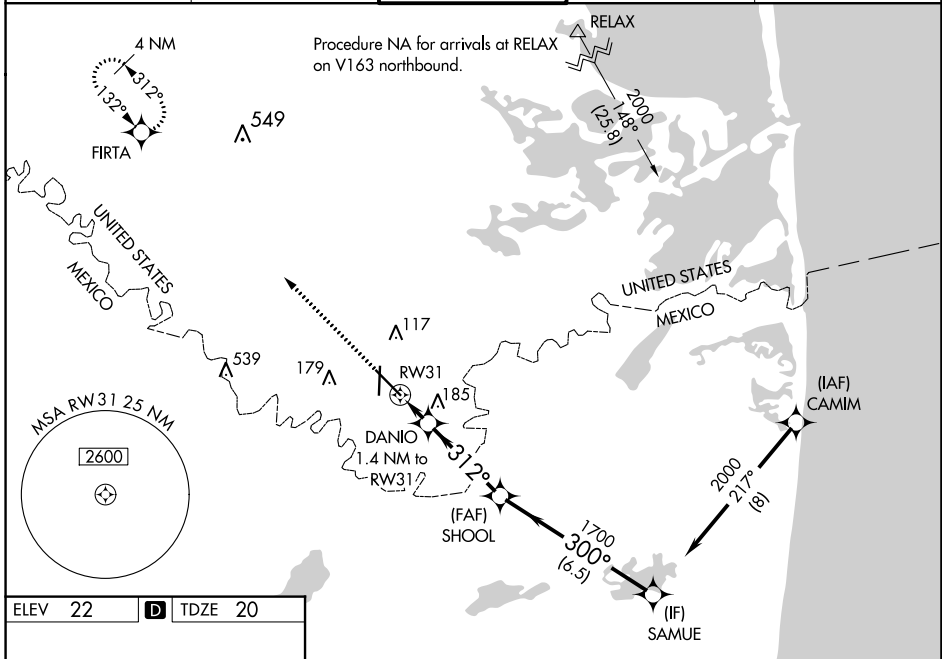
WAAS CH <b>65843</b> <b>W31A</b>	APP CRS <b>312°</b>	Rwy Idg TDZE Apt Elev	<b>7399</b> <b>20</b> <b>22</b>
--	------------------------	-----------------------------	---------------------------------------

# RNAV (GPS) RWY 31

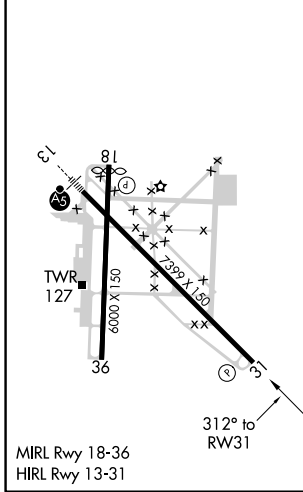
BROWNSVILLE/SOUTH PADRE ISLAND INTL (BRO)

RNP APCH.		MISSED APPROACH: Climb to 2000 direct FIRTA and hold.	
<p><b>⚠</b> Circling Rwy 18 NA at night. Rwy 31 helicopter visibility reduction below 3/4 SM NA. For uncompensated Baro-VNAV systems, LNAV/VNAV NA below 2° C or above 54° C.</p>			

ATIS <b>128.55</b>	VALLEY APP CON <b>119.5 257.6</b>	<b>BROWNSVILLE TOWER*</b> <b>118.9(CTAF) 239.3</b>	GND CON <b>121.9</b>	UNICOM <b>122.95</b>
-----------------------	--------------------------------------	---	-------------------------	-------------------------



ELEV 22	<b>D</b>	TDZE 20
---------	----------	---------



2000	FIRTA	VGSI and RNAV glidepath not coincident (VGSI Angle 3.00/TCH 68).			
		DANIO	SHOOOL	SAMUE	
		1.4 NM to RW31	1700	2000	
*LNAV only.		*0.9 NM to RW31		GP 3.00° TCH 60	
			312°	300°	
			520*	1700	
		0.9	0.5	3.7 NM	6.5 NM
CATEGORY	A	B	C	D	
LPV DA	270-3/4 250 (300-3/4)				
LNAV/VNAV DA	270-3/4 250 (300-3/4)				
LNAV MDA	380-1 360 (400-1)				
<b>C</b> CIRCLING	440-1 418 (500-1)	500-1 478 (500-1)	500-1 1/2 478 (500-1 1/2)	680-2 658 (700-2)	

SC-3, 30 DEC 2021 to 27 JAN 2022

SC-3, 30 DEC 2021 to 27 JAN 2022