

VORTAC BRO 116.3 Chan 110	APP CRS 242°	Rwy Idg TDZE Apt Elev	N/A N/A 22
---	------------------------	-----------------------------	---------------------------------------

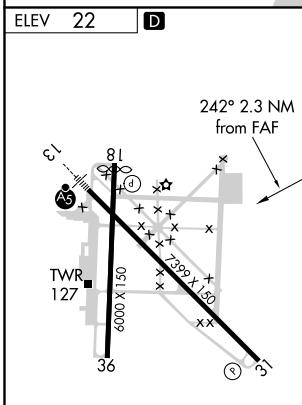
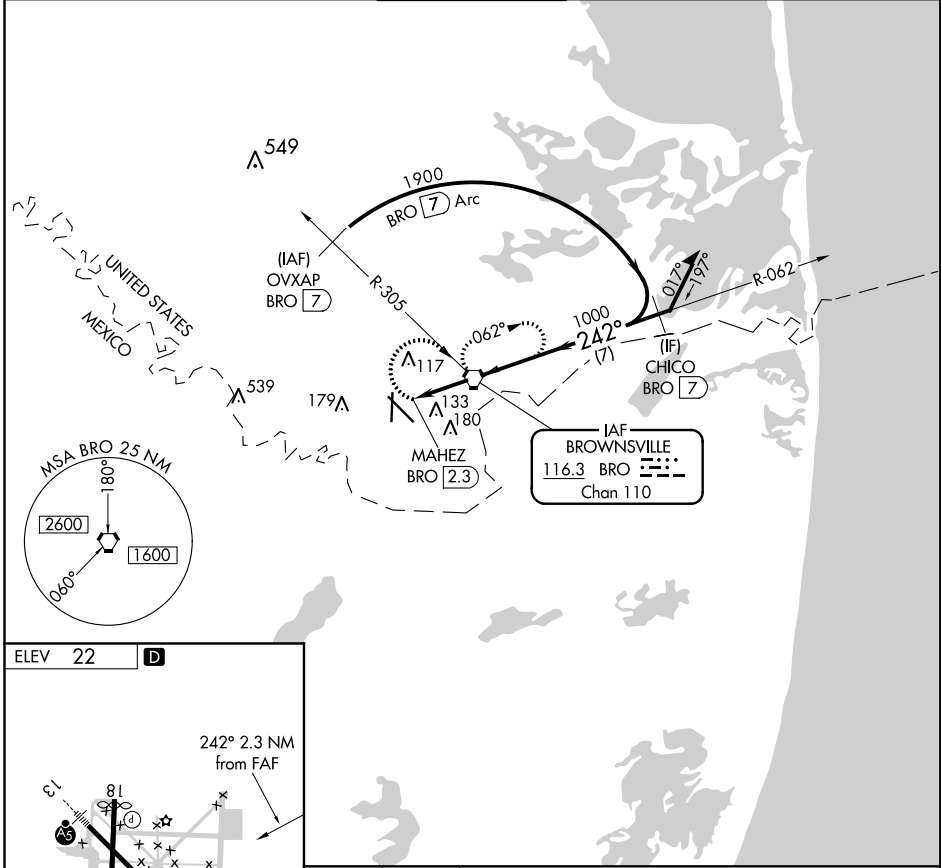
VOR or TACAN-A

BROWNSVILLE/SOUTH PADRE ISLAND INTL (BRO)

▼ When local altimeter not received, use Port Isabel altimeter setting and increase all MDA 40 feet and Circling Cat D visibility ¼ SM.

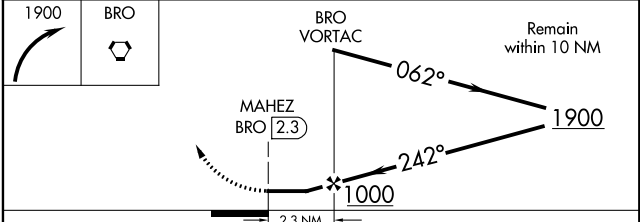
▲ MISSED APPROACH: Climbing right turn to 1900 direct BRO VORTAC and hold. (TACAN aircraft climbing right turn to 1900 on BRO R-062 to CHICO/BRO 7 DME and hold NE, right turn, 242° inbound).

ATIS 128.55	VALLEY APP CON 119.5 257.6	BROWNSVILLE TOWER* 118.9 (CTAF) 239.3	GND CON 121.9	UNICOM 122.95
-----------------------	--------------------------------------	--	-------------------------	-------------------------



FAF to MAP 2.3 NM

Knots	60	90	120	150	180
Min:Sec	2:18	1:32	1:09	0:55	0:46



CATEGORY	A	B	C	D
☑ CIRCLING	440-1 418 (500-1)	540-1 518 (600-1)	540-1½ 518 (600-1½)	680-2 658 (700-2)