

APP CRS 235°	Rwy Idg 7569
	TDZE 726
	Apt Elev 727

RNAV (RNP) Z RWY 23

BUFFALO NIAGARA INTL (BUF)

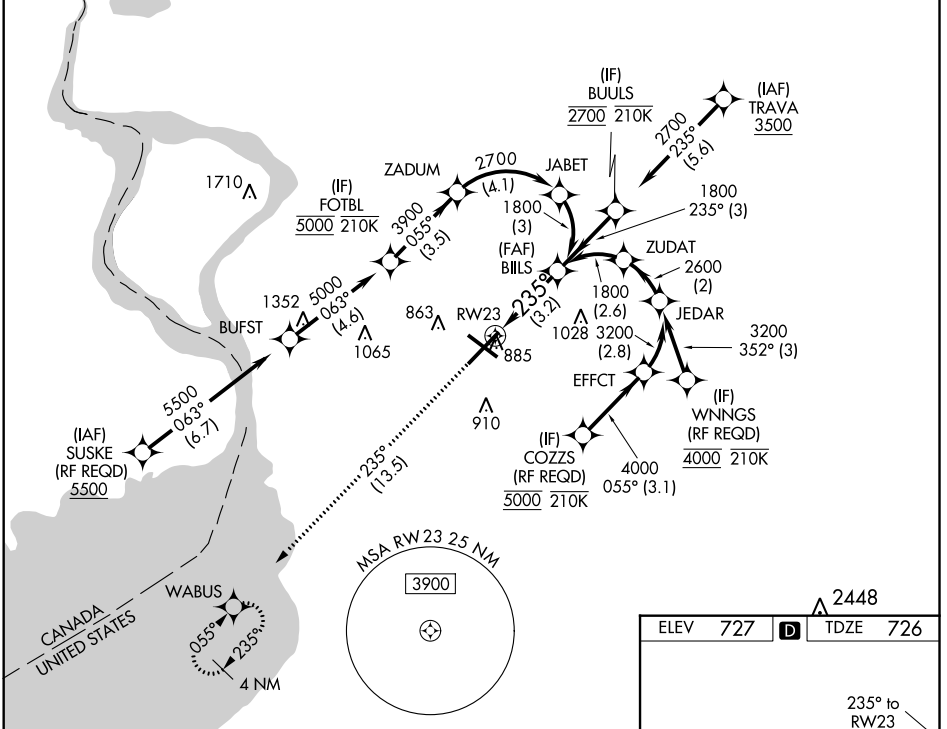
RNP AR APCH.

For uncompensated Baro-VNAV systems, procedure NA below -18°C or above 54°C. For inop ALSF, increase RNP 0.10 all Cats visibility to 1 1/4. For inop ALSF, increase RNP 0.20 all Cats visibility to 1 1/2. For inop ALSF, increase RNP 0.30 all Cats visibility to 1 3/4.

ALSF-2

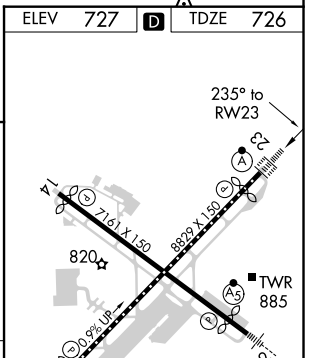
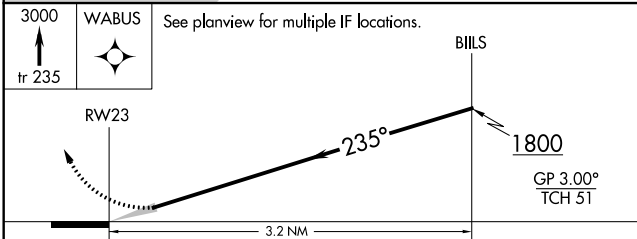
MISSED APPROACH: Climb to 3000 on the RNAV missed approach route to WABUS and hold.

D-ATIS 135.35	BUFFALO APP CON 126.15 263.125	BUFFALO TOWER 120.5 257.8	GND CON 133.2 257.8	CLNC DEL 124.7 257.8	CPDLC
-------------------------	--	-------------------------------------	-------------------------------	--------------------------------	-------



NE-2, 30 DEC 2021 to 27 JAN 2022

NE-2, 30 DEC 2021 to 27 JAN 2022



CATEGORY	A	B	C	D
RNP 0.10 DA		1114/45	388 (400-7%)	
RNP 0.20 DA		1170/55	444 (500-1)	
RNP 0.30 DA		1228-1 1/4	502 (600-1 1/4)	

AUTHORIZATION REQUIRED

REIL Rwy 14
 TDZ/CL Rwys 5 and 23
 HIRL Rwys 5-23 and 14-32