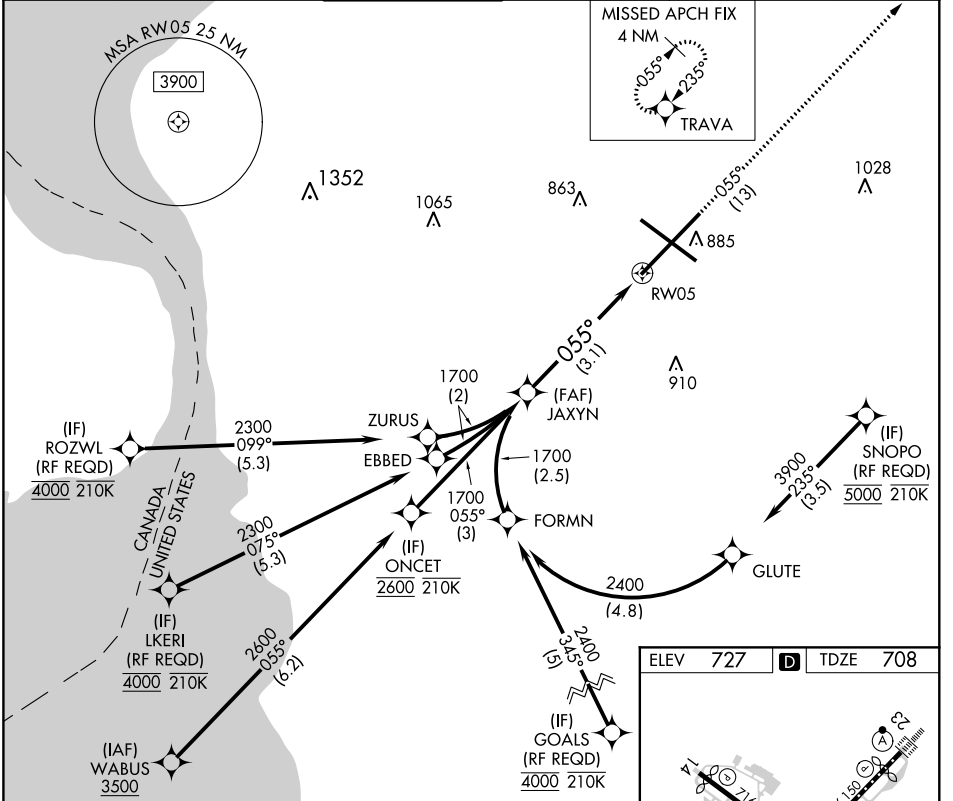


APP CRS	Rwy Idg	<b>7569</b>
<b>055°</b>	TDZE	<b>708</b>
	Apt Elev	<b>727</b>

# RNAV (RNP) Z RWY 5

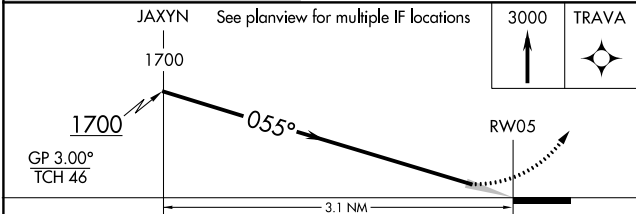
BUFFALO NIAGARA INTL (BUF)

<p><b>▼</b> For uncompensated Baro-VNAV systems, procedure below -18°C (0°F) or above 54°C (130°F), GPS required. For inoperative MALSR, increase RNP 0.10 all Cats visibility to 1¼. For inoperative MALSR, increase RNP 0.30 all Cats visibility to 1½.</p>		<p><b>MALSR</b></p>		<p><b>MISSED APPROACH:</b> Climb to 3000 on the RNAV missed approach route to TRAVA and hold.</p>	
D-ATIS	BUFFALO APP CON	BUFFALO TOWER	GND CON	CLNC DEL	CPDLC
<b>135.35</b>	<b>126.15 263.125</b>	<b>120.5 257.8</b>	<b>133.2 257.8</b>	<b>124.7 257.8</b>	



NE-2, 30 DEC 2021 to 27 JAN 2022

NE-2, 30 DEC 2021 to 27 JAN 2022



ELEV	727	<b>D</b>	TDZE	708
------	-----	----------	------	-----

055° to RW05

REIL Rwy 14  
TDZ/CL Rwys 5 and 23  
HIRL Rwys 5-23 and 14-32

CATEGORY	A	B	C	D
RNP 0.10 DA		1065/45	357 (400-¾)	
RNP 0.30 DA		1159/60	451 (500-1¼)	

**AUTHORIZATION REQUIRED**