

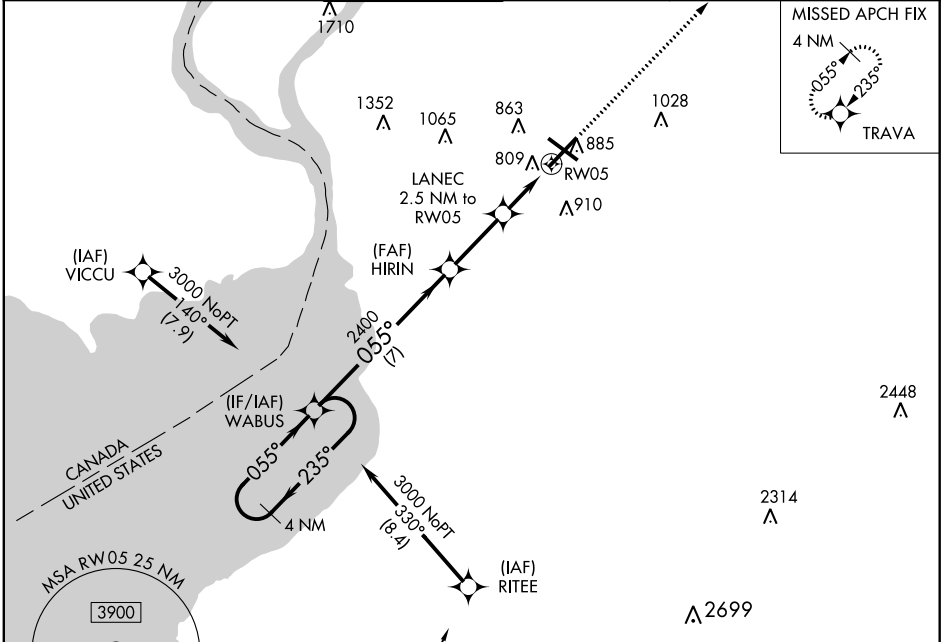
WAAS CH 70311 W05A	APP CRS 055°	Rwy Idg TDZE Apt Elev	7569 708 727
--	------------------------	-----------------------------	---

RNAV (GPS) Y RWY 5

BUFFALO NIAGARA INTL (BUF)

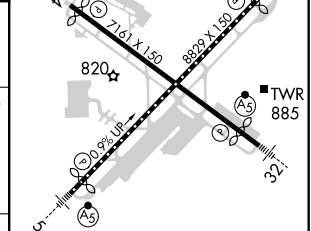
RNP APCH - GPS	MALSRL	MISSED APPROACH: Climb to 3000 direct TRAVA and hold.
For uncompensated Baro-VNAV systems, LNAV/VNAV NA below -17°C or above 54°C.		

D-ATIS 135.35	BUFFALO APP CON 126.15 263.125	BUFFALO TOWER 120.5 257.8	GND CON 133.2 257.8	CLNC DEL 124.7 257.8	CPDLC
-------------------------	--	-------------------------------------	-------------------------------	--------------------------------	-------



ELEV 727	TDZE 708
----------	----------

4 NM Holding Pattern	WABUS	HIRIN	LANEC	TRAVA
3000	2400	2400	1520	3000
GP 3.00° TCH 46	7 NM	2.8 NM	1.4 NM	1.1 NM



CATEGORY	A	B	C	D
LPV DA		908/18	200 (200-½)	
LNAV/VNAV DA		997/24	289 (300-½)	
LNAV MDA	1060/24	352 (400-½)	1060/35	352 (400-¾)
CIRCLING	1200-1	473 (500-1)	1220-1½ 493 (500-1½)	1340-2 613 (700-2)

REIL Rwy 14
TDZ/CL Rws 5 and 23
HIRL Rws 5-23 and 14-32

NE-2, 30 DEC 2021 to 27 JAN 2022

NE-2, 30 DEC 2021 to 27 JAN 2022