

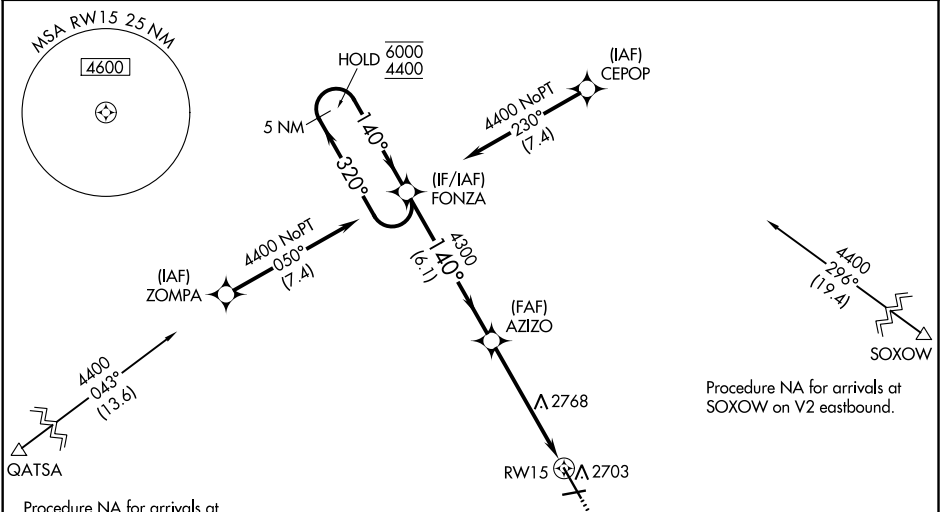
WAAS CH 99643 W15A	APP CRS 140°	Rwy Idg 7301 TDZE 2586 Apt Elev 2592
--	------------------------	---

RNAV (GPS) RWY 15

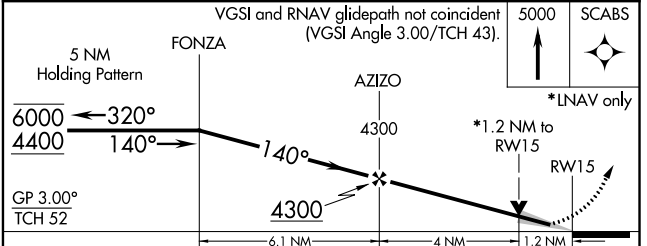
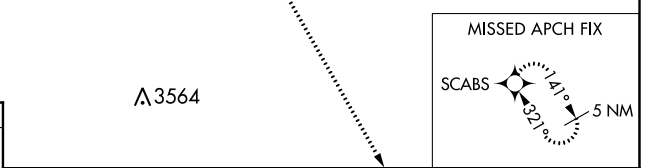
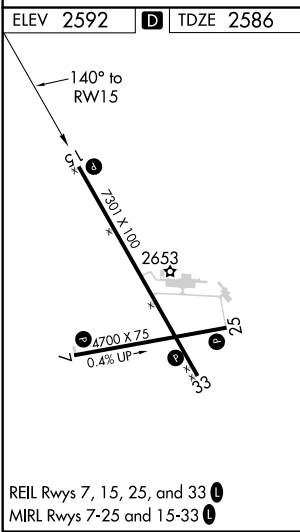
DICKINSON - THEODORE ROOSEVELT RGNL (DIK)

RNP APCH.	MISSED APPROACH: Climb to 5000 direct SCABS and hold.
<p>For uncompensated Baro-VNAV systems, LNAV/VNAV NA below -24°C or above 54°C.</p>	

ASOS 118.375	MINNEAPOLIS CENTER 124.25 236.825	UNICOM 123.0 (CTAF) 0
------------------------	---	---------------------------------



ELEV 2592 **D** TDZE 2586



CATEGORY	A	B	C	D
LPV DA	2786-1 200 (200-1)			
LNAV/VNAV DA	2836-1 250 (300-1)			
LNAV MDA	3020-1	434 (500-1)	3020-1¼	434 (500-1¼)
C CIRCLING	3060-1	468 (500-1)	3120-1½ 528 (600-1½)	3200-2 608 (700-2)

RNAV (GPS) RWY 15

NC-1, 30 DEC 2021 to 27 JAN 2022

NC-1, 30 DEC 2021 to 27 JAN 2022