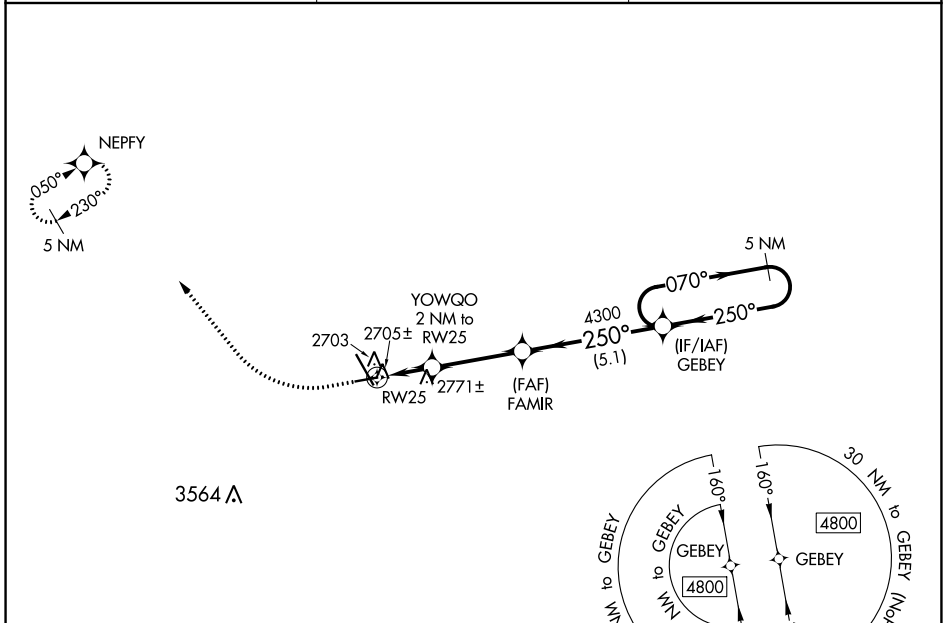


WAAS CH <b>82534</b> <b>W25A</b>	APP CRS <b>250°</b>	Rwy Idg TDZE Apt Elev	<b>4700</b> <b>2592</b> <b>2592</b>
--	------------------------	-----------------------------	---

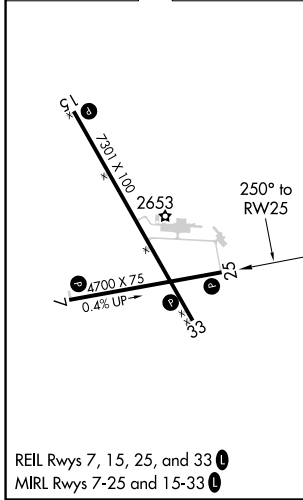
# RNAV (GPS) RWY 25

DICKINSON - THEODORE ROOSEVELT RGNL (DIK)

RNP APCH.		MISSED APPROACH: Climb to 3200 then climbing right turn to 4800 direct NEPFY and hold.
ASOS <b>118.375</b>	MINNEAPOLIS CENTER <b>124.25 236.825</b>	UNICOM <b>123.0 (CTAF) 0</b>



ELEV	2592	<b>D</b>	TDZE	2592
------	------	----------	------	------



	3200	4800	NEPFY	
	↑		↪	✧
	YOWQO 2 NM to RW25		FAMIR	GEBEY 5 NM Holding Pattern
	3240	4300	250°	070° → 4800
	≤ 3.00° TCH 28			← 250°
	2 NM	3.3 NM	5.1 NM	
CATEGORY	A	B	C	D
LP MDA	2980-1	388 (400-1)	2980-1½	388 (400-1½)
LNAV MDA	3060-1	468 (500-1)	3060-1¾	468 (500-1¾)
<b>C</b> CIRCLING	3080-1 488 (500-1)	3100-1 508 (600-1)	3120-1½ 528 (600-1½)	3220-2 628 (700-2)

NC-1, 30 DEC 2021 to 27 JAN 2022

NC-1, 30 DEC 2021 to 27 JAN 2022