

WAAS CH 69543 W33A	APP CRS 320°	Rwy ldg 7301 TDZE 2586 Apt Elev 2592
--	------------------------	---

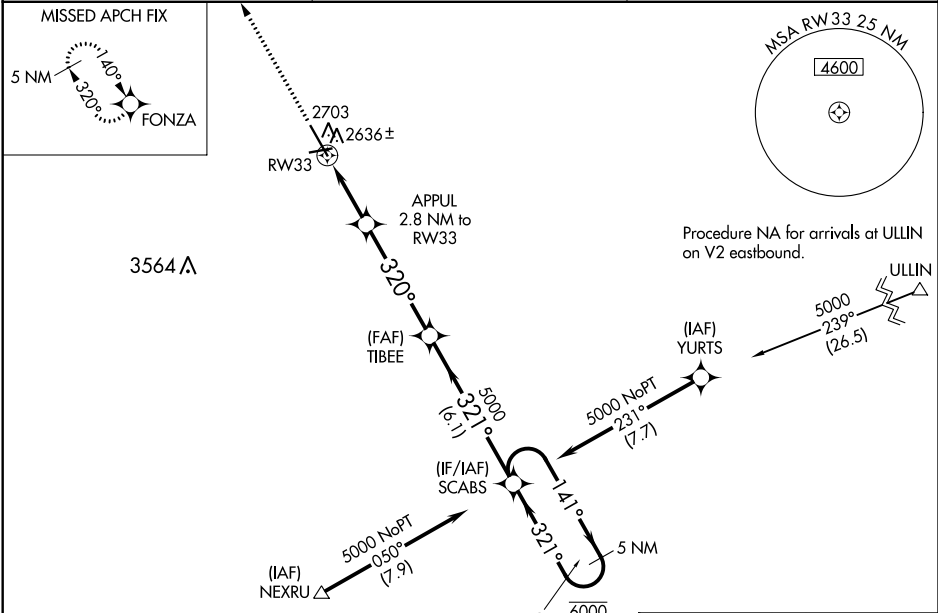
RNAV (GPS) RWY 33

DICKINSON - THEODORE ROOSEVELT RGNL (DIK)

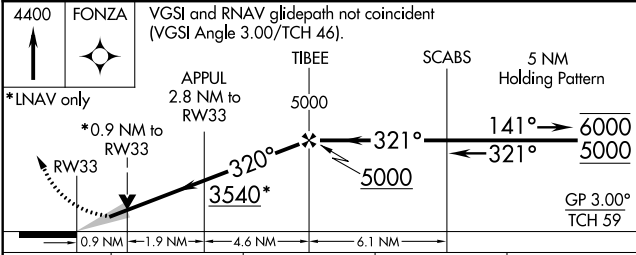
RNP APCH.
 For uncompensated Baro-VNAV systems, LNAV/VNAV NA below -23°C or above 54°C.

MISSED APPROACH: Climb to 4400 direct FONZA and hold.

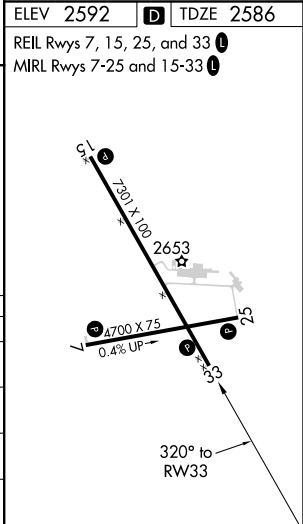
ASOS 118.375	MINNEAPOLIS CENTER 124.25 236.825	UNICOM 123.0 (CTAF)
------------------------	---	-------------------------------



ELEV 2592 TDZE 2586
 REIL Rwy 7, 15, 25, and 33
 MIRL Rwy 7-25 and 15-33



CATEGORY	A	B	C	D
LPV DA		2836-1	250 (300-1)	
LNAV/VNAV DA		2836-1	250 (300-1)	
LNAV MDA		2900-1	314 (400-1)	
CIRCLING	3060-1	468 (500-1)	3120-1½ 528 (600-1½)	3200-2 608 (700-2)



NC-1, 30 DEC 2021 to 27 JAN 2022

NC-1, 30 DEC 2021 to 27 JAN 2022