

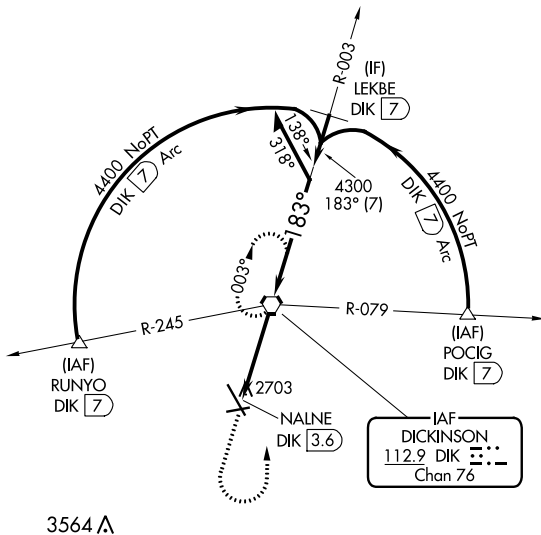
VORTAC DIK <b>112.9</b> Chan <b>76</b>	APP CRS <b>183°</b>	Rwy ldg TDZE Apt Elev <b>2592</b>	<b>N/A</b> <b>N/A</b>
--	------------------------	--	--------------------------

**VOR-A**

DICKINSON - THEODORE ROOSEVELT RGNL (DIK)

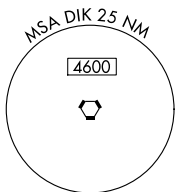
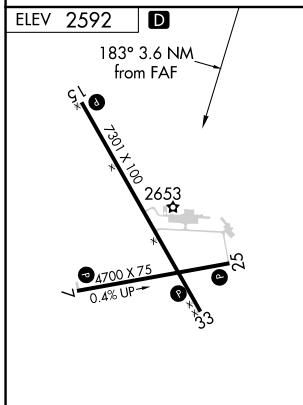
<p><b>⚠</b> When local altimeter setting not received, use Bowman altimeter setting and increase all MDAs 280 feet, increase Circling Cat C visibility 3/4 SM, Cat D visibility 1 SM.</p>	<p>MISSED APPROACH: Climb to 4600 then turn left direct DIK VORTAC and hold.</p>
---	--

ASOS <b>118.375</b>	MINNEAPOLIS CENTER <b>124.25 236.825</b>	UNICOM <b>123.0 (CTAF) 0</b>
------------------------	---	---------------------------------



NC-1, 30 DEC 2021 to 27 JAN 2022

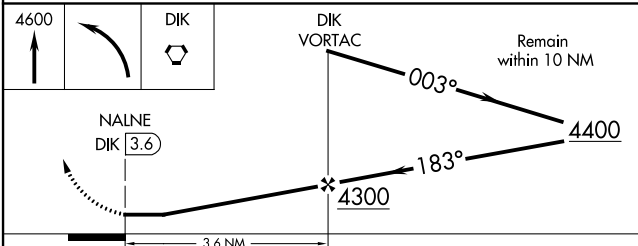
NC-1, 30 DEC 2021 to 27 JAN 2022



REIL Rwys 7, 15, 25, and 33 **Ⓛ**

MIRL Rwys 7-25 and 15-33 **Ⓛ**

FAF to MAP 3.6 NM					
Knots	60	90	120	150	180
Min:Sec	3:36	2:24	1:48	1:26	1:12



CATEGORY	A	B	C	D
<b>ⓐ</b> CIRCLING	3080-1 488 (500-1)	3100-1 508 (600-1)	3120-1½ 528 (600-1½)	3220-2 628 (700-2)

**VOR-A**