

# RNAV (GPS) RWY 4

APCH CRS	Rwy ldg	4503
044°	TDZE	1066
	Arprt Elev	1066

AL-155 [USA]

MARSHALL AAF (KFRI)

DME/DME RNP -0.3 NA

ODALS



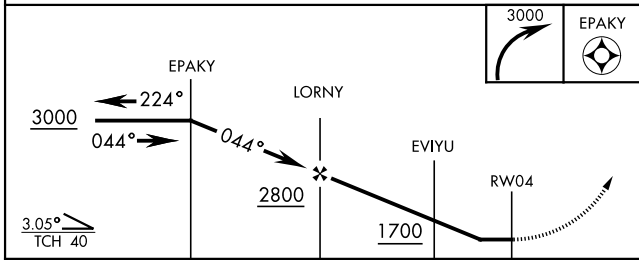
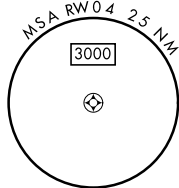
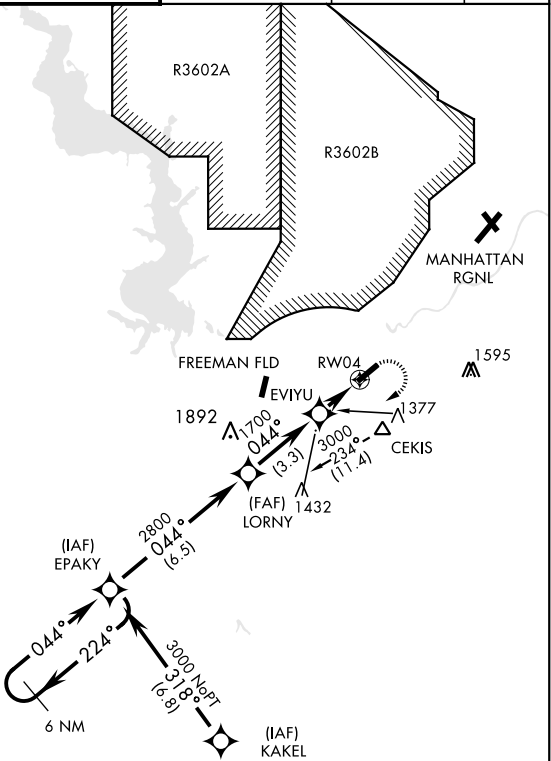
MISSED APPROACH: Climbing right turn to 3000 direct EPAKY and hold.

\* Circling not authorized NW of Rwy 4-22.

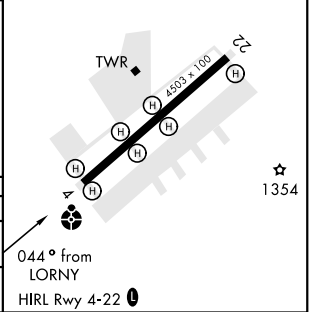
NA Visibility reduction by helicopters NA

ATIS ★	MARSHALL GCA	TOWER ★	GND CON	CLNC DEL	ASR/PAR
121.025	121.25 254.35	126.2 (CTAF) 0 248.65	140.20 229.4	119.65	

Procedure NA for arrival at CEKIS via V4-508 eastbound.



ELEV 1066	TDZE 1066
-----------	-----------



CATEGORY	A	B	C	D
LNAV MDA	1640-1 574 (600-1)	1680-1 614 (700-1)	1640-1½ 574 (600-1½)	1640-1¾ 574 (600-1¾)
CIRCLING *	1660-1 594 (600-1)	1680-1 614 (700-1)	1680-1¾ 614 (700-1¾)	1760-2¼ 694 (700-2¼)

# RNAV (GPS) RWY 4

NC-2, 30 DEC 2021 to 27 JAN 2022

NC-2, 30 DEC 2021 to 27 JAN 2022