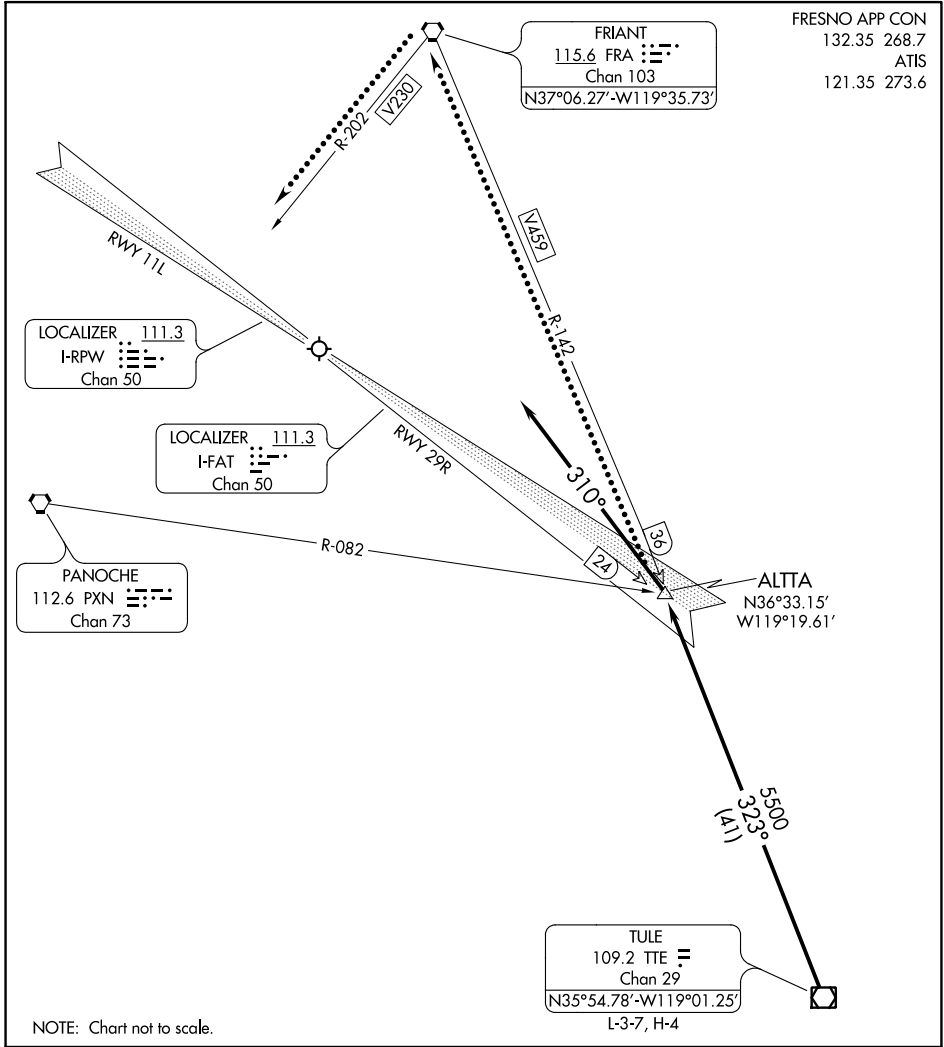


ALTA NINE ARRIVAL



SW-2, 30 DEC 2021 to 27 JAN 2022

SW-2, 30 DEC 2021 to 27 JAN 2022

ARRIVAL ROUTE DESCRIPTION

From over TULE (TTE) VOR/DME on TTE R-323 and FRIANT (FRA) VORTAC R-142 to ALTA. Expect ILS or LOC RWY 29R approach. For Rwy 11L operations: Depart ALTA heading 310° and expect RADAR vectors to LOC Y RWY 11L.

LOST COMMUNICATIONS: Rwy 11L: Proceed to FRA VORTAC on V459, then on V230, execute the LOC Y RWY 11L approach.