

FRESNO, CALIFORNIA

# HI-ILS Z or LOC Z RWY 29R

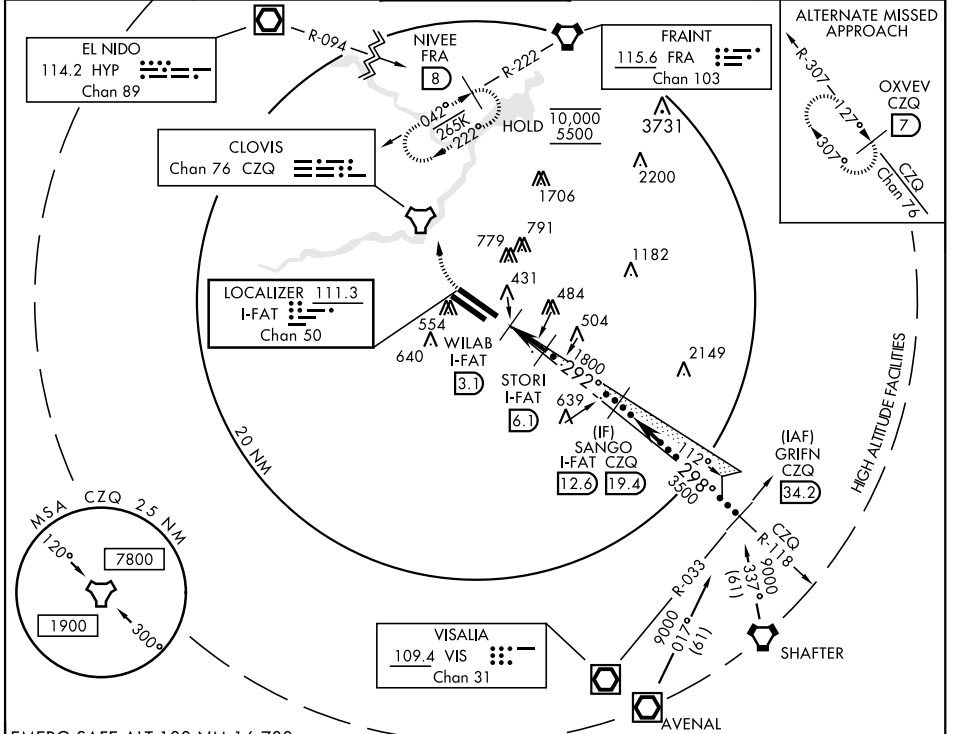
LOC/DME I-FAT <b>111.3</b> Chan <b>50</b>	APCH CRS <b>292°</b>	Rwy Idg 29R <b>9227</b> 29L <b>8008</b> TDZE 29R <b>333</b> 29L <b>331</b> Arprt Elev <b>336</b>
---	-------------------------	---

AL-162 [USAF] FRESNO YOSEMITE INTL (KFAT)

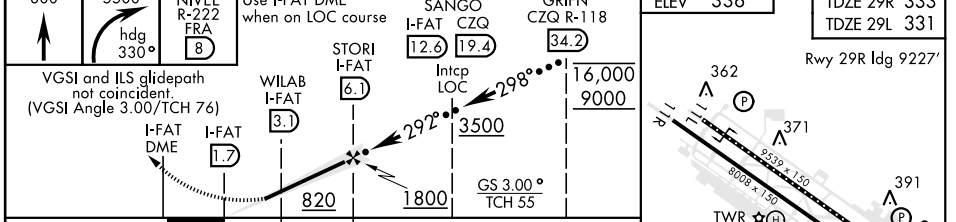
DME required. **ALSF-2** MISSED APPROACH: Climb to 800, then climbing right turn to 5500 on heading 330° and FRA VORTAC R-222 to NIVEE int (FRA 8 DME) and hold, continue climb-in-hold to 5500.

▲ When ALS inop, incr CAT CDE RVR to 40 and vis to ¼ mile.  
▲▲ When ALS inop, incr CAT CDE RVR to 55 and vis to 1 mile.

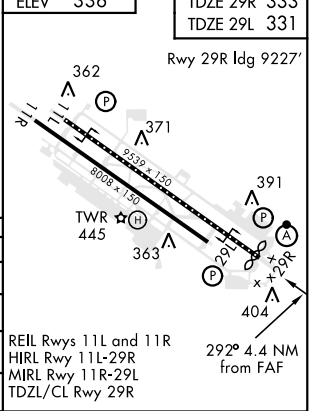
ATIS <b>121.35 273.6</b>	APP CON <b>132.35 323.25</b>	TOWER <b>118.2 251.1</b>	GND CON <b>121.7 348.6</b>	CLNC DEL <b>124.35 348.6</b>
-----------------------------	---------------------------------	-----------------------------	-------------------------------	---------------------------------



EMERG SAFE ALT 100 NM 16,700



CATEGORY	C	D	E
S-ILS 29R*	533/18	200	(200-½)
S-LOC 29R**	700/35	367	(400-¾)
SIDE STEP RWY 29L	700-1½ 369 (400-1½)	700-2	369 (400-2)
CIRCLING	920-1½ 584 (600-1½)	920-2 584 (600-2)	1140-2¾ 804 (900-2¾)



FRESNO, CALIFORNIA

36°47'N-119°43'W

FRESNO YOSEMITE INTL (KFAT)

Amtd 4 10OCT19

# HI-ILS Z or LOC Z RWY 29R

SW-2, 30 DEC 2021 to 27 JAN 2022

SW-2, 30 DEC 2021 to 27 JAN 2022