

FRESNO, CALIFORNIA

HI-TACAN RWY 11L

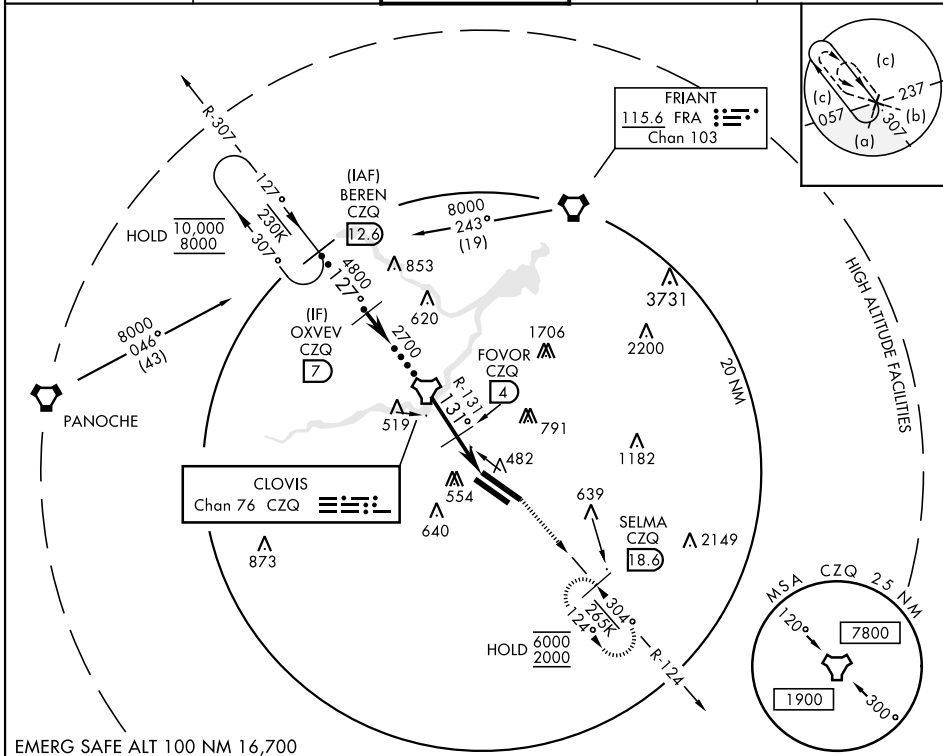
TACAN CZQ Chan 76	APCH CRS 131°	Rwy Idg TDZE Arprt Elev	11L 9539 11L 336 336	11R 8008 11R 333 333
-----------------------------	-------------------------	-------------------------------	---	---

AL-162 [USAF] FRESNO YOSEMITE INTL (KFAT)

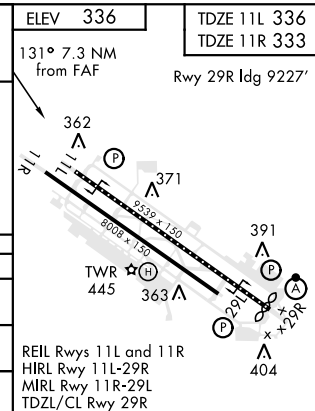
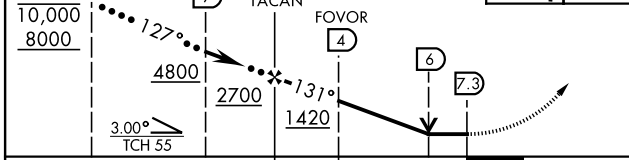
DME required.

MISSED APPROACH: Climbing left turn to 2000 on CZQ TACAN R-124 to SELMA / 18.6 DME and hold.

ATIS 121.35 273.6	APP CON 119.6 351.95	TOWER 118.2 251.1	GND CON 121.7 348.6	CLNC DEL 124.35 348.6
-----------------------------	--------------------------------	-----------------------------	-------------------------------	---------------------------------



BEREN CZQ R-307 (12.6)	OXVEV (7)	TACAN	FOVOR (4)	2000 CZQ R-124 (18.6)	ELEV 336	TDZE 11L 336 TDZE 11R 333
------------------------	-----------	-------	-----------	-----------------------	----------	------------------------------



CATEGORY	C	D	E
S-11L	800-1½	464	(500-1½)
SIDESTEP 11R	800-1½ 467 (500-1½)	800-2	467 (500-2)
CIRCLING	920-1½ 584 (600-1½)	920-2 584 (600-2)	1140-2¾ 804 (900-2¾)

FRESNO, CALIFORNIA

36° 47' N - 119° 43' W

FRESNO YOSEMITE INTL (KFAT)

Amdt 2A 10OCT19

HI-TACAN RWY 11L

SW-2, 30 DEC 2021 to 27 JAN 2022

SW-2, 30 DEC 2021 to 27 JAN 2022