

TACAN CZQ Chan 76 (112.9)	APP CRS 307°	Rwy Idg TDZE Apt Elev	29R 9227 333 336	29L 8008 331 336
---	------------------------	-----------------------------	--	--

TACAN RWY 29R

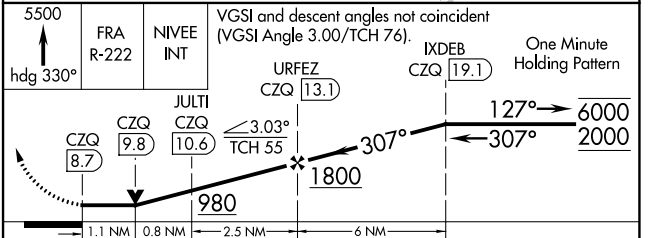
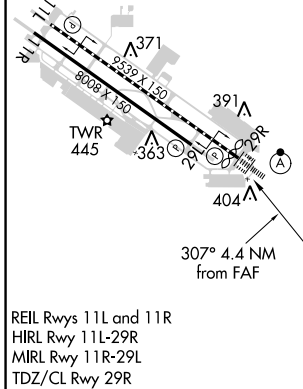
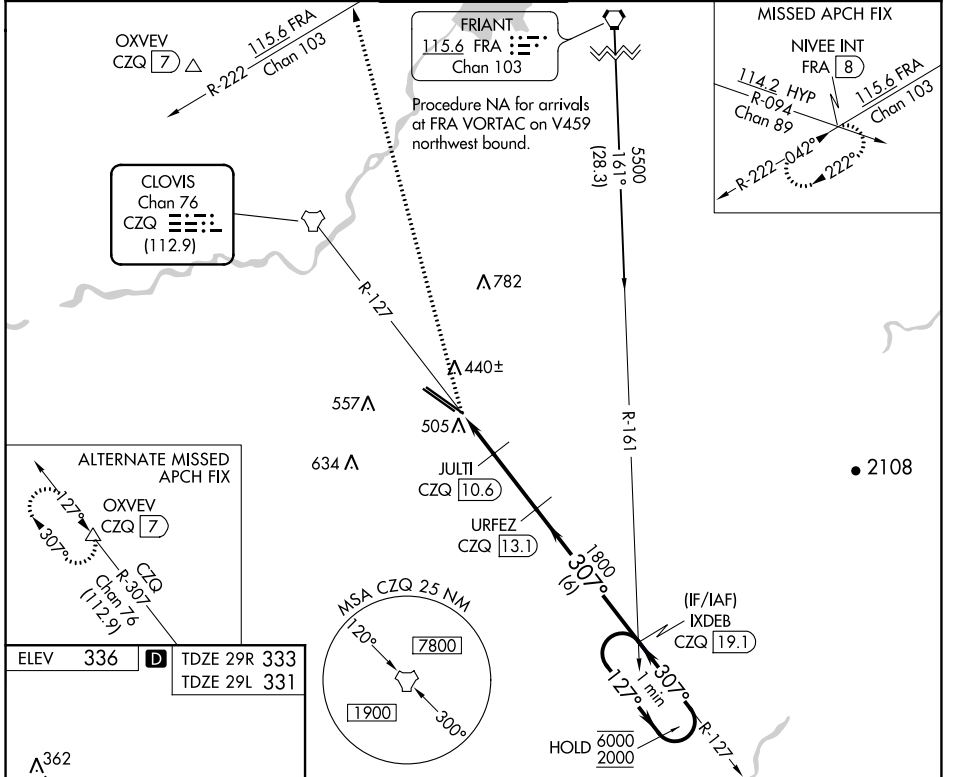
FRESNO YOSEMITE INTL (FAT)

▼ Rwy 29R helicopter visibility reduction below RVR 4000 N/A.
▲ For inop ALS, increase S-29R Cat A/B visibility to RVR 5500 and Cat E visibility to 1/4 mile.

ALSF-2 Rwy 29R

MISSED APPROACH: Climb to 5500 on heading 330° and FRA VORTAC R-222 to NIVEE INT/FRA 8 DME and hold, continue climb-in-hold to 5500.

ATIS 121.35 273.6	FRESNO APP CON 119.6 351.95	FRESNO TOWER 118.2 251.1	GND CON 121.7 348.6	CLNC DEL 124.35 348.6
-----------------------------	---------------------------------------	------------------------------------	-------------------------------	---------------------------------



CATEGORY	A	B	C	D	E
S-29R	760/40 427 (500-3/4)				
SIDESTEP 29L	760/55 429 (500-1)	760-1 1/2 429 (500-1 1/2)	760-2 429 (500-2)		
C CIRCLING	820-1 484 (500-1)	920-1 1/2 584 (600-1 1/2)	920-2 584 (600-2)	1140-2 3/4 804 (900-2 3/4)	

SW-2, 30 DEC 2021 to 27 JAN 2022

SW-2, 30 DEC 2021 to 27 JAN 2022