

# ILS RWY 22L (SA CAT I & II)

CHICAGO O'HARE INTL (ORD)

|              |             |          |      |
|--------------|-------------|----------|------|
| LOC I-LQQ    | APP CRS     | Rwy ldg  | 8075 |
| <b>110.1</b> | <b>225°</b> | TDZE     | 654  |
|              |             | Apt Elev | 680  |

RADAR required for procedure entry.

- Simultaneous approach authorized.
- SA CAT I: Requires specific OPSPEC, MSPEC, or LOA approval and use of HUD to DH.
- SA CAT II: Reduced lighting: Requires specific OPSPEC, MSPEC, or LOA approval and use of autoland or HUD to touchdown.

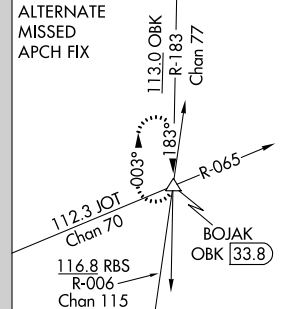
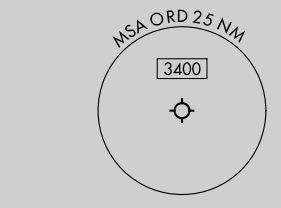
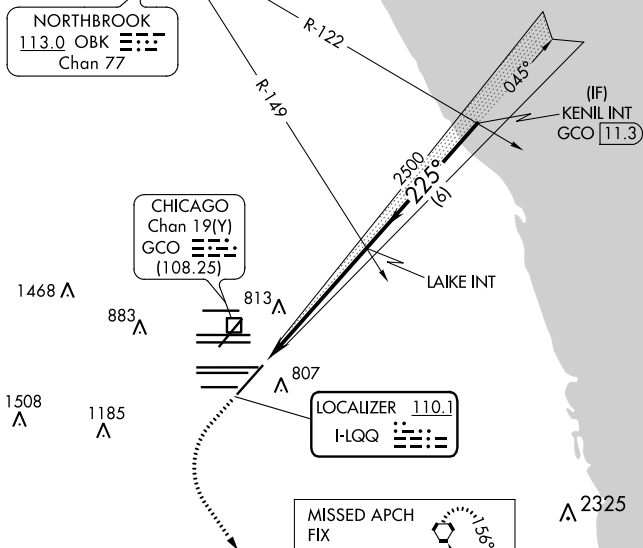


**MISSED APPROACH:**  
Climb to 1100 then climbing left turn to 4000 direct CGT VORTAC and hold.

|                      |               |               |              |                    |              |                |                |               |              |              |
|----------------------|---------------|---------------|--------------|--------------------|--------------|----------------|----------------|---------------|--------------|--------------|
| CHICAGO APP CON      | O'HARE TOWERS |               |              |                    | GND CON      | (TWR CENTER)   | CLNC DEL       |               |              |              |
| <b>119.0 292.125</b> | <b>128.15</b> | <b>348.0</b>  | (Rwy 9L/27R) | <b>133.0 348.0</b> | (110R/28L)   | <b>124.125</b> | (TWR NORTH)    | <b>121.75</b> | (OBND)       |              |
|                      | <b>120.75</b> | <b>121.15</b> | <b>126.9</b> | <b>132.7</b>       | <b>348.0</b> | (CENTER)       | <b>118.05</b>  | (TWR SOUTH)   | <b>121.9</b> | (IBND)       |
|                      |               |               |              |                    |              |                | <b>226.675</b> | (ALL TWRs)    |              | <b>121.6</b> |

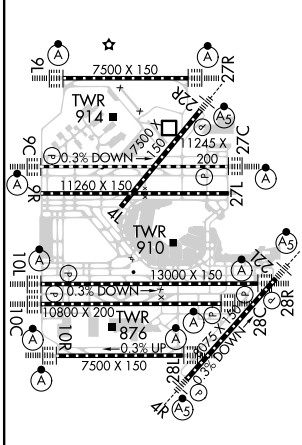
D-ATIS  
**135.4**  
**282.225**

CPDLC

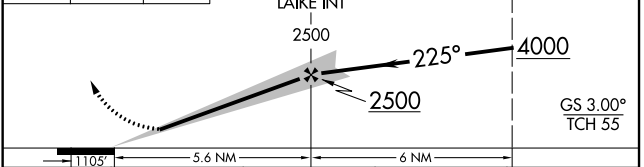


|          |          |          |
|----------|----------|----------|
| ELEV 680 | <b>D</b> | TDZE 654 |
|----------|----------|----------|

MISSED APCH FIX  
 CHICAGO HEIGHTS  
 CGT 114.2 Chan 89



|      |      |     |   |
|------|------|-----|---|
| 1100 | 4000 | CGT | VGSI and ILS glidepath not coincident (VGSI Angle 3.00/TCH 73). |
|------|------|-----|---|



|           |           |           |            |   |
|-----------|-----------|-----------|------------|---|
| CATEGORY  | A         | B         | C          | D |
| S-ILS 22L | SA CAT I  | RA 164/16 | 150 DA 804 |   |
| S-ILS 22L | SA CAT II | RA 112/12 | 100 DA 754 |   |

**SA CATEGORY I & II ILS - SPECIAL AIRCREW & AIRCRAFT CERTIFICATION REQUIRED**

EC-3, 30 DEC 2021 to 27 JAN 2022

EC-3, 30 DEC 2021 to 27 JAN 2022