

LOC/DME I-AC 110.5 Chan 42	APP CRS 273°	Rwy Idg 7782 TDZE 654 Apt Elev 680
--	------------------------	---

ILS RWY 27L (CAT II & III)

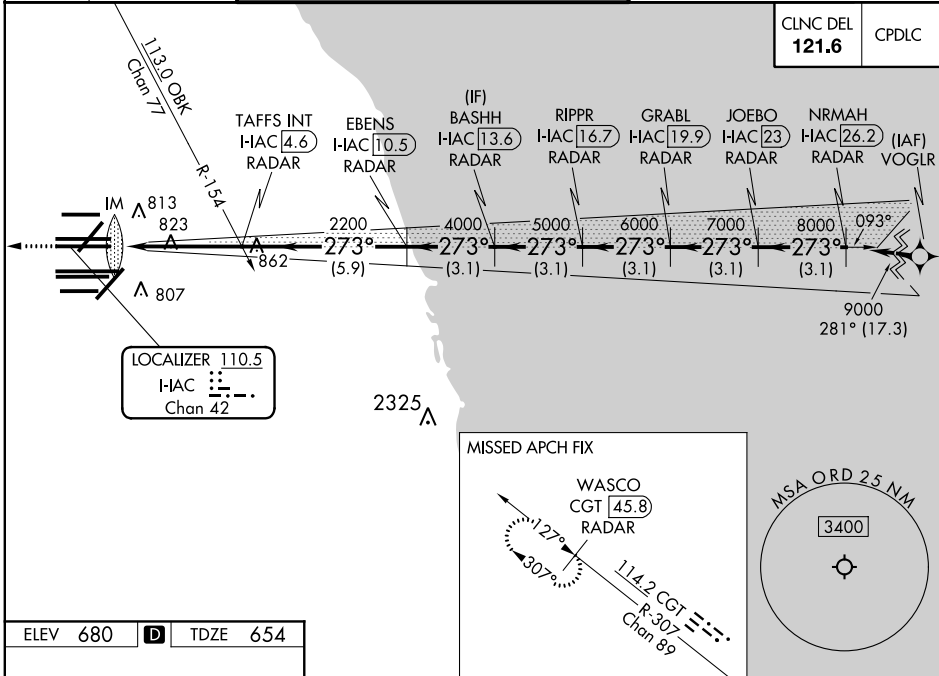
CHICAGO O'HARE INTL (ORD)

From VOGLR: RNAV 1-GPS required. Aircraft not GPS equipped - RADAR required for procedure entry. DME or RADAR required.

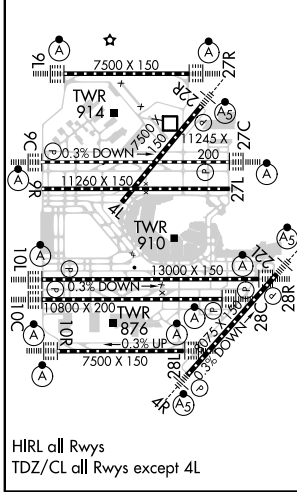
Simultaneous approach authorized.

MISSED APPROACH: Climb to 1200 then climb to 4000 on heading 265° and on CGT VORTAC R-307 to WASCO/CGT 45.8 DME/RADAR and hold.

D-ATIS 135.4 282.225	CHICAGO APP CON 119.0 292.125	O'HARE TOWERS 128.15 348.0 (Rwy 9L/27R) 133.0 348.0 (10R/28L) 120.75 121.15 126.9 132.7 348.0 (CENTER)				GND CON (TWR NORTH) 124.125 (TWR SOUTH) 118.05 (ALL TWRs) 226.675	(TWR CENTER) 121.75 (OBND) 121.9 (IBND)
--	---	--	--	--	--	---	---



ELEV 680	D	TDZE 654
-----------------	----------	-----------------



1200	4000	CGT R-307	WASCO CGT 45.8 RADAR	VGS1 and ILS glidepath not coincident.			
hdg 265°				BASHH I-AC 13.6 RADAR	GRABL I-AC 19.9 RADAR	NRMAH I-AC 26.2 RADAR	
				TAFS INT I-AC 4.6 RADAR	RIPPR I-AC 16.7 RADAR	JOEBO I-AC 23 RADAR	
				I-AC DME ANTENNA	EBENS I-AC 10.5 RADAR		
				IM 750			
				2200	4000	5000	6000
				273°	273°	273°	273°
				9000	8000		
				GS 3.00°	TCH 55		
				1040'	4.7 NM	5.9 NM	3.1 NM
				3.1 NM	3.1 NM	3.1 NM	3.1 NM
CATEGORY	A	B	C	D			
S-ILS 27L	CAT II RA 110/12			100 DA 754			
S-ILS 27L	CAT III			RVR 06			

CATEGORY II & III ILS - SPECIAL AIRCREW & AIRCRAFT CERTIFICATION REQUIRED

EC-3, 30 DEC 2021 to 27 JAN 2022

EC-3, 30 DEC 2021 to 27 JAN 2022