

LOC/DME I-VQX 110.75 Chan 44(Y)	APP CRS 274°	Rwy Idg TDZE Apt Elev	7500 667 680
--	------------------------	-----------------------------	---

ILS RWY 28L (CAT II & III)

CHICAGO O'HARE INTL (ORD)

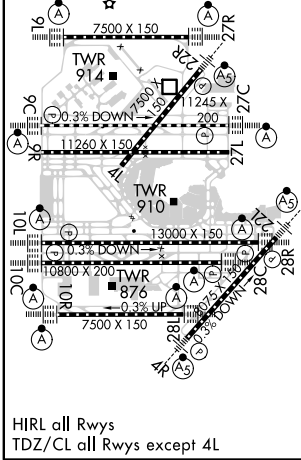
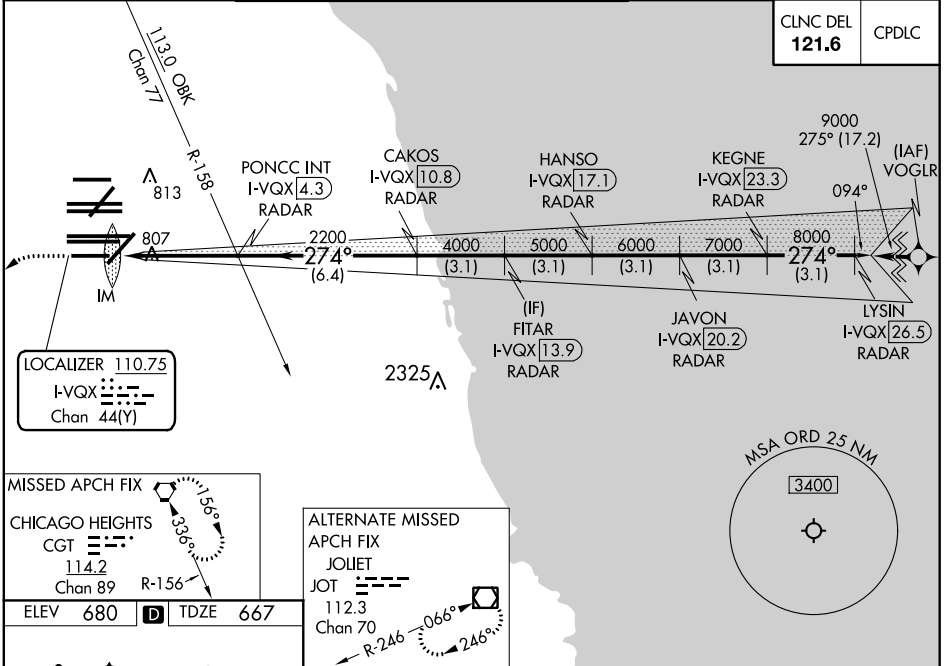
From VOGLR: RNAV 1-GPS required.
 Aircraft not GPS equipped - RADAR required for procedure entry.
 DME or RADAR required.

Simultaneous approach authorized.
 CAT II: RVR 1000 authorized with specific OPSPEC, MSPEC,
 or LOA approval and use of autoland or HUD to touchdown.



MISSED APPROACH:
 Climb to 1200 then
 climbing left turn to
 4000 direct CGT
 VORTAC and hold.

D-ATIS 135.4 282.225	CHICAGO APP CON 119.0 292.125	O'HARE TOWERS 128.15 348.0 (Rwy 9L/27R) 133.0 348.0 (10R/28L)				GND CON (TWR NORTH) 124.125 (TWR SOUTH) 118.05 (ALL TWRs) 226.675	(TWR CENTER) (IBND) 121.75 (IBND) 121.9
--	--	--	--	--	--	---	--



ELEV 680	D	TDZE 667																		
1200	4000	CGT																		
<table border="1"> <tr> <td>I-VQX DME ANTENNA</td> <td>IM 767</td> <td>2200</td> <td>4000</td> <td>5000</td> <td>6000</td> <td>7000</td> <td>8000</td> <td>9000</td> </tr> <tr> <td></td> <td></td> <td>4.7 NM</td> <td>6.4 NM</td> <td>3.1 NM</td> <td>3.1 NM</td> <td>3.1 NM</td> <td>3.1 NM</td> <td>3.1 NM</td> </tr> </table>			I-VQX DME ANTENNA	IM 767	2200	4000	5000	6000	7000	8000	9000			4.7 NM	6.4 NM	3.1 NM	3.1 NM	3.1 NM	3.1 NM	3.1 NM
I-VQX DME ANTENNA	IM 767	2200	4000	5000	6000	7000	8000	9000												
		4.7 NM	6.4 NM	3.1 NM	3.1 NM	3.1 NM	3.1 NM	3.1 NM												
<table border="1"> <tr> <td>CAKOS I-VQX [10.8] RADAR</td> <td>HANSO I-VQX [17.1] RADAR</td> <td>KEGNE I-VQX [23.3] RADAR</td> <td>JAVON I-VQX [20.2] RADAR</td> <td>LYSIN I-VQX [26.5] RADAR</td> </tr> </table>			CAKOS I-VQX [10.8] RADAR	HANSO I-VQX [17.1] RADAR	KEGNE I-VQX [23.3] RADAR	JAVON I-VQX [20.2] RADAR	LYSIN I-VQX [26.5] RADAR													
CAKOS I-VQX [10.8] RADAR	HANSO I-VQX [17.1] RADAR	KEGNE I-VQX [23.3] RADAR	JAVON I-VQX [20.2] RADAR	LYSIN I-VQX [26.5] RADAR																
<table border="1"> <tr> <td>PONCC INT I-VQX [4.3] RADAR</td> <td>FITAR I-VQX [13.9] RADAR</td> <td>JAVON I-VQX [20.2] RADAR</td> <td>LYSIN I-VQX [26.5] RADAR</td> </tr> </table>			PONCC INT I-VQX [4.3] RADAR	FITAR I-VQX [13.9] RADAR	JAVON I-VQX [20.2] RADAR	LYSIN I-VQX [26.5] RADAR														
PONCC INT I-VQX [4.3] RADAR	FITAR I-VQX [13.9] RADAR	JAVON I-VQX [20.2] RADAR	LYSIN I-VQX [26.5] RADAR																	
<table border="1"> <tr> <td>IM</td> <td>2200</td> <td>4000</td> <td>5000</td> <td>6000</td> <td>7000</td> <td>8000</td> <td>9000</td> </tr> <tr> <td></td> <td></td> <td>4.7 NM</td> <td>6.4 NM</td> <td>3.1 NM</td> <td>3.1 NM</td> <td>3.1 NM</td> <td>3.1 NM</td> </tr> </table>			IM	2200	4000	5000	6000	7000	8000	9000			4.7 NM	6.4 NM	3.1 NM	3.1 NM	3.1 NM	3.1 NM		
IM	2200	4000	5000	6000	7000	8000	9000													
		4.7 NM	6.4 NM	3.1 NM	3.1 NM	3.1 NM	3.1 NM													
<table border="1"> <tr> <td>CATEGORY</td> <td>A</td> <td>B</td> <td>C</td> <td>D</td> </tr> <tr> <td>S-ILS 28L</td> <td colspan="4">CAT II RA 106/12 100 DA 767</td> </tr> <tr> <td>S-ILS 28L</td> <td colspan="4">CAT III RVR 06</td> </tr> </table>			CATEGORY	A	B	C	D	S-ILS 28L	CAT II RA 106/12 100 DA 767				S-ILS 28L	CAT III RVR 06						
CATEGORY	A	B	C	D																
S-ILS 28L	CAT II RA 106/12 100 DA 767																			
S-ILS 28L	CAT III RVR 06																			

CATEGORY II & III ILS - SPECIAL AIRCREW & AIRCRAFT CERTIFICATION REQUIRED

EC-3, 30 DEC 2021 to 27 JAN 2022

EC-3, 30 DEC 2021 to 27 JAN 2022