

LOC I-FJU <b>110.1</b>	APP CRS <b>045°</b>	Rwy ldg TDZE Apt Elev <b>8075</b> <b>661</b> <b>680</b>
---------------------------	------------------------	--

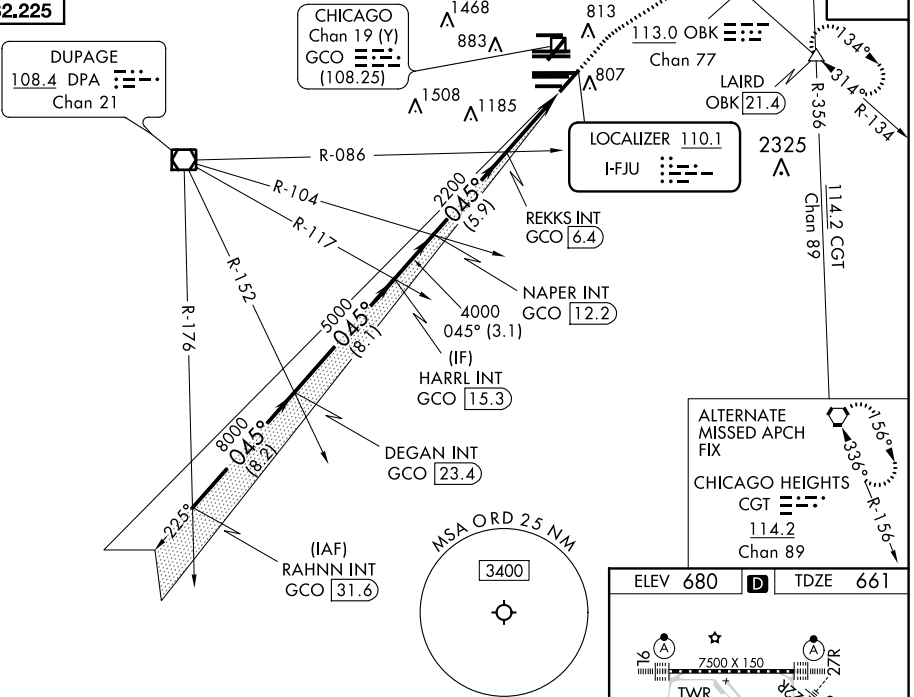
# ILS RWY 4R (SA CAT I & II)

CHICAGO O'HARE INTL (ORD)

RADAR required for procedure entry.		MALSR	MISSED APPROACH: Climb to 1200 then climbing right turn to 4000 on heading 060° and OBK VOR/DME R-134 to LAIRD INT/OBK 21.4 DME and hold.
Simultaneous approach authorized. SA CAT I: Requires specific OPSPEC, MSPEC, or LOA approval and use of HUD to DH. SA CAT II: Reduced lighting: Requires specific OPSPEC, MSPEC, or LOA approval and use of autoland or HUD to touchdown.			

CHICAGO APP CON <b>119.0 292.125</b>	O'HARE TOWERS <b>128.15 348.0</b> (Rwy 9L/27R) <b>120.75 121.15 126.9 132.7 348.0</b> (CENTER)	<b>133.0 348.0</b> (10R/28L)	GND CON (TWR NORTH) <b>124.125 118.05</b> (TWR SOUTH) <b>226.675</b> (ALL TWRs)	(TWR CENTER) <b>121.75</b> (OBND) <b>121.9</b> (IBND)	CLNC DEL <b>121.6</b>
---	--	------------------------------	---	---	--------------------------

D-ATIS <b>135.4</b> <b>282.225</b>
--



ALTERNATE MISSED APCH FIX
CHICAGO HEIGHTS CGT <b>114.2</b> Chan 89

RAHNN INT GCO <b>31.6</b>	DEGAN INT GCO <b>23.4</b>	HARRL INT GCO <b>15.3</b>	NAPER INT GCO <b>12.2</b>	REKKS INT GCO <b>6.4</b>	OBK R-134	LAIRD
VGSI and ILS glidepath not coincident (VGSI Angle 3.00/TCH 67). GS 3.00° TCH 52		1200 4000 hdg 060°		11000 8000 5000 4000 2200		
8.2 NM		8.1 NM		3.1 NM		5.9 NM
4.4 NM		1049'				

ELEV 680	TDZE 661
----------	----------

The detailed airport diagram shows the layout of the airport, including:
 

- Runways:** 4L, 4R, 8, 9, 10, 15, 16, 17, 28L, 28R.
- Taxiways:** A, B, C, D, E, F, G, H, I, J, K, L, M, N, O, P, Q, R, S, T, U, V, W, X, Y, Z.
- Navigation Aids:** TWR 914, TWR 910, TWR 876, TWR 875, TWR 874, TWR 873, TWR 872, TWR 871, TWR 870, TWR 869, TWR 868, TWR 867, TWR 866, TWR 865, TWR 864, TWR 863, TWR 862, TWR 861, TWR 860, TWR 859, TWR 858, TWR 857, TWR 856, TWR 855, TWR 854, TWR 853, TWR 852, TWR 851, TWR 850, TWR 849, TWR 848, TWR 847, TWR 846, TWR 845, TWR 844, TWR 843, TWR 842, TWR 841, TWR 840, TWR 839, TWR 838, TWR 837, TWR 836, TWR 835, TWR 834, TWR 833, TWR 832, TWR 831, TWR 830, TWR 829, TWR 828, TWR 827, TWR 826, TWR 825, TWR 824, TWR 823, TWR 822, TWR 821, TWR 820, TWR 819, TWR 818, TWR 817, TWR 816, TWR 815, TWR 814, TWR 813, TWR 812, TWR 811, TWR 810, TWR 809, TWR 808, TWR 807, TWR 806, TWR 805, TWR 804, TWR 803, TWR 802, TWR 801, TWR 800, TWR 799, TWR 798, TWR 797, TWR 796, TWR 795, TWR 794, TWR 793, TWR 792, TWR 791, TWR 790, TWR 789, TWR 788, TWR 787, TWR 786, TWR 785, TWR 784, TWR 783, TWR 782, TWR 781, TWR 780, TWR 779, TWR 778, TWR 777, TWR 776, TWR 775, TWR 774, TWR 773, TWR 772, TWR 771, TWR 770, TWR 769, TWR 768, TWR 767, TWR 766, TWR 765, TWR 764, TWR 763, TWR 762, TWR 761, TWR 760, TWR 759, TWR 758, TWR 757, TWR 756, TWR 755, TWR 754, TWR 753, TWR 752, TWR 751, TWR 750, TWR 749, TWR 748, TWR 747, TWR 746, TWR 745, TWR 744, TWR 743, TWR 742, TWR 741, TWR 740, TWR 739, TWR 738, TWR 737, TWR 736, TWR 735, TWR 734, TWR 733, TWR 732, TWR 731, TWR 730, TWR 729, TWR 728, TWR 727, TWR 726, TWR 725, TWR 724, TWR 723, TWR 722, TWR 721, TWR 720, TWR 719, TWR 718, TWR 717, TWR 716, TWR 715, TWR 714, TWR 713, TWR 712, TWR 711, TWR 710, TWR 709, TWR 708, TWR 707, TWR 706, TWR 705, TWR 704, TWR 703, TWR 702, TWR 701, TWR 700, TWR 699, TWR 698, TWR 697, TWR 696, TWR 695, TWR 694, TWR 693, TWR 692, TWR 691, TWR 690, TWR 689, TWR 688, TWR 687, TWR 686, TWR 685, TWR 684, TWR 683, TWR 682, TWR 681, TWR 680.
- Other Aids:** LAIRD VOR/DME, CHICAGO GCO, LOCALIZER 110.1.

CATEGORY	A	B	C	D
S-ILS 4R	SA CAT I	RA 160/16	150 DA 811	
S-ILS 4R	SA CAT II	RA 111/12	100 DA 761	

**SA CATEGORY I & II ILS - SPECIAL AIRCREW & AIRCRAFT CERTIFICATION REQUIRED**

EC-3, 30 DEC 2021 to 27 JAN 2022

EC-3, 30 DEC 2021 to 27 JAN 2022