

LOC/DME I-OYG 111.9 Chan 56	APP CRS 093°	Rwy Idg 11245 TDZE 673 Apt Elev 680
---	------------------------	--

ILS RWY 9C (CAT II & III)

CHICAGO O'HARE INTL (ORD)

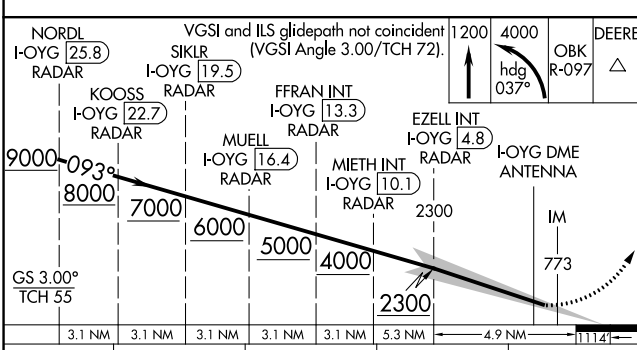
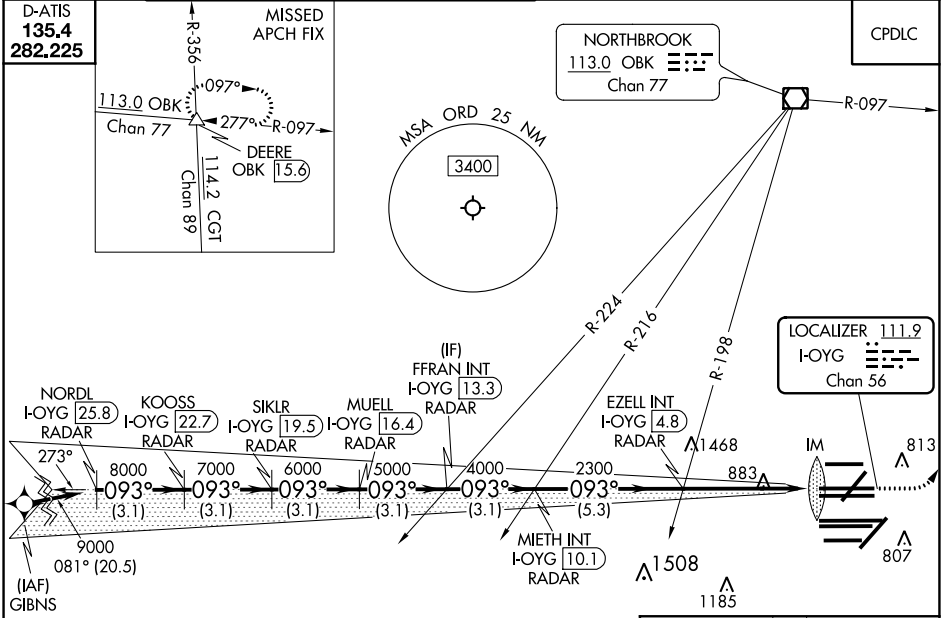
DME or RADAR required. From GIBNS: RNAV 1-GPS required. Aircraft not GPS equipped - RADAR required for procedure entry.

ALSF-2

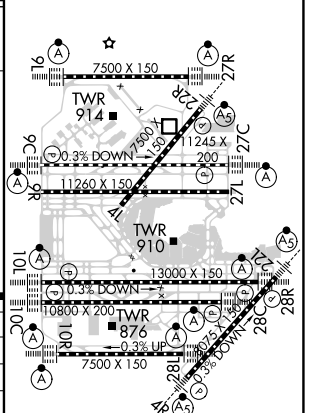
MISSED APPROACH: Climb to 1200 then climbing left turn to 4000 on heading 037° and OBK VOR/DME R-097 to DEERE INT/ OBK 15.6 DME and hold.

Simultaneous approach authorized. CAT II: RVR 1000 authorized with specific OPSPEC, MSPEC or LOA approval and use of Autoland or HUD to touchdown.

CHICAGO APP CON 119.0 292.125	O'HARE TOWERS 128.15 348.0	133.0 348.0 (10R/28L) 348.0 (CENTER)	GND CON (TWR NORTH) 124.125 (TWR SOUTH) 118.05 (ALL TWRs) 226.675	(TWR CENTER) 121.75 (OBND) 121.9 (IBND)	CLNC DEL 121.6
---	--------------------------------------	---	---	---	--------------------------



ELEV 680	D	TDZE 673
-----------------	----------	-----------------



CATEGORY	A	B	C	D
S-ILS 9L	CAT II RA 100/12 100 DA 773			
S-ILS 9L	CAT III RVR 06			

CATEGORY II & III ILS - SPECIAL AIRCREW & AIRCRAFT CERTIFICATION REQUIRED

HIRL all Rwys
TDZ/CL all Rwys except 4L

EC-3, 30 DEC 2021 to 27 JAN 2022

EC-3, 30 DEC 2021 to 27 JAN 2022