

LOC/DME I-MED <b>111.1</b> Chan <b>48</b>	APP CRS <b>093°</b>	Rwy Ldg <b>12246</b> TDZE <b>672</b> Apt Elev <b>680</b>
---	------------------------	--

# ILS or LOC RWY 10L

CHICAGO O'HARE INTL (ORD)

From GIBNS: RNAV-1 GPS required.  
 RNAV 1-GPS or RADAR required for procedure entry. DME or RADAR required.  
 Simultaneous approach authorized.

ALSF-2  
 MISSED APPROACH: Climb to 4000 on heading 093° and CGT VORTAC R-336 to CGT VORTAC and hold.

CHICAGO APP CON <b>119.0 292.125</b>	O'HARE TOWERS <b>128.15 348.0</b> (Rwy 9L/27R) <b>133.0 348.0</b> (10R/28L) <b>126.9 348.0</b> (CENTER)	GND CON (TWR CENTER) <b>124.125</b> (TWR NORTH) <b>118.05</b> (TWR SOUTH) <b>226.675</b> (ALL TWRs)	(TWR CENTER) <b>121.75</b> (OBND) <b>121.9</b> (IBND)	CLNC DEL <b>121.6</b>
---	--	--	---	--------------------------

D-ATIS **135.4**  
**282.225**

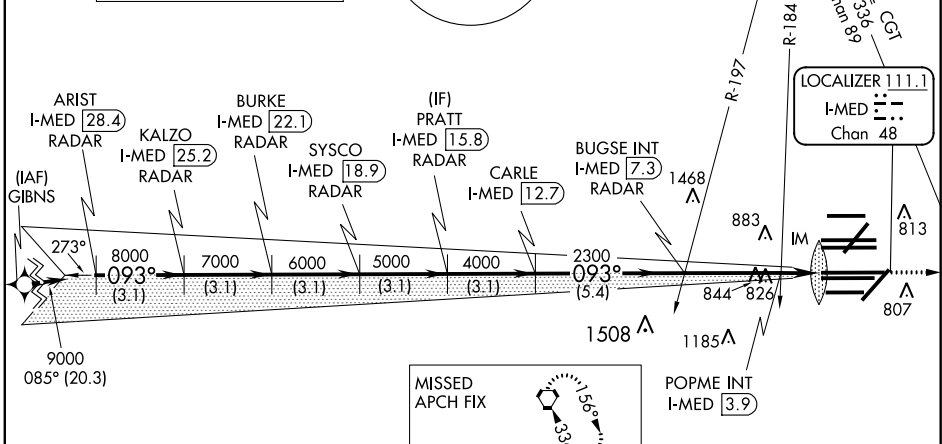
ALTERNATE MISSED APCH FIX

108.4 DPA 261° -R-081  
 Chan 21  
 BLUTO DPA 41 RADAR

MSA ORD 2.5 NM  
 3400

NORTHBROOK 113.0 OBK Chan 77

CPDLC



ARIST I-MED [28.4] RADAR  
 BURKE I-MED [22.1] RADAR  
 PRATT I-MED [15.8] RADAR  
 KALZO I-MED [25.2] RADAR  
 SYSCO I-MED [18.9] RADAR  
 CARLE I-MED [12.7] RADAR  
 BUGSE INT I-MED [7.3] RADAR  
 POPME INT I-MED [3.9]

VGSI and ILS glidepath not coincident (VGSI Angle 3.00/TCH 74).

CGT	hdg	CGT	CGT
4000	093°	R-336	

\*LOC only.

CGT	hdg	CGT	CGT
9000	093°		
8000			
7000			
6000			
5000			
4000			
2300			
1200			

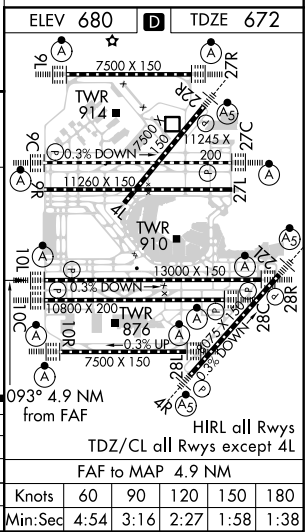
GS 3.00° TCH 56

CGT	hdg	CGT	CGT
3.1 NM			
3.1 NM			
3.1 NM			
3.1 NM			
3.1 NM			
5.4 NM			
3.4 NM			
1.4 NM			
0.1 NM			

CATEGORY	A	B	C	D
S-ILS 10L	872/18		200 (200-½)	
S-LOC 10L	1200/24 528 (600-½)		1200/55 528 (600-1)	

POPME FIX MINIMUMS (DUAL VOR RECEIVERS OR DME REQUIRED)

S-LOC 10L	1080/24	408 (400-½)	1080/40	408 (400-¾)
-----------	---------	-------------	---------	-------------



EC-3, 30 DEC 2021 to 27 JAN 2022

EC-3, 30 DEC 2021 to 27 JAN 2022