

# ILS or LOC RWY 22L

CHICAGO O'HARE INTL (ORD)

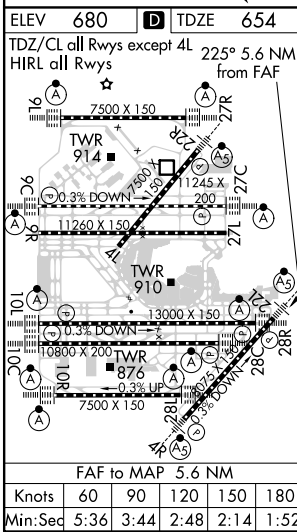
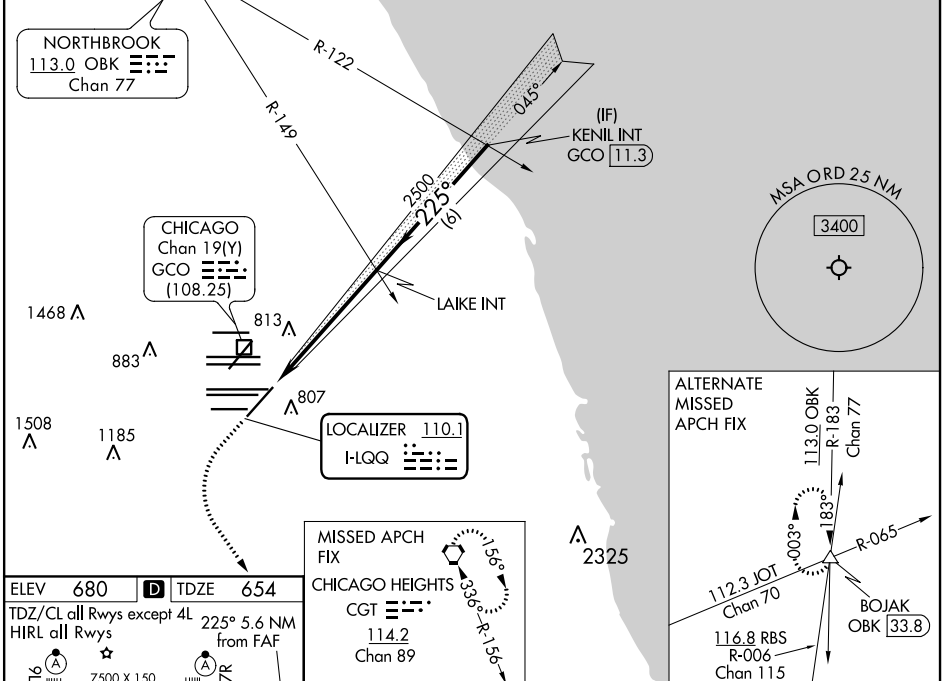
LOC I-LQQ	APP CRS	Rwy ldg TDZE	8075 654
<b>110.1</b>	<b>225°</b>	Apt Elev	<b>680</b>

RADAR required for procedure entry.		MALSR	MISSED APPROACH: Climb to 1100 then climbing left turn to 4000 direct CGT VORTAC and hold.
Simultaneous approach authorized.			

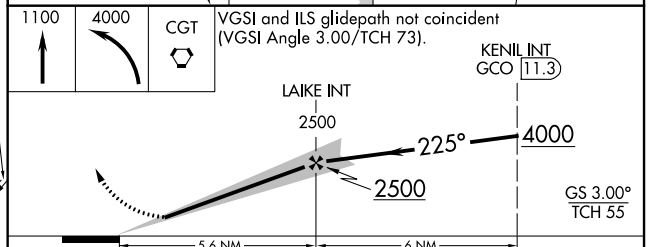
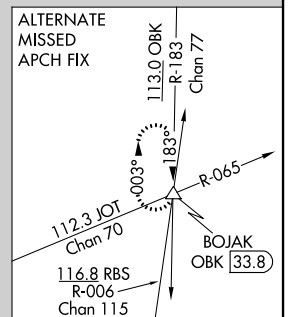
CHICAGO APP CON	O'HARE TOWERS			124.125	GND CON	(TWR CENTER)	CLNC DEL
<b>119.0 292.125</b>	<b>128.15 348.0</b>	<b>133.0 348.0</b>	<b>132.7 348.0</b>	<b>118.05</b>	(TWR NORTH)	<b>121.75</b>	<b>121.6</b>
		(Rwy 9L/27R)	(10R/28L)		(TWR SOUTH)	<b>121.9</b>	
			(CENTER)		(ALL TWRs)		

D-ATIS
<b>135.4</b>
<b>282.225</b>

CPDLC



MISSED APCH FIX	CGT	114.2
CHICAGO HEIGHTS	Chan 89	



VGSI and ILS glidepath not coincident (VGSI Angle 3.00/TCH 73).	KENIL INT GCO 111.3			
CATEGORY	A	B	C	D
S-ILS 22L	854/18 200 (200-½)			
S-LOC 22L	1120/24	466 (500-½)	1120/50	466 (500-1)
CIRCLING	1220-1	540 (600-1)	1220-1½	1460-2½
			540 (600-½)	780 (800-2½)

EC-3, 30 DEC 2021 to 27 JAN 2022

EC-3, 30 DEC 2021 to 27 JAN 2022