

# ILS or LOC RWY 22R

CHICAGO O'HARE INTL (ORD)

LOC I-RXZ	APP CRS	Rwy ldg TDZE	7300
<b>111.3</b>	<b>223°</b>	652	
		Apt Elev	680

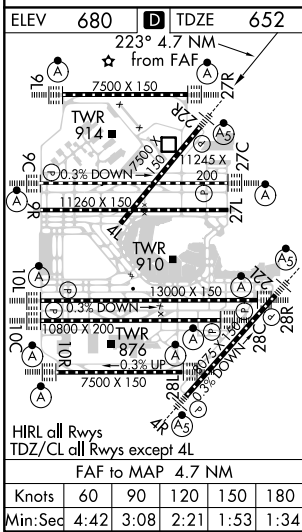
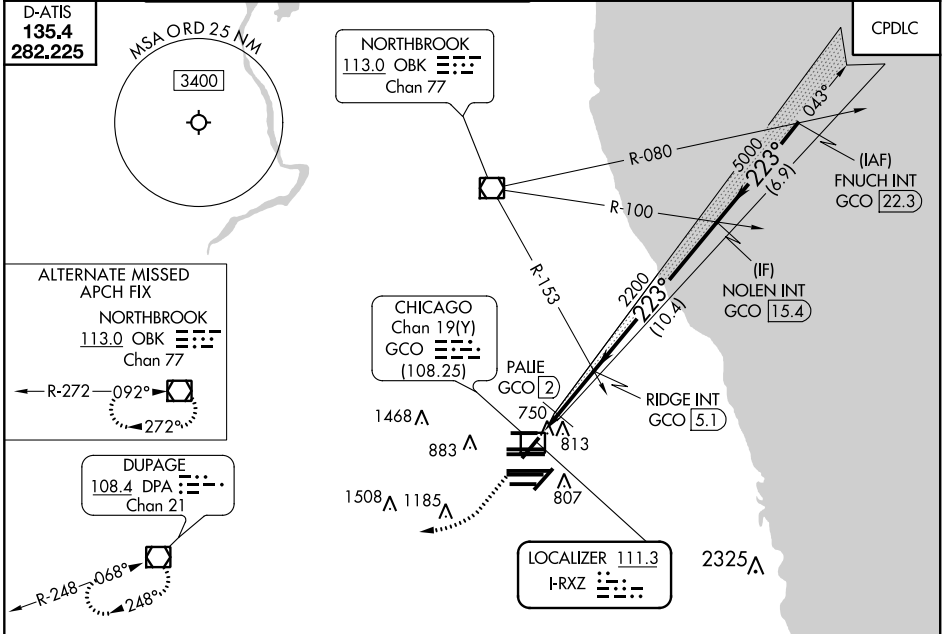
RADAR required for procedure entry.

**V** Simultaneous approach authorized.  
**A** DME from GCO DME.



MISSED APPROACH: Climb to 1300 then climbing right turn to 4000 direct DPA VOR/DME and hold.

CHICAGO APP CON	O'HARE TOWERS	GND CON (TWR NORTH)	(TWR CENTER)	CLNC DEL
<b>119.0 292.125</b>	<b>128.15 348.0</b> (Rwy 9L/27R) <b>133.0 348.0</b> (10R/28L)	<b>124.125 118.05</b> (TWR SOUTH)	<b>121.75 121.9</b> (OBND) (IBND)	<b>121.6</b>
	<b>120.75 121.15 126.9 132.7 348.0</b> (CENTER)	<b>226.675</b> (ALL TWRs)		



ELEV 680	TDZE 652	223° 4.7 NM from FAF	1300	4000	DPA	VGSI and ILS glidepath not coincident (VGSI Angle 3.00/TCH 69).
			FNUCH INT GCO 22.3 RIDGE INT GCO 5.1 NOLEN INT GCO 15.4 PALIE GCO 2 GCO 0.3 GCO 1.2 2200 5000 7000 GS 3.00° TCH 49 0.8 NM 0.8 NM 3.1 NM 10.4 NM 6.9 NM			
CATEGORY	A	B	C	D		
S-ILS 22R	852/18		200 (200-½)			
S-LOC 22R	1220/24	568 (600-½)	1220-1¼	568 (600-1¼)		
<b>C</b> CIRCLING	1220-1	540 (600-1)	1220-1½	540 (600-1½)	1460-2½	780 (800-2½)
PALIE FIX MINIMUMS						
S-LOC 22R	980/24	328 (300-½)	980/26	328 (300-½)		
<b>C</b> CIRCLING	1220-1	540 (600-1)	1220-1½	540 (600-1½)	1460-2½	780 (800-2½)

EC-3, 30 DEC 2021 to 27 JAN 2022

EC-3, 30 DEC 2021 to 27 JAN 2022