

LOC/DME I-UYJ 111.9 Chan 56	APP CRS 273°	Rwy ldg 11245 TDZE 653 Apt Elev 680
--	------------------------	--

ILS or LOC RWY 27C

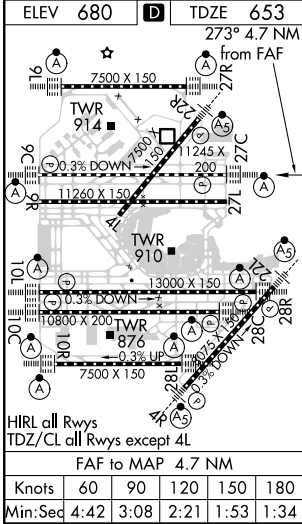
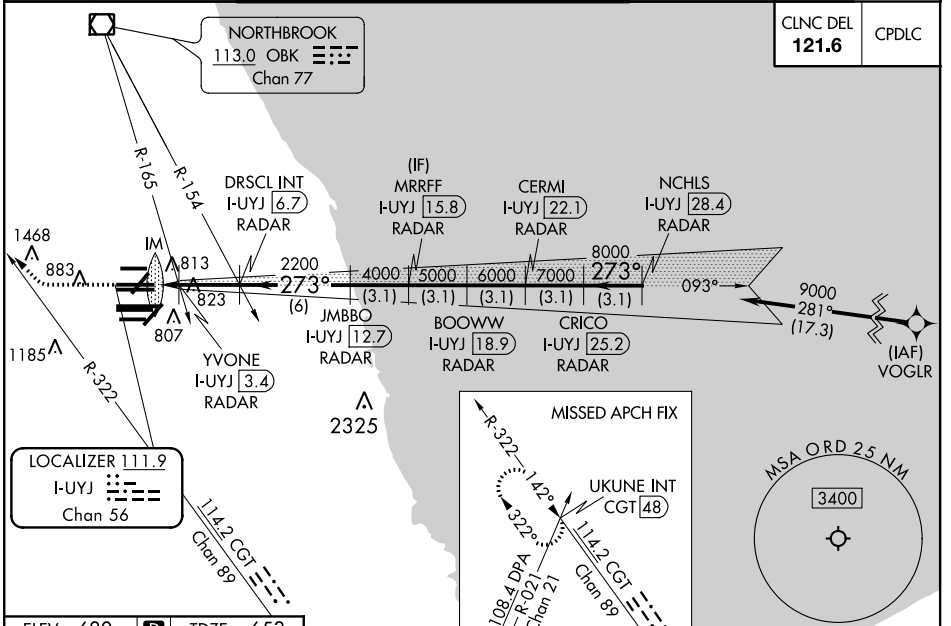
CHICAGO O'HARE INTL (ORD)

From VOGLR: RNAV 1-GPS required. Aircraft not GPS equipped - RADAR required for procedure entry. DME or RADAR required.

ALSF-2
MISSED APPROACH: Climb to 1100 then climbing right turn to 4000 on heading 290° and CGT R-322 to UKUNE INT/ CGT 48 DME and hold.

Simultaneous approach authorized. For inop ALS, increase S-LOC 27C Cat C/D visibility to 1½ SM.

D-ATIS 135.4	CHICAGO APP CON 119.0 292.125	O'HARE TOWERS 128.15 348.0 (Rwy 9L/27R) 133.0 348.0 (10R/28L) 120.75 121.15 126.9 132.7 348.0 (CENTER)	GND CON (TWR CENTER) 124.125 (TWR NORTH) 121.75 (OBND) 118.05 (TWR SOUTH) 121.9 (IBND) 226.675 (ALL TWRs)
------------------------	---	--	---



ELEV 680	TDZE 653	273° 4.7 NM from FAF	1100	4000	CGT R-322	UKUNE INT	VGSI and ILS glidepath not coincident (VGSI Angle 3.00/TCH 75).	NCHLS I-UYJ 28.4 RADAR
*LOC only.								CERMI I-UYJ 22.1 RADAR
								CRICO I-UYJ 25.2 RADAR
								JMBBO I-UYJ 12.7 RADAR
								BOOWW I-UYJ 18.9 RADAR
								MRRFF I-UYJ 15.8 RADAR
								DRSC I-UYJ 6.7 RADAR
								YVONE I-UYJ 3.4 RADAR
								IM
								I-UYJ 2
								GS 3.00° TCH 56
CATEGORY								A B C D
S-ILS 27C								853/18 200 (200-½)
S-LOC 27C								1160/24 507 (500-½) 1160/55 507 (500-1)
S-LOC 27C								1080/24 427 (400-½) 1080/40 427 (400-¾)
YVONE FIX MINIMUMS (DUAL VOR RECEIVERS or DME REQUIRED)								
FAF to MAP 4.7 NM								
Knots								60 90 120 150 180
Min:Sec								4:42 3:08 2:21 1:53 1:34

EC-3, 30 DEC 2021 to 27 JAN 2022

EC-3, 30 DEC 2021 to 27 JAN 2022