

LOC/DME I-IAC 110.5 Chan 42	APP CRS 273°	Rwy Idg 7782 TDZE 654 Apt Elev 680
---	------------------------	---

ILS or LOC RWY 27L

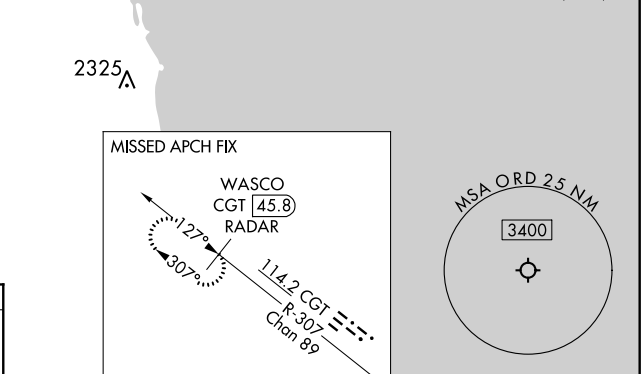
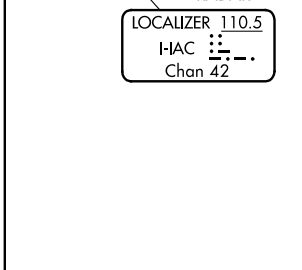
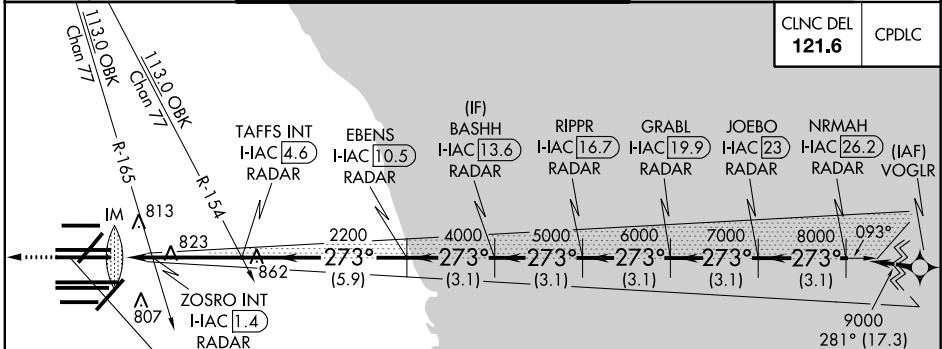
CHICAGO O'HARE INTL (ORD)

From VOGLR: RNAV 1-GPS required. Aircraft not GPS equipped - RADAR required for procedure entry. DME or RADAR required.

MISSED APPROACH: Climb to 1200 then climb to 4000 on heading 265° and on CGT VORTAC R-307 to WASCO/CGT 45.8 DME/RADAR and hold.

Simultaneous approach authorized.

D-ATIS 135.4 282.225	CHICAGO APP CON 119.0 292.125	O'HARE TOWERS 128.15 348.0 (Rwy 9L/27R) 133.0 348.0 (10R/28L) 120.75 121.15 126.9 132.7 348.0 (CENTER)	CND CON (TWR CENTER) 124.125 (TWR NORTH) 118.05 (TWR SOUTH) 226.675 (ALL TWRs)	(TWR CENTER) 121.75 (OBND) 121.9 (IBND)
--	---	--	--	---



1200	4000	CGT R-307	WASCO CGT 45.8 RADAR	VGSI and ILS glidepath not coincident.
*LOC only				
I-IAC ANTENNA	ZOSRO INT I-IAC 1.4 RADAR	TAFSS INT I-IAC 4.6 RADAR	EBENS I-IAC 10.5 RADAR	BASHH I-IAC 13.6 RADAR
I-IAC 0.1				RIPPR I-IAC 16.7 RADAR
				GRABL I-IAC 19.9 RADAR
				JOEBO I-IAC 23 RADAR
				NRMAH I-IAC 26.2 RADAR
				9000
				8000
				7000
				6000
				5000
				4000
				2200
				1160*
				273°
				GS 3.00° TCH 55
0.1	1.4	3.2 NM	-5.9 NM	3.1 NM
3.1 NM	3.1 NM	3.1 NM	3.1 NM	3.1 NM
CATEGORY	A	B	C	D
S-ILS 27L	854/18 200 (200-½)			
S-LOC 27L	1160/24	506 (500-½)	1160/55	506 (500-1)
ZOSRO FIX MINIMUMS (DUAL VOR RECEIVERS OR DME REQUIRED)				
S-LOC 27L	1080/24	426 (400-½)	1080/40	426 (400-¾)

EC-3, 30 DEC 2021 to 27 JAN 2022

EC-3, 30 DEC 2021 to 27 JAN 2022