

LOC/DME I-ABU 111.75 Chan 54 (Y)	APP CRS 273°	Rwy Idg 7500 TDZE 664 Apt Elev 680
---	------------------------	---

ILS or LOC RWY 27R

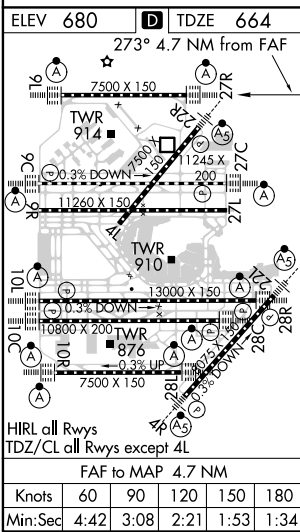
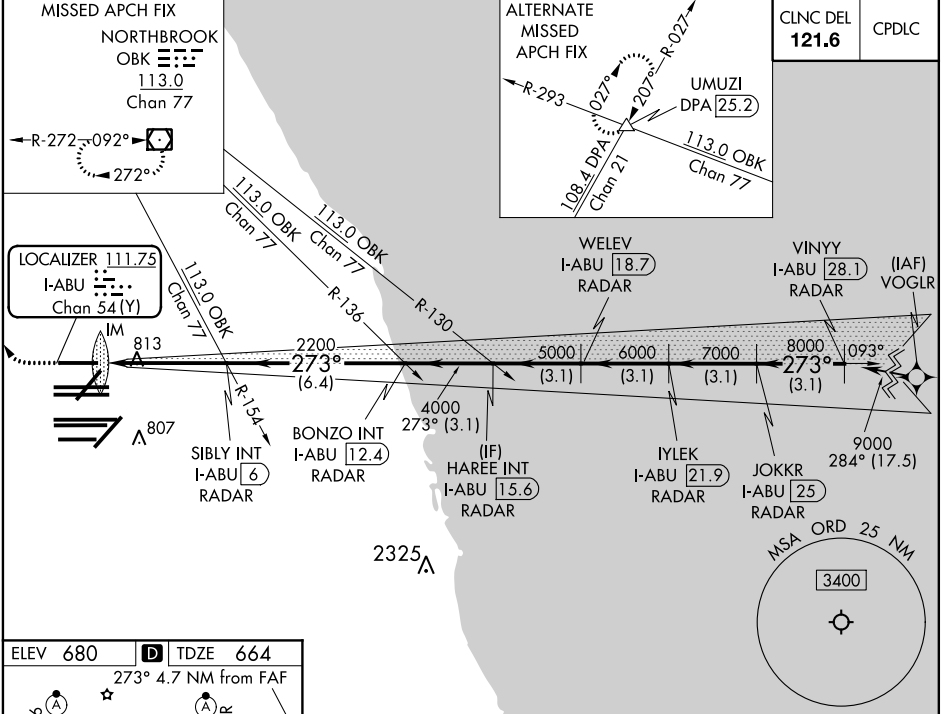
CHICAGO O'HARE INTL (ORD)

RNAV-1 GPS or RADAR required for procedure entry. RADAR or DME required. **ALSF-2**

MISSED APPROACH: Climb to 1100 then climbing right turn to 4000 direct OBK VOR/DME and hold, continue climb-in-hold to 4000.

Simultaneous approach authorized.

D-ATIS 135.4	CHICAGO APP CON 119.0 292.125	O'HARE TOWERS 128.15 348.0 (Rwy 9L/27R) 133.0 348.0 (10R/28L) 120.75 121.15 126.9 132.7 348.0 (CENTER)	GND CON (TWR NORTH) 124.125 (TWR SOUTH) 118.05 (ALL TWRs) 226.675	(TWR CENTER) 121.75 (CBND) (IBND) 121.9
------------------------	---	--	---	--



1100	4000	OBK					
*LOC only.							
I-ABU 1.4	*I-ABU 2.6	SIBLY INT I-ABU 6 RADAR	BONZO INT I-ABU 12.4 RADAR	WEEV I-ABU 18.7 RADAR	IYLEK I-ABU 21.9 RADAR	JOKKR I-ABU 25 RADAR	VINYY I-ABU 28.1 RADAR
2200	4000	5000	6000	7000	8000	9000	
0.2 NM	1.0 NM	3.4 NM	6.4 NM	3.1 NM	3.1 NM	3.1 NM	3.1 NM
CATEGORY	A		B		C		D
S-ILS 27R	864/18		200 (200-1/2)				
S-LOC 27R	1120/24		456 (500-1/2)		1120/45 456 (500-7/8)		

EC-3, 30 DEC 2021 to 27 JAN 2022

EC-3, 30 DEC 2021 to 27 JAN 2022