

LOC/DME I-TSL 111.1 Chan 48	APP CRS 273°	Rwy ldg 13000 TDZE 651 Apt Elev 680
---	------------------------	--

ILS or LOC RWY 28R

CHICAGO O'HARE INTL (ORD)

From VOGLR: RNAV 1-GPS required.
Aircraft not GPS equipped - RADAR required for procedure entry.
DME or RADAR required.

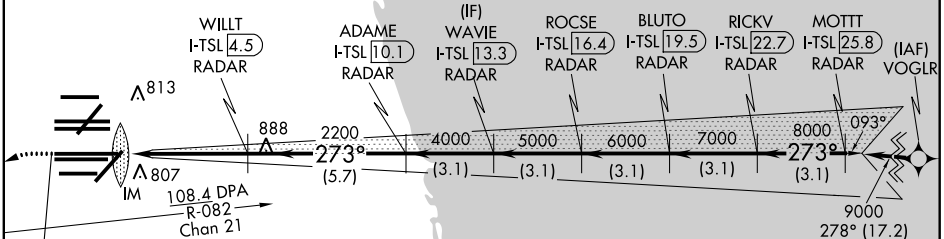


MISSED APPROACH: Climb to 1100 then climbing left turn to 4000 on heading 215° and DPA VOR/DME R-082 to DPA VOR/DME and hold.

Simultaneous approach authorized.

D-ATIS 135.4 282.225	CHICAGO APP CON 119.0 292.125	O'HARE TOWERS 128.15 348.0 (Rwy 9L/27R) 133.0 348.0 (10R/28L) 120.75 121.15 126.9 132.7 348.0 (CENTER)	GND CON (TWR CENTER) 121.75 (OBND) (TWR NORTH) 121.95 (OBND) (TWR SOUTH) 121.9 (IBND) 226.675 (ALL TWSR)
--	---	--	---

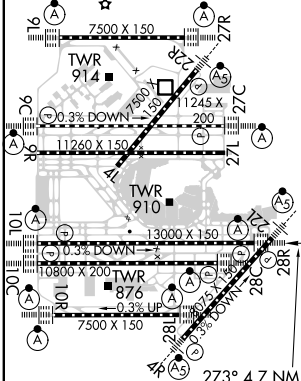
CLNC DEL 121.6	CPDLC
--------------------------	-------



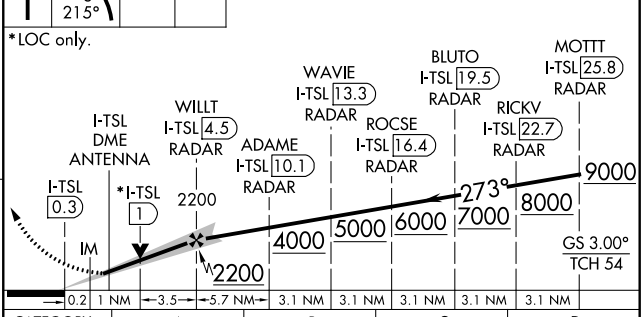
LOCALIZER 111.1
I-TSL [111.1]
Chan 48

MISSED APCH FIX DUPAGE
DPA [111.1]
108.4
Chan 21
R-248-068°
248°

ELEV 680	D	TDZE 651
-----------------	---	-----------------



1100 4000 DPA [111.1] VGSI and ILS glidepath not coincident (VGSI Angle 3.00/TCH 70).
hdg 215° R-082



HIRL all Rwy's
TDZ/CL all Rwy's except 4L
FAF to MAP 4.7 NM

Knots	60	90	120	150	180
Min:Sec	4:42	3:08	2:21	1:53	1:34

CATEGORY	A	B	C	D
S-ILS 28R	851/18 200 (200-½)			
S-LOC 28R	1120/24	469 (500-½)	1120/50	469 (500-1)

EC-3, 30 DEC 2021 to 27 JAN 2022

EC-3, 30 DEC 2021 to 27 JAN 2022