

LOC I-FJU <b>110.1</b>	APP CRS <b>045°</b>	Rwy ldg TDZE Apt Elev	<b>8075</b> <b>661</b> <b>680</b>
---------------------------	------------------------	-----------------------------	---

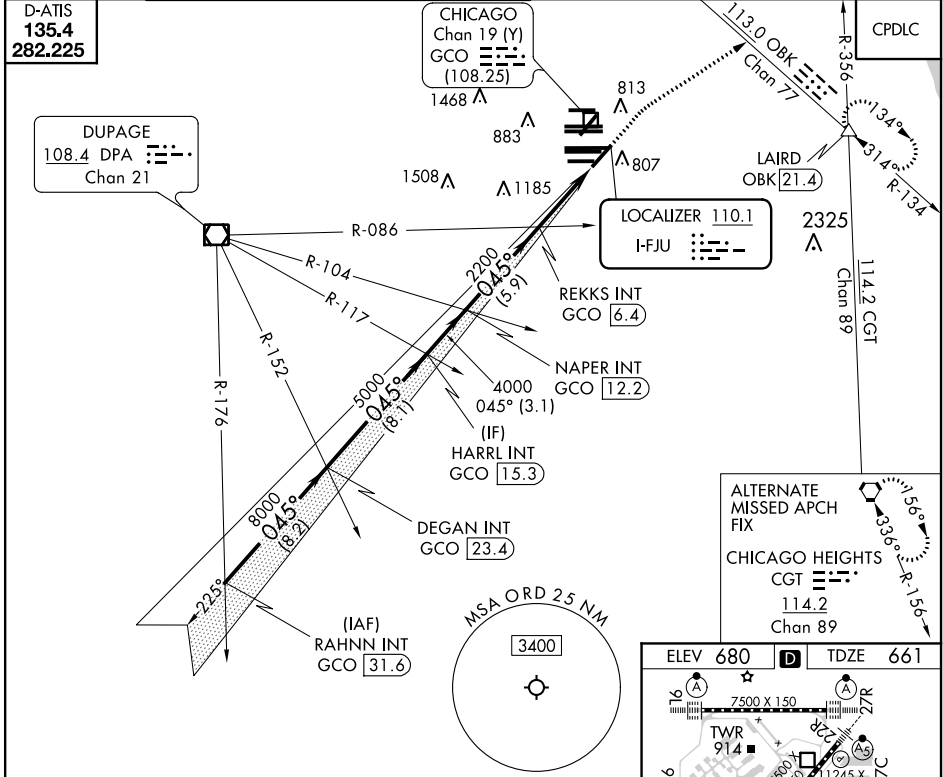
# ILS or LOC RWY 4R

CHICAGO O'HARE INTL (ORD)

RADAR required for procedure entry.		MALSR	MISSED APPROACH: Climb to 1200 then climbing right turn to 4000 on heading 060° and OBK VOR/DME R-134 to LAIRD INT/OBK 21.4 DME and hold.
Simultaneous approach authorized.			

CHICAGO APP CON <b>119.0 292.125</b>	O'HARE TOWERS <b>128.15 348.0</b> (Rwy 9L/27R) <b>133.0 348.0</b> (10R/28L) <b>348.0</b> (CENTER)	GND CON (TWR CENTER) <b>124.125</b> (TWR NORTH) <b>118.05</b> (TWR SOUTH) <b>226.675</b> (ALL TWRs)	(TWR CENTER) <b>121.75</b> (OBND) <b>121.9</b> (IBND)	CLNC DEL <b>121.6</b>
---	--	--	---	--------------------------

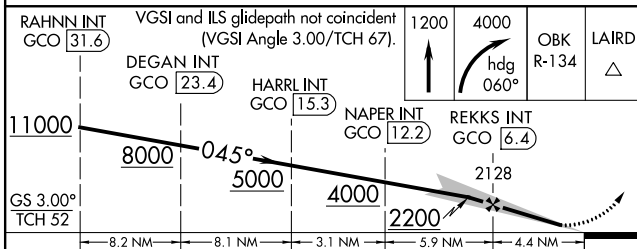
D-ATIS <b>135.4</b> <b>282.225</b>
--



**ALTERNATE MISSED APCH FIX**

CHICAGO HEIGHTS CGT **114.2**  
Chan 89

**156°**  
**336°** R-156



RAHNN INT GCO 31.6	DEGAN INT GCO 23.4	HARRL INT GCO 15.3	NAPER INT GCO 12.2	REKKS INT GCO 6.4	LAIRD INT
<p>1200 4000 OBK R-134 LAIRD</p> <p>↑ hdg 060°</p>					
GS 3.00° TCH 52	8.2 NM	8.1 NM	3.1 NM	5.9 NM	4.4 NM
CATEGORY	A	B	C	D	
S-ILS 4R	861/18		200 (200-½)		
S-LOC 4R	1160/24 499 (500-½)		1160/50 499 (500-1)		
CIRCLING	1220-1 540 (600-1)		1220-1½ 1460-2½		
			540 (600-1½) 780 (800-2½)		

ELEV 680	TDZE 661
----------	----------

HRL all Rwys  
TDZ/CL all Rwys except 4L  
FAF to MAP 4.4 NM

Knots	60	90	120	150	180
Min:Sec	4:24	2:56	2:12	1:46	1:28

EC-3, 30 DEC 2021 to 27 JAN 2022

EC-3, 30 DEC 2021 to 27 JAN 2022