

LOC/DME I-SAJ 111.75 Chan 54 (Y)	APP CRS 093°	Rwy Idg 7500 TDZE 668 Apt Elev 680
--	------------------------	--

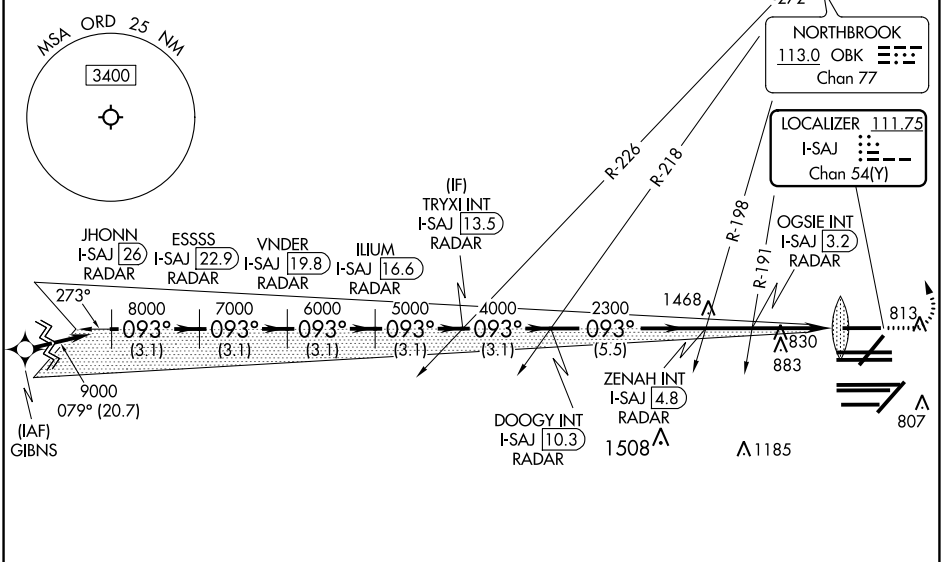
ILS or LOC RWY 9L

CHICAGO O'HARE INTL (ORD)

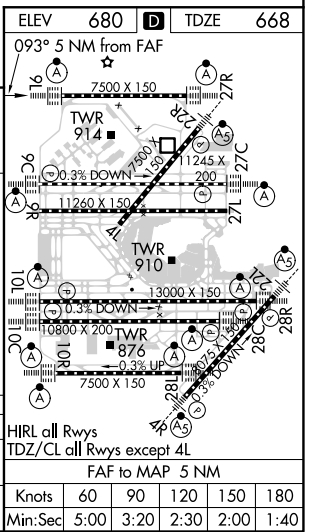
RNAV-1 GPS or RADAR required for procedure entry. RADAR or DME required.		ALSIF-2 	MISSED APPROACH: Climb to 1100 then climbing left turn to 4000 direct OBK VOR/DME and hold, continue climb-in-hold to 4000.
Simultaneous approach authorized.			
CHICAGO APP CON 119.0 292.125	O'HARE TOWERS 128.15 348.0 (Rwy 9L/27R) 133.0 348.0 (110R/28L) 124.125 (TWR NORTH) 121.75 (OBND) 118.05 (TWR SOUTH) 226.675 (ALL TWRS)	GND CON (TWR CENTER) 121.75 (OBND) 121.9 (IBND)	CLNC DEL 121.6

D-ATIS 135.4 282.225
--

CPDLC



JHONN I-SAJ 26 RADAR	ESSSS I-SAJ 22.9 RADAR	VNDER I-SAJ 19.8 RADAR	TRYXI INT I-SAJ 13.5 RADAR	ZENAH INT I-SAJ 4.8 RADAR	OGSIE INT I-SAJ 3.2 RADAR	I-SAJ DME ANTENNA IM	I-SAJ 1	I-SAJ 0.2
9000	8000	7000	6000	5000	4000	2300	*1760	
3.1 NM	3.1 NM	3.1 NM	3.1 NM	3.1 NM	5.5 NM	1.6 NM	2.2	1.1
GS 3.00° TCH 55								
CATEGORY	A		B		C		D	
S-ILS 9L	868/18		200 (200-½)					
S-LOC 9L	1100/24	432 (500-½)		1100/40		432 (500-¾)		



EC-3, 30 DEC 2021 to 27 JAN 2022

EC-3, 30 DEC 2021 to 27 JAN 2022