

LOC/DME I-BYW <b>110.9</b> Chan <b>46</b>	APP CRS <b>091°</b>	Rwy Idg <b>7500</b> TDZE <b>680</b> Apt Elev <b>680</b>
---	------------------------	---

# ILS PRM Y RWY 10R (CLOSE PARALLEL)

CHICAGO O'HARE INTL (ORD)

RNAV 1-GPS or RADAR required for procedure entry. DME or RADAR required.  
From GIBNS: RNAV-1 GPS required.

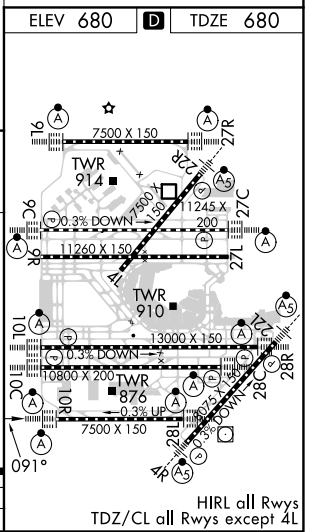
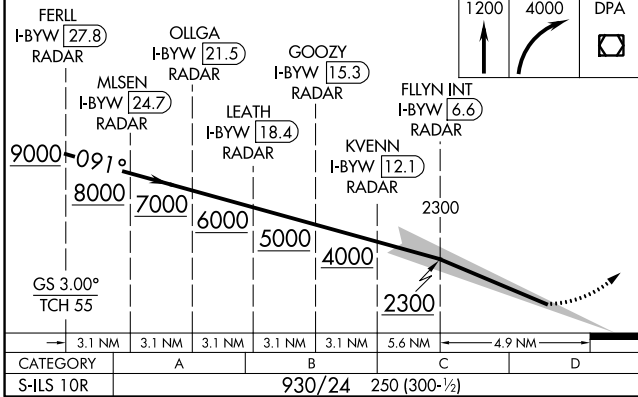
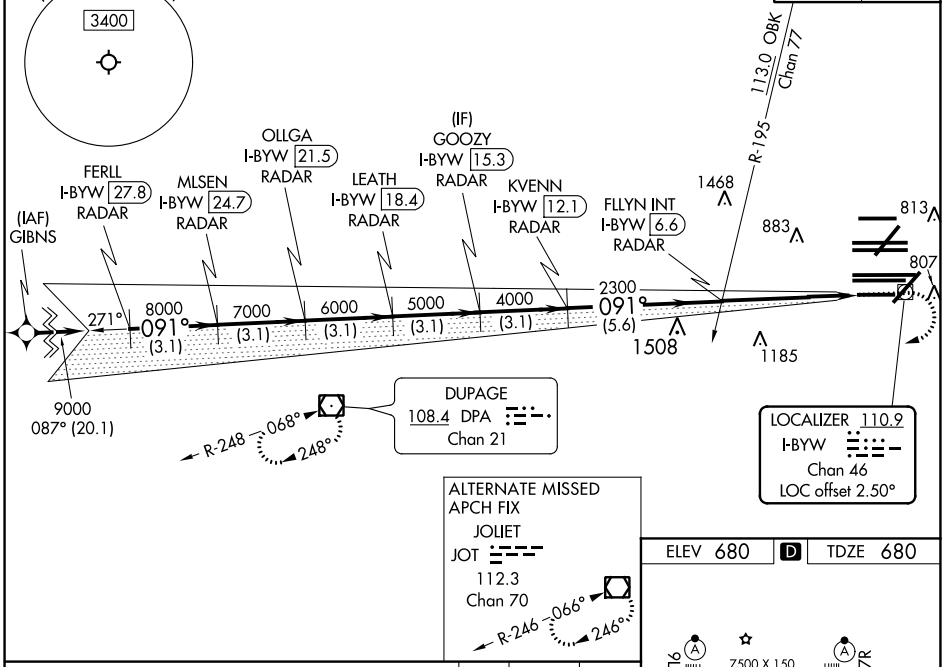
Simultaneous approach authorized. Use of FD or AP required during simultaneous operations. Dual VHF Comm required. See additional requirements on AAUP.

ALSIF-2

MISSED APPROACH: Climb to 1200 then climbing right turn to 4000 direct DPA VOR/DME and hold.

D-ATIS <b>135.4</b> <b>282.225</b>	CHICAGO APP CON <b>119.0 292.125</b>	O'HARE TOWERS <b>128.15 348.0</b> (Rwy 9L/27R) <b>133.0 348.0</b> (10R/28L) <b>120.75 121.15 126.9 132.7 348.0</b> (CENTER) <b>PRM 128.05</b>	GND CON (TWR CENTER) (TWR NORTH) (TWR SOUTH) (ALL TWSR) <b>124.125</b> <b>121.75</b> <b>118.05</b> <b>121.9</b> <b>226.675</b>
--	---	--	---

MSA ORD 25 NM 3400	CLNC DEL <b>121.6</b>	CPDLC
-----------------------	--------------------------	-------



EC-3, 30 DEC 2021 to 27 JAN 2022

EC-3, 30 DEC 2021 to 27 JAN 2022