

LOC/DME I-BYW <b>110.9</b> Chan 46	APP CRS <b>091°</b>	Rwy Idg 7500	TDZE 680	Apt Elev 680
--	------------------------	-----------------	-------------	-----------------

# ILS Y or LOC Y RWY 10R

CHICAGO O'HARE INTL (ORD)

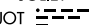
RNAV 1-GPS or RADAR required for procedure entry. DME or RADAR required.  
From GIBNS: RNAV-1 GPS required.

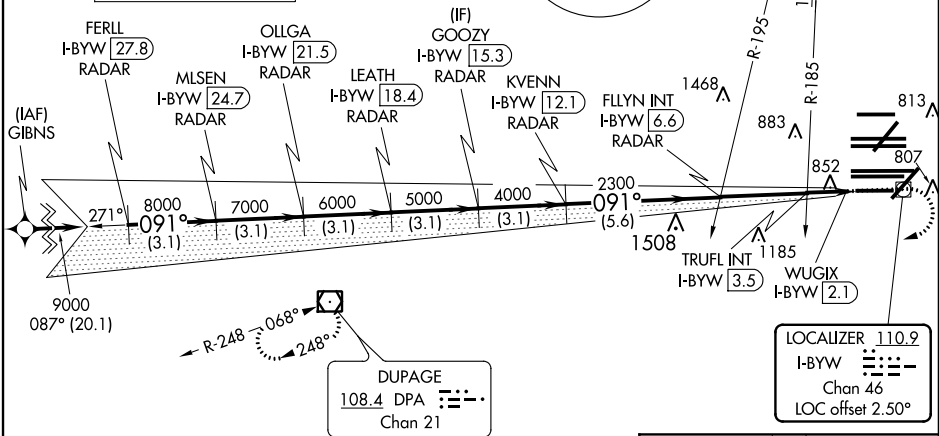
ALSF-2   
MISSED APPROACH: Climb to 1200 then climbing right turn to 4000 direct DPA VOR/DME and hold.

 Simultaneous approach authorized.

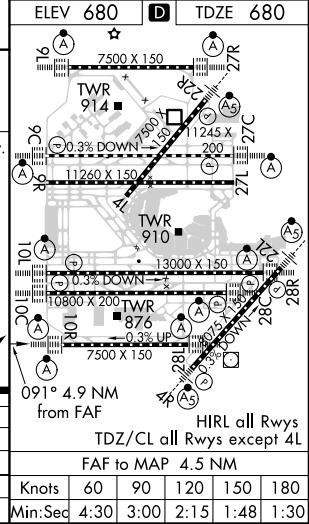
CHICAGO APP CON <b>119.0 292.125</b>	O'HARE TOWERS <b>128.15 348.0</b> (Rwy 9L/27R) <b>133.0 348.0</b> (10R/28L) <b>126.9 132.7 348.0</b> (CENTER)	GND CON (TWR CENTER) <b>124.125</b> (TWR NORTH) <b>121.75</b> (OBND) <b>118.05</b> (TWR SOUTH) <b>121.9</b> (IBND)	CLNC DEL <b>121.6</b>
---	--	--	--------------------------

D-ATIS  
**135.4**  
**282.225**

ALTERNATE MISSED APCH FIX  
JOLIET  
JOT   
112.3  
Chan 70  
R-246 066° 246°



FERLL I-BYW 27.8 RADAR	OLLGA I-BYW 21.5 RADAR	GOOZY I-BYW 15.3 RADAR	FLYIN INT I-BYW 6.6 RADAR	WUGIX I-BYW 2.1
MLSEN I-BYW 24.7 RADAR	LEATH I-BYW 18.4 RADAR	KVENN I-BYW 12.1 RADAR	TRUFL INT I-BYW 3.5	
9000 091° 8000 7000 6000 5000 4000 2300 *1220				
GS 3.00° TCH 55				
*LOC only				
1200	4000	DPA		
CATEGORY A B C D				
S-ILS 10R	930/24		250 (300-½)	
S-LOC 10R	1220/24	540 (600-½)	1220/55	540 (600-1)
TRUFL FIX MINIMUMS (DUAL VOR RECEIVERS OR DME REQUIRED)				
S-LOC 10R	1120/24	440 (500-½)	1120/40	440 (500-¾)



EC-3, 30 DEC 2021 to 27 JAN 2022

EC-3, 30 DEC 2021 to 27 JAN 2022