

LOC/DME I-ZJ 110.75 Chan 44 (Y)	APP CRS 094°	Rwy Idg TDZE Apt Elev	7500 680 680
--	------------------------	-----------------------------	---

ILS Z or LOC Z RWY 10R

CHICAGO O'HARE INTL (ORD)

RNAV 1-GPS or RADAR required for procedure entry. DME or RADAR required.

From GIBNS: RNAV-1 GPS required.

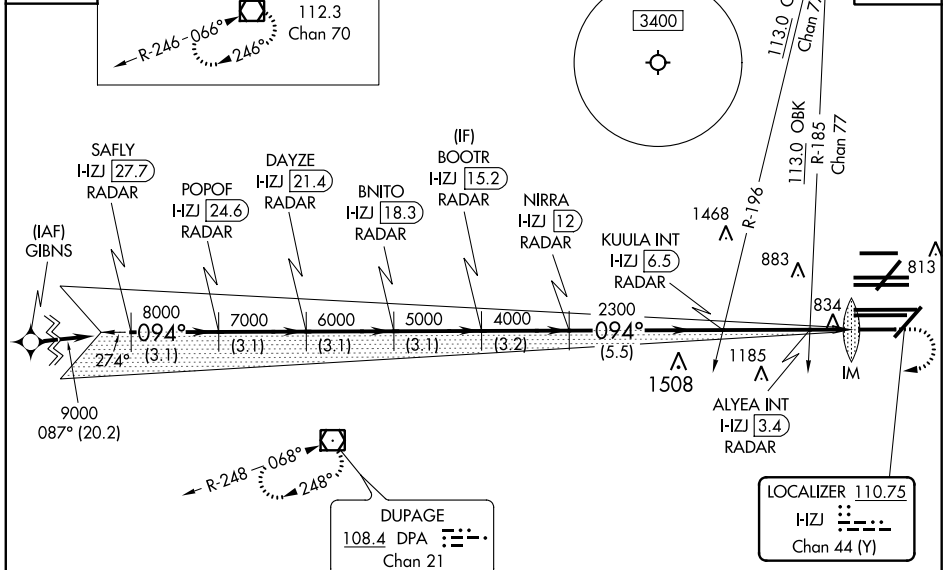
Simultaneous approach authorized.
For inop ALS, increase S-LOC 10R Cat C and D visibility to RVR 6000.



MISSED APPROACH: Climb to 1200 then climbing right turn to 4000 direct DPA VOR/DME and hold.

CHICAGO APP CON 119.0 292.125	O'HARE TOWERS 128.15 348.0 (Rwy 9L/27R) 133.0 348.0 (10R/28L) 126.9 126.9 132.7 348.0 (CENTER)	GND CON (TWR CENTER) (TWR NORTH) 121.125 (OBND) (TWR SOUTH) 121.9 (IBND) 226.675 (ALL TWRS)	CLNC DEL 121.6
---	--	---	--------------------------

D-ATIS 135.4 282.225	ALTERNATE MISSED APCH FIX	JOLIET JOT 112.3 Chan 70	CPDLC
--	---------------------------	-----------------------------------	-------



SAFLY I-ZJ [27.7] RADAR	DAYZE I-ZJ [21.4] RADAR	BOOTR I-ZJ [15.2] RADAR	KUULA INT I-ZJ [6.5] RADAR	ALYEA INT I-ZJ [3.4] RADAR	IM I-ZJ [1.6] RADAR	
POPOF I-ZJ [24.6] RADAR	BNITO I-ZJ [18.3] RADAR	NIIRRA I-ZJ [12] RADAR				
9000	8000	7000	6000	5000	4000	
GS 3.00° TCH 55					2300	
					1220	
3.1 NM	3.1 NM	3.1 NM	3.1 NM	3.2 NM	5.5 NM	
					3.1 NM	
					0.71 NM	
					0.1 NM	
CATEGORY	A		B		C	D
S-ILS 10R	880/18		200 (200-½)			
S-LOC 10R	1100/24		420 (500-½)			

