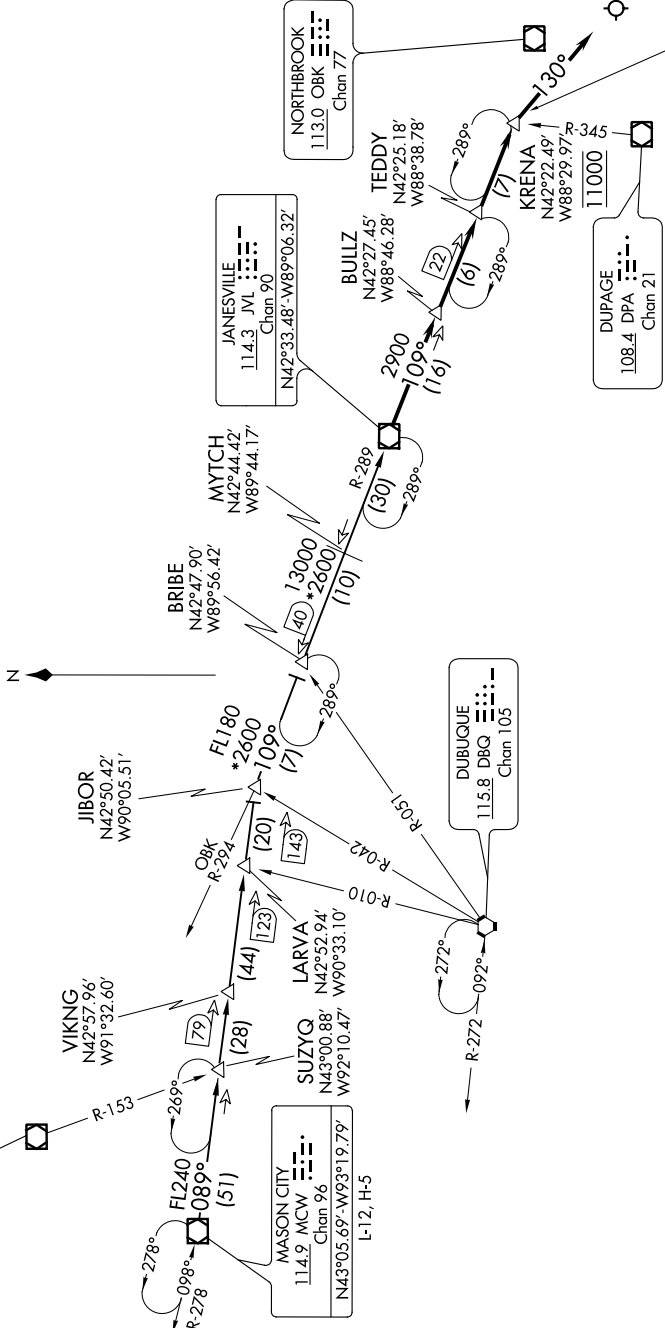


D-ATIS
135.4 282.225
CHICAGO APP CON
119.0 292.125



ARRIVAL ROUTE DESCRIPTION

MASON CITY TRANSITION (MCW.JVL1): From over MCW VOR/DME on MCW R-089 to JIBOR, then on JVL R-289 to JVL VOR/DME, thence...
from over JVL VOR/DME on JVL R-109 to cross KRENA at 11000, then on heading 130°. Expect radar vectors to final approach course.

NOTE: RADAR required.
NOTE: DME required.
NOTE: Chart not to scale.

EC-3, 30 DEC 2021 to 27 JAN 2022

EC-3, 30 DEC 2021 to 27 JAN 2022

JANESVILLE ONE ARRIVAL

(JVL.JVL1) 07OCT21

CHICAGO, ILLINOIS
CHICAGO O'HARE INTL (ORD)