

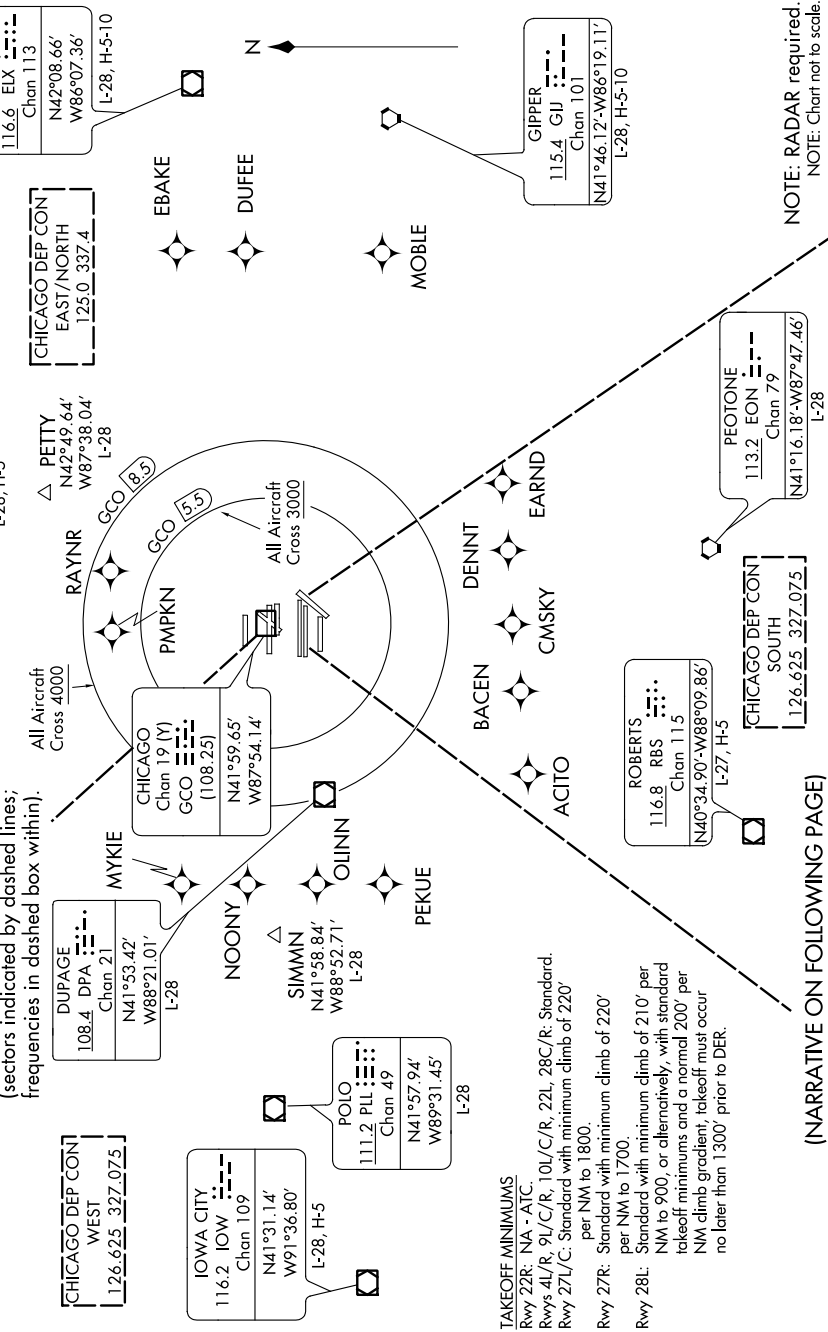
O'HARE SEVEN DEPARTURE

EC-3, 30 DEC 2021 to 27 JAN 2022

TOP ALTITUDE:
5000

SPECIAL INSTRUCTIONS: For appropriate departure control frequency, see graphic. Use frequency depicted within the sector where first navaid/fix for your route is located (sectors indicated by dashed lines; frequencies indicated in dashed box outlines).

NOTE: All turbo-jet departures in all directions, maintain 250K until advised by ATC.



(NARRATIVE ON FOLLOWING PAGE)

EC-3, 30 DEC 2021 to 27 JAN 2022

O'HARE SEVEN DEPARTURE