

WAAS CH <b>48904</b> <b>W10A</b>	APP CRS <b>093°</b>	Rwy Idg <b>12246</b> TDZE <b>672</b> Apt Elev <b>680</b>
--	------------------------	--

# RNAV (GPS) RWY 10L

CHICAGO O'HARE INTL (ORD)

RADAR required for procedure entry. RNP APCH.

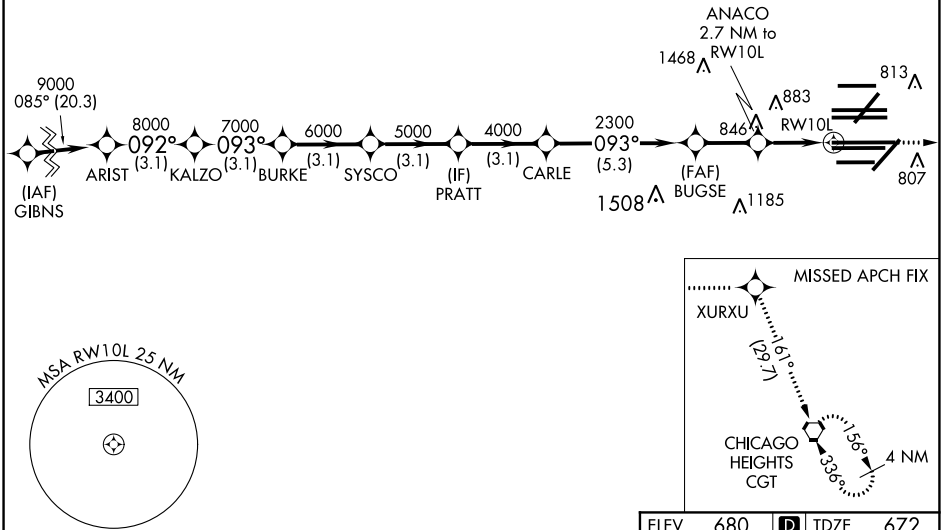
▼ For uncompensated Baro-VNAV systems, LNAV/VNAV NA below -19°C or above 54°C. Simultaneous approach authorized. LNAV procedure NA during simultaneous operations. Use of FD or AP providing RNAV track guidance required during simultaneous operations.



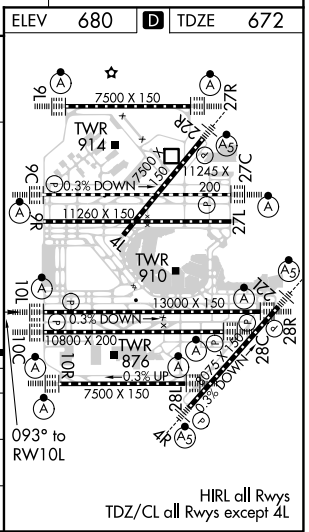
MISSED APPROACH: Climb to 4000 direct XURXU and on track 161° to CGT VORTAC and hold.

D-ATIS <b>135.4</b> <b>282.225</b>	CHICAGO APP CON <b>119.0 292.125</b>	O'HARE TOWERS <b>128.15 348.0</b> (Rwy 9L/27R) <b>133.0 348.0</b> (10R/28L) <b>120.75 121.15 126.9 132.7 348.0</b> (CENTER)				GND CON (TWR NORTH) <b>124.125</b> (TWR SOUTH) <b>118.05</b> (ALL TWRs) <b>226.675</b>	(TWR CENTER) <b>121.75</b> (OBND) (TWR SOUTH) <b>121.9</b> (IBND)
--	---	--	--	--	--	---	--

CLNC DEL <b>121.6</b>	CPDLC
--------------------------	-------



VGSIs and RNAV glidepath not coincident (VGSIs Angle 3.00/TCH 74).		4000	XURXU	tr 161°	CGT
ARIST	KALZO	BURKE	SYSCO	PRATT	ANACO 2.7 NM to RWY 10L
9000	8000	7000	6000	5000	4000
GP 3.00° TCH 56					2300 *1580
	3.1 NM	3.1 NM	3.1 NM	3.1 NM	5.3 NM
	A	B	C	D	
LPV DA	872/18		200 (200-½)		
LNAV/VNAV DA	1062/35		390 (400-¾)		
LNAV MDA	1120/24	448 (500-½)	1120/45	448 (500-¾)	



EC-3, 30 DEC 2021 to 27 JAN 2022

EC-3, 30 DEC 2021 to 27 JAN 2022