


WAAS CH 50228 W22B	APP CRS 225°	Rwy Idg TDZE Apt Elev	8075 654 680
--	------------------------	-----------------------------	---

RNAV (GPS) RWY 22L

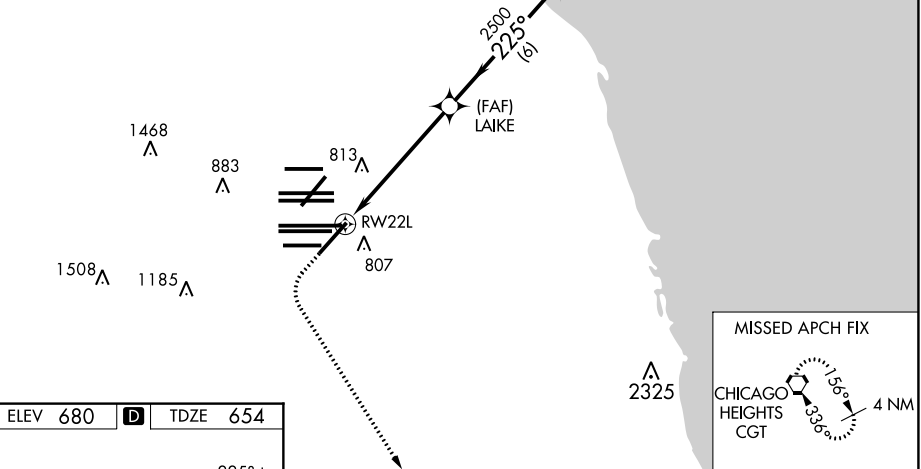
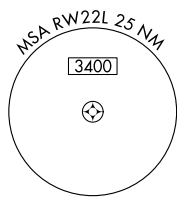
CHICAGO O'HARE INTL (ORD)

⚠ For uncompensated Baro-VNAV systems, LNAV/VNAV NA below -19°C (-2°F) or above 54°C (130°F). Simultaneous approach authorized with Rwy 22R. DME/DME RNP-0.3 NA. LNAV procedure NA during simultaneous operations. Use of FD or AP providing RNAV track guidance required during simultaneous operations.

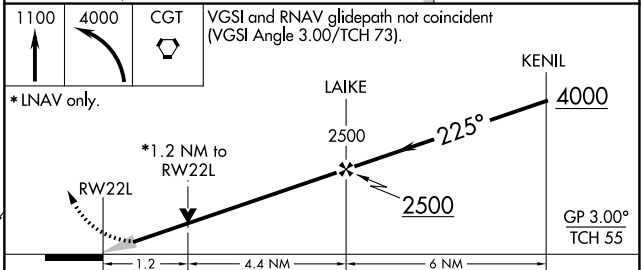
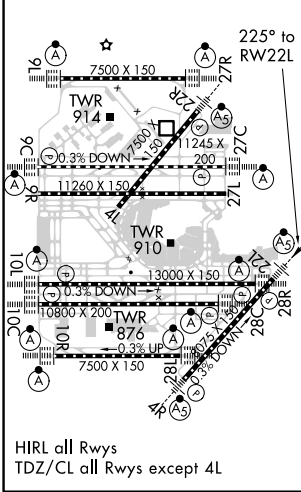
MALSR  MISSED APPROACH: Climb to 1100 then climbing left turn to 4000 direct CGT VORTAC and hold.

D-ATIS 135.4	CHICAGO APP CON 119.0 292.125	O'HARE TOWERS 128.15 348.0 (Rwy 9L/27R) 133.0 348.0 (10R/28L) 120.75 121.15 126.9 132.7 348.0 (CENTER)	GND CON (TWR CENTER) 124.125 (TWR NORTH) 121.75 (OBND) 118.05 (TWR SOUTH) 121.9 (IBND) 226.675 (ALL TWRS)
------------------------	---	--	---

CLNC DEL 121.6	CPDLC
--------------------------	-------



ELEV 680	D	TDZE 654
-----------------	----------	-----------------



CATEGORY	A	B	C	D
LPV DA	854/18		200 (200-½)	
LNAV/VNAV DA	1066/45		412 (400-¾)	
LNAV MDA	1120/24	466 (500-½)	1120/50	466 (500-1)
C CIRCLING	1220-1	540 (600-1)	1220-1½ 540 (600-1½)	1460-2½ 780 (800-2½)

EC-3, 30 DEC 2021 to 27 JAN 2022

EC-3, 30 DEC 2021 to 27 JAN 2022