


WAAS CH 42804 W28A	APP CRS 273°	Rwy Idg 13000 TDZE 651 Apt Elev 680
--	------------------------	--

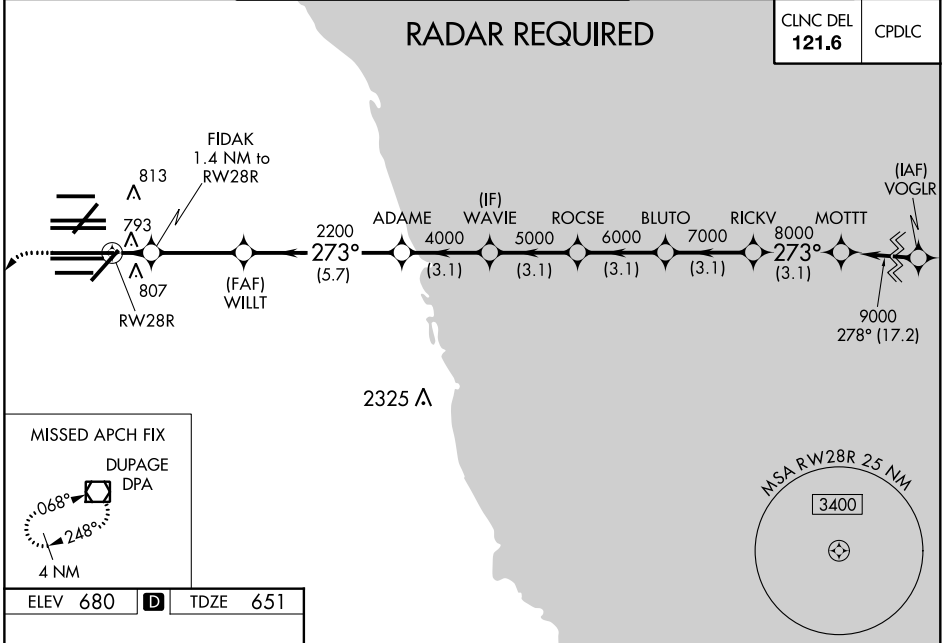
RNAV (GPS) RWY 28R

CHICAGO O'HARE INTL (ORD)

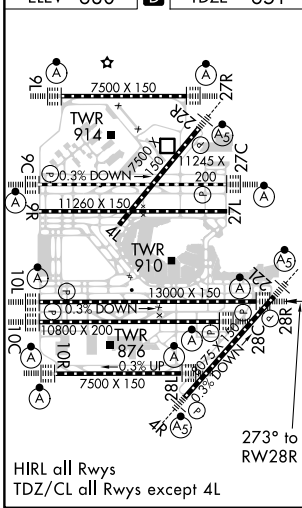
▼ For uncompensated Baro-VNAV systems, LNAV/VNAV NA below -19°C (-2°F) or above 54°C (130°F). Simultaneous approach authorized. DME/DME RNP-0.3 NA. For inop ALSF-2, increase LNAV/VNAV all Cats visibility to 1½ mile and LNAV Cats C/D visibility to RVR 6000. LNAV procedure NA during simultaneous operations. Use of FD or AP providing RNAV track guidance required during simultaneous operations.

ALSF-2

 MISSED APPROACH: Climb to 1200 then climbing left turn to 4000 direct DPA VOR/DME and hold.

D-ATIS 135.4	CHICAGO APP CON 119.0 292.125	O'HARE TOWERS 128.15 348.0 (Rwy 9L/27R) 133.0 348.0 (10R/28L) 120.75 121.15 126.9 132.7 348.0 (CENTER)	GND CON (TWR CENTER) 124.125 (TWR NORTH) 121.75 (OBND) 118.05 (TWR SOUTH) 121.9 (IBND) 226.675 (ALL TWRs)
------------------------	---	--	---



ELEV 680 TDZE 651



1200	4000	DPA	VGSI and RNAV glidepath not coincident (VGSI Angle 3.00°/TCH 70).			
*LNAV only.						
1.4	3.3 NM	5.7 NM	3.1 NM	3.1 NM	3.1 NM	3.1 NM
CATEGORY	A	B	C	D		
LPV DA	851/18		200 (200-½)			
LNAV/VNAV DA	1041/45		390 (400-¾)			
LNAV MDA	1060/24		409 (400-½)		1060/40 409 (400-¾)	

EC-3, 30 DEC 2021 to 27 JAN 2022

EC-3, 30 DEC 2021 to 27 JAN 2022