

RNAV (GPS) PRM Y RWY 10R

(CLOSE PARALLEL)

CHICAGO O'HARE INTL (ORD)

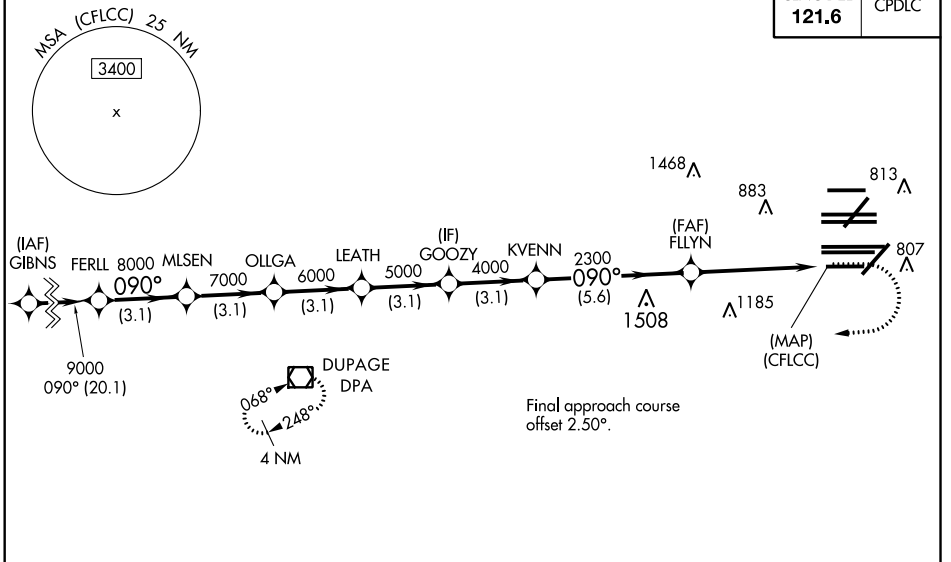
WAAS CH 77937 W10D	APP CRS 090°	Rwy Idg TDZE Apt Elev	7500 680 680
--	------------------------	-----------------------------	---

RNP APCH.
 Simultaneous approach authorized. Dual VHF comm required. See additional requirements on AAUP. For uncompensated Baro-VNAV systems, LNAV/VNAV NA below -19°C or above 54°C. Use of FD or AP providing RNAV track guidance required during simultaneous operations. For inop ALS, increase LNAV/VNAV all Cats visibility to 1 $\frac{1}{2}$ SM.

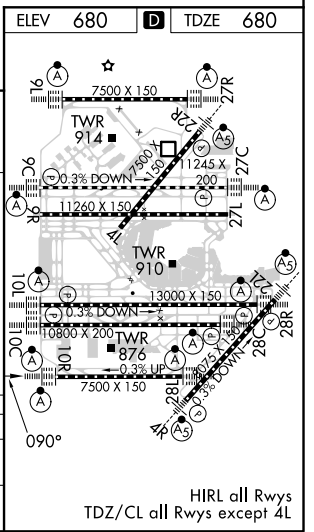
ALS-2
 MISSED APPROACH: Climb to 1200 then climbing right turn to 4000 direct DPA VOR/DME and hold.

D-ATIS 135.4 282.225	CHICAGO APP CON 119.0 292.125	O'HARE TOWERS 128.15 348.0 (Rwy 9L/27R) 133.0 348.0 (10R/28L) 120.75 121.15 126.9 132.7 348.0 (CENTER) PRM 128.05	GND CON (TWR CENTER) 124.125 (TWR NORTH) 121.75 (OBND) (TWR SOUTH) 121.9 (IBND) 226.675 (ALL TWRS)
--	---	--	--

CLNC DEL 121.6	CPDLC
--------------------------	-------



	FERLL	MLSEN	OLLGA	LEATH	GOOZY	KVENN	FFLYN	(CFLLC)
	9000	8000	7000	6000	5000	4000	2300	
GP 3.00 TCH 55								
	3.1 NM	3.1 NM	3.1 NM	3.1 NM	3.1 NM	5.6 NM	4.9 NM	
CATEGORY	A		B		C		D	
LPV DA			930/24		250 (300- $\frac{1}{2}$)			
LNAV/VNAV DA			1157/50		477 (500-1)			



RNAV (GPS) PRM Y RWY 10R (CLOSE PARALLEL)

EC-3, 30 DEC 2021 to 27 JAN 2022

EC-3, 30 DEC 2021 to 27 JAN 2022