

APP CRS 273°	Rwy Idg 7782
	TDZE 654
	Apt Elev 680

RNAV (RNP) Y RWY 27L

CHICAGO O'HARE INTL (ORD)

RNP AR APCH - GPS.

Simultaneous approach authorized. Simultaneous operations require use of vertical guidance; maintain last assigned altitude until established on glidepath. For uncompensated Baro-VNAV systems, procedure NA below -19°C or above 54°C.

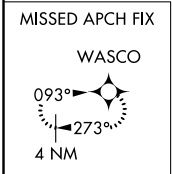
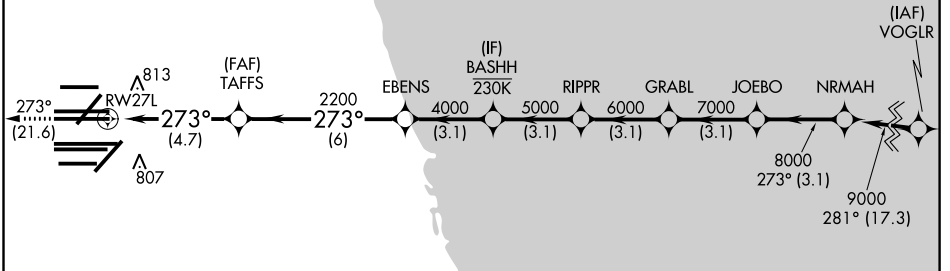
ALSF-2

MISSED APPROACH:
Climb to 4000 on track 273° to WASCO and hold.

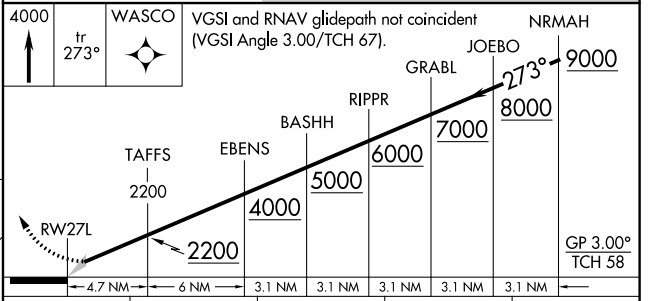
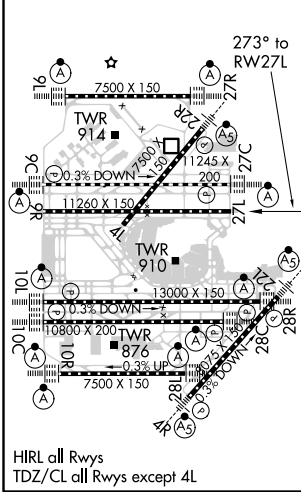
D-ATIS 135.4	CHICAGO APP CON 119.0 292.125	O'HARE TOWERS 128.15 348.0 (Rwy 9L/27R) 133.0 348.0 (10R/28L)	GND CON (TWR NORTH) 124.125	(TWR CENTER) 121.75 (OBND)
282.225		120.75 121.15 126.9 132.7 348.0 (CENTER)	118.05 (TWR SOUTH)	121.9 (IBND)
			226.675 (ALL TWS)	

RADAR REQUIRED

CLNC DEL 121.6	CPDLC
--------------------------	-------



ELEV 680	D	TDZE 654
-----------------	----------	-----------------



CATEGORY	A	B	C	D
RNP 0.15 DA		989/26	335 (400-½)	
RNP 0.30 DA		1133/50	479 (500-1)	

AUTHORIZATION REQUIRED

EC-3, 30 DEC 2021 to 27 JAN 2022

EC-3, 30 DEC 2021 to 27 JAN 2022