

RNAV (GPS) Y RWY 10R

CHICAGO O'HARE INTL (ORD)

WAAS CH 77937 W10D	APP CRS 090°	Rwy Idg TDZE Apt Elev	7500 680 680
--	------------------------	-----------------------------	---

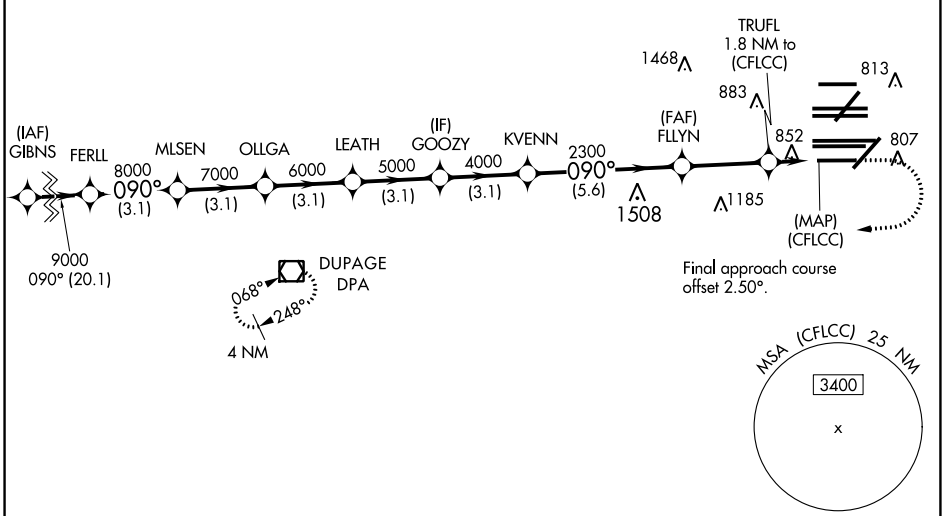
RNP APCH.

Simultaneous approach authorized. For uncompensated Baro-VNAV systems, LNAV/VNAV NA below -19°C or above 54°C.
 LNAV procedure NA during simultaneous operations.
 Use of FD or AP providing RNAV track guidance required during simultaneous operations.
 For inop ALS, increase LNAV/VNAV all Cats visibility to 1/2 SM.

ALS-F-2 	MISSED APPROACH: Climb to 1200 then climbing right turn to 4000 direct DPA VOR/DME and hold.
-------------	--

D-ATIS 135.4 282.225	CHICAGO APP CON 119.0 292.125	O'HARE TOWERS 128.15 348.0 (Rwy 9L/27R) 133.0 348.0 (10R/28L) 120.75 121.15 126.9 132.7 348.0 (CENTER)	GND CON (TWR NORTH) 124.125 118.05 (TWR SOUTH) 226.675 (ALL TWRs)	(TWR CENTER) 121.75 (OBND) 121.9 (IBND)
--	---	--	---	---

CLNC DEL 121.6	CPDLC
--------------------------	-------



ELEV 680	TDZE 680			
1200	4000	DPA		
*LNAV only.				
CATEGORY	A	B	C	D
LPV DA	930/24		250 (300-1/2)	
LNAV/VNAV DA	1157/50		477 (500-1)	
LNAV MDA	1120/24		440 (500-1/2)	
		1120/40		440 (500-3/4)

HIRL all Rwys
TDZ/CL all Rwys except 4L

EC-3, 30 DEC 2021 to 27 JAN 2022

EC-3, 30 DEC 2021 to 27 JAN 2022