

WAAS CH <b>99340</b> <b>W10E</b>	APP CRS <b>093°</b>	Rwy Idg TDZE Apt Elev	<b>7500</b> <b>680</b> <b>680</b>
--	------------------------	-----------------------------	---

# RNAV (GPS) Z RWY 10R

CHICAGO O'HARE INTL (ORD)

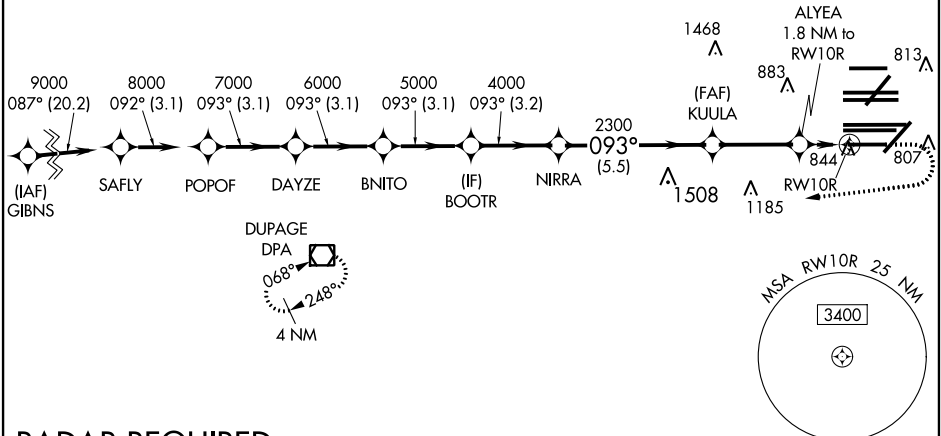
▼ For uncompensated Baro-VNAV systems, LNAV/VNAV NA below -19°C (-2°F) or above 54°C (130°F). Simultaneous approach authorized. Use of FD or AP providing RNAV track guidance required during simultaneous operations. LNAV procedure NA during simultaneous operations. DME/DME RNP-0.3 NA. For inop ALS, increase LNAV Cat C and D visibility to RVR 6000.



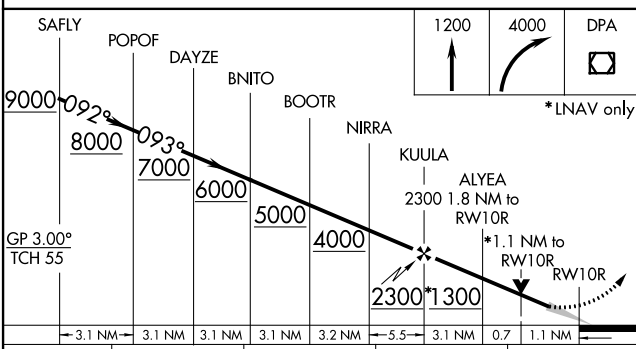
MISSED APPROACH: Climb to 1200 then climbing right turn to 4000 direct DPA VOR/DME and hold.

D-ATIS <b>135.4</b> <b>282.225</b>	CHICAGO APP CON <b>119.0 292.125</b>	O'HARE TOWERS (Rwy 9L/27R) <b>133.0 348.0</b> (10R/28L) <b>120.75 121.15 126.9 132.7 348.0</b> (CENTER)	GND CON (TWR NORTH) <b>124.125</b> (TWR SOUTH) <b>118.05</b> (ALL TWRs) <b>226.675</b>	(TWR CENTER) <b>121.75</b> (RBDN) <b>121.9</b>
--	--	--	--	---

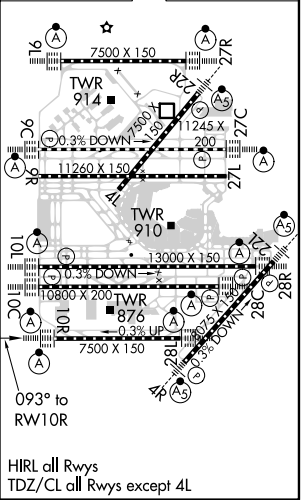
CLNC DEL <b>121.6</b>	CPDLC
--------------------------	-------



## RADAR REQUIRED



ELEV 680	<b>D</b> TDZE 680
----------	-------------------



CATEGORY	A	B	C	D
LPV DA		881/18	201 (300-½)	
LNAV/VNAV DA		1122/50	442 (500-1)	
LNAV MDA	1100/24	420 (500-½)	1100/40	420 (500-¾)

EC-3, 30 DEC 2021 to 27 JAN 2022

EC-3, 30 DEC 2021 to 27 JAN 2022