

WAAS CH <b>65837</b> <b>W28D</b>	APP CRS <b>273°</b>	Rwy Idg TDZE Apt Elev	<b>7500</b> <b>667</b> <b>680</b>
--	------------------------	-----------------------------	---

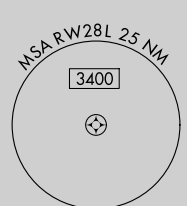
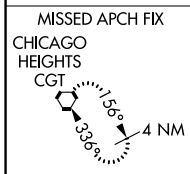
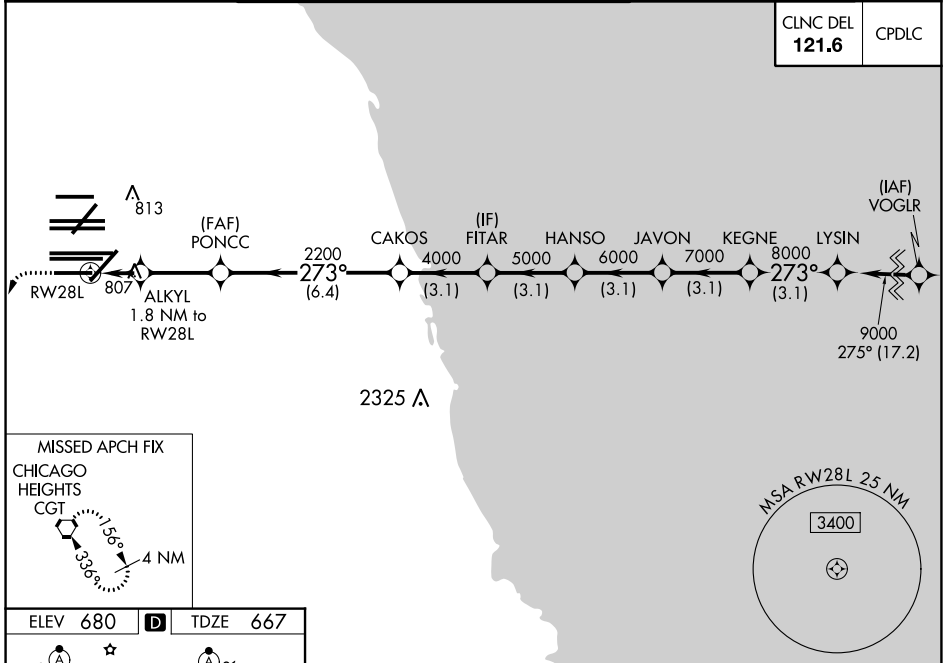
# RNAV (GPS) Z RWY 28L

CHICAGO O'HARE INTL (ORD)

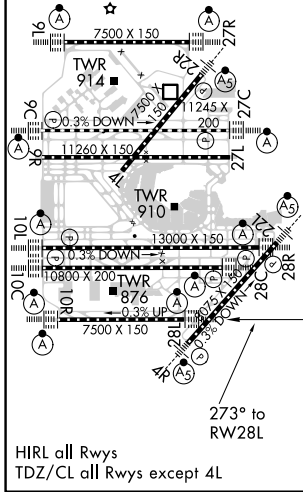
RNP APCH.	ALSF-2	MISSED APPROACH: Climb 1200 then climbing left turn to 4000 direct CGT VORTAC and hold.
⚠ Simultaneous approach authorized. LNAV procedure NA during simultaneous operations. For uncompensated Baro-VNAV systems, LNAV/VNAV NA below -19C or above 54C. Use of FD or AP required during simultaneous operations.		

D-ATIS <b>135.4</b>	CHICAGO APP CON <b>119.0 292.125</b>	O'HARE TOWERS <b>128.15 348.0</b> (Rwy 9L/27R) <b>133.0 348.0</b> (10R/28L) <b>120.75 121.15 126.9 132.7 348.0</b> (CENTER)	GND CON (TWR NORTH) <b>124.125</b> (TWR SOUTH) <b>118.05</b> (ALL TWRs) <b>226.675</b>	(TWR CENTER) <b>121.75</b> (OBND) (IBND) <b>121.9</b>
------------------------	--	--	---	---

CLNC DEL <b>121.6</b>	CPDLC
--------------------------	-------



ELEV 680	<b>D</b>	TDZE 667
----------	----------	----------



1200	4000	CGT							
*LNAV only.									
ALKYL	PONCC	CAKOS	FITAR	HANSO	JAVON	KEGNE	LYSIN		
1.8 NM to RWY 28L	2200	4000	5000	6000	7000	8000	9000		
*1.1 NM to RWY 28L	*1280	2200							
1.1 NM	0.7	2.9 NM	6.4 NM	3.1 NM	3.1 NM	3.1 NM	3.1 NM	3.1 NM	—
CATEGORY	A		B		C		D		
LPV	DA		867/18		200 (200-1/2)				
LNAV/VNAV	DA		1090/40		423 (500-3/4)				
LNAV	MDA		1060/24		393 (400-1/2)		1060/35		393 (400-5/8)

EC-3, 30 DEC 2021 to 27 JAN 2022

EC-3, 30 DEC 2021 to 27 JAN 2022