

WYNDE TWO ARRIVAL (RNAV) Arrival Routes

EC-3, 30 DEC 2021 to 27 JAN 2022

ARRIVAL ROUTE DESCRIPTION

From WYNDE on track 253° to FIYER, then on track 253° to ERNINNY, then on track 221° to PAPP1, then on track 221° to TUBEZ.

LANDING RWYS 4L/R, 9L/C/R, 22L/R, 27L/C/R, 28L/C/R:

From TUBEZ on track 221° to VULCN, then on track 273° to KURKK, then on track 273° to BAMB, then on track 273°. Expect RADAR vectors to final approach course.

LANDING RWY 10L/C/R: From TUBEZ on track 197° to MONKZ, then on track 273° to JORJO, then on track 270° to POSSM, then on track 270°. Expect RADAR vectors to final approach course.

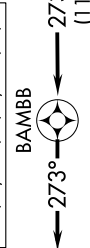
NOTE: RADAR required.

NOTE: RNAV 1.

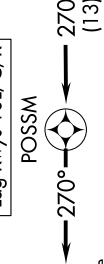
NOTE: DME/DME/IRU or GPS required.

NOTE: ORD Landing West: Expect RADAR vectors to final approach course after PAPP1.

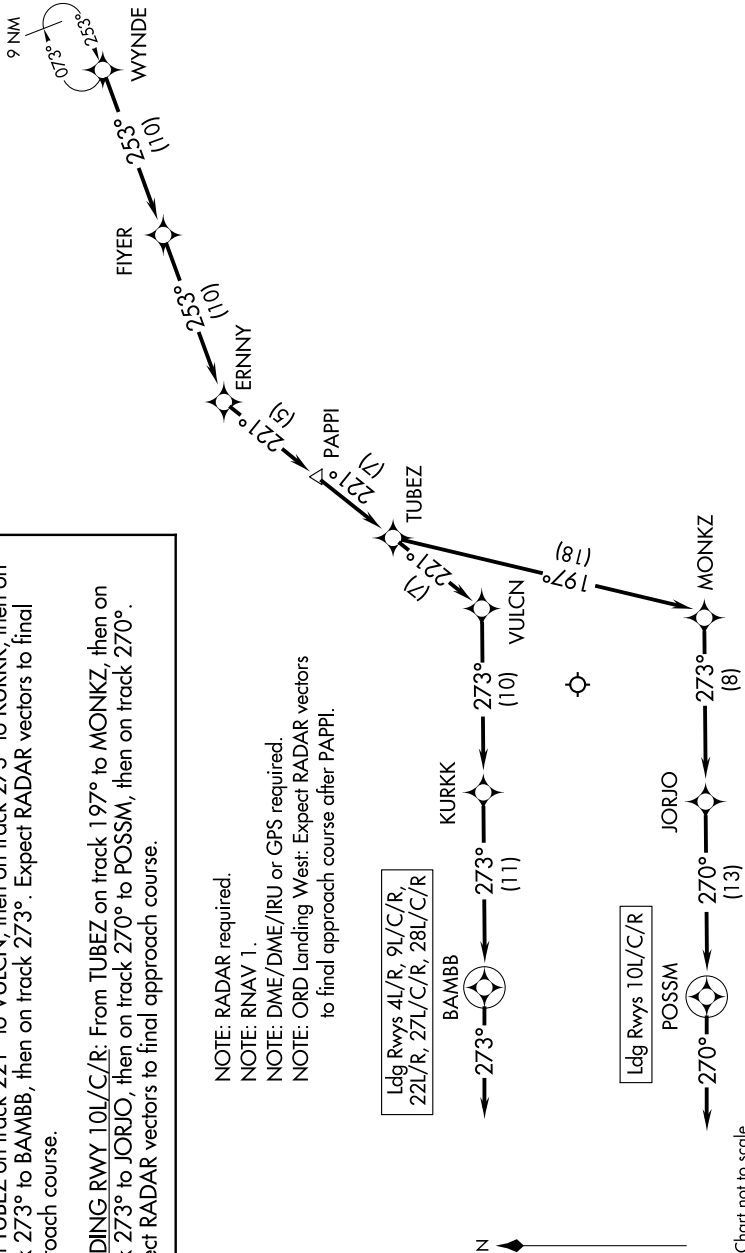
Ldg Rwy 4L/R, 9L/C/R,
22L/R, 27L/C/R, 28L/C/R



Ldg Rwy 10L/C/R



CHICAGO APP CON
119.0 292.125
D-AIS
135.4 282.225



NOTE: Chart not to scale.

EC-3, 30 DEC 2021 to 27 JAN 2022