

APP CRS <b>224°</b>	Rwy Idg <b>8000</b>
	TDZE <b>938</b>
	Apt Elev <b>956</b>

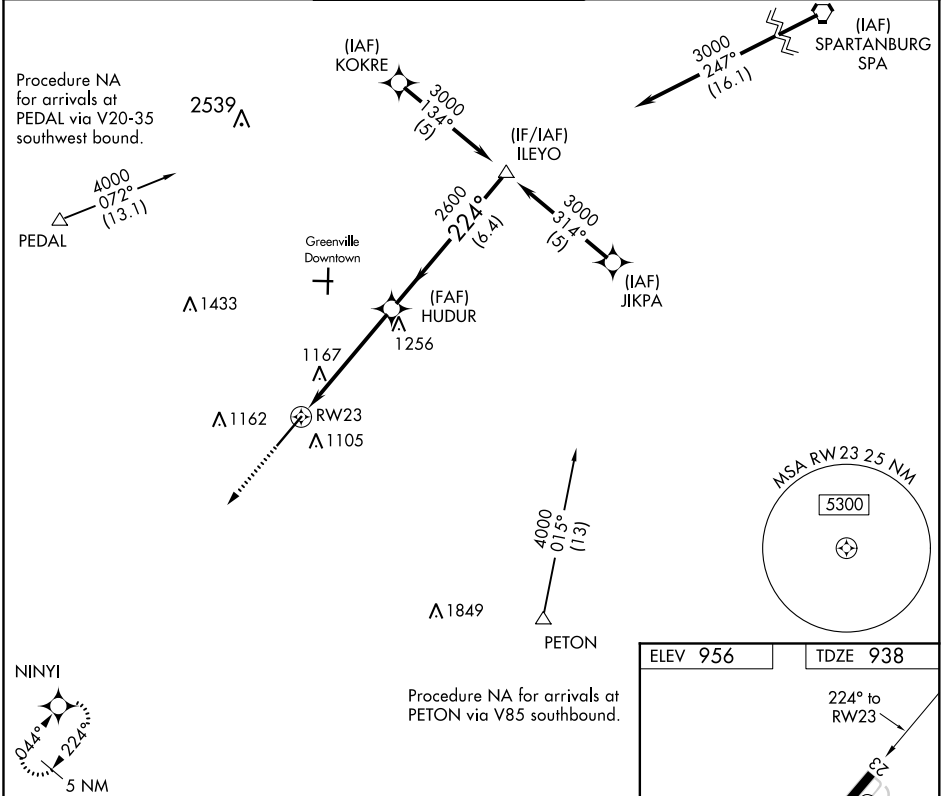
# RNAV (GPS) RWY 23

DONALDSON FLD (GYH)

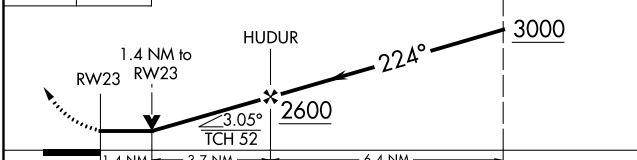
**▼** If local altimeter setting not received, use Greer altimeter setting and increase all MDA's 40 feet. VDP NA when using Greer altimeter setting. Helicopter visibility reduction below 3/4 statute mile NA. DME/DME RNP-0.3 NA.

**▲ NA** MISSED APPROACH: Climb to 3000 direct NINYI and hold.

AWOS-3 <b>127.325</b>	GREER APP CON ★ <b>118.8 270.275</b>	DONALDSON TOWER ★ <b>133.325 (CTAF) 0 269.25</b>	GND CON <b>121.4</b>	CLNC DEL <b>121.4</b>	UNICOM <b>122.7</b>
--------------------------	---	---	-------------------------	--------------------------	------------------------



3000 NINYI VGSi and descent angles not coincident (VGSi Angle 4.14/TCH 95). Procedure Turn NA



ELEV 956	TDZE 938
----------	----------

224° to RW23

0.3% DOWN, 0.6% UP

8000 A 15B

TWR 1038 ±

HIRL RWY 5-23

CATEGORY	A	B	C	D
RNAV MDA	1420-1	482 (500-1)	1420-1 1/4 482 (500-1 1/4)	1420-1 1/2 482 (500-1 1/2)
CIRCLING	1420-1 464 (500-1)	1480-1 524 (600-1)	1480-1 1/2 524 (600-1 1/2)	1540-2 584 (600-2)

SE-2, 30 DEC 2021 to 27 JAN 2022

SE-2, 30 DEC 2021 to 27 JAN 2022